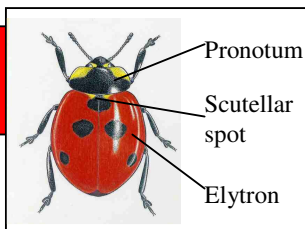


Colour guide to Cumbrian ladybirds

Tullie House Museum, Castle Street, Carlisle CA3 8TP. © 2004

Images are not to scale



Wings red/orange with black spots

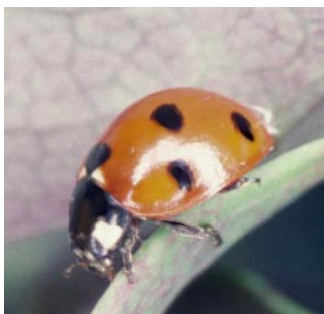


◀ 2-spot Ladybird

1 spot on each elytron.
No black scutellar spot. 4-5.5mm.
Common.

7-spot Ladybird ▶

3 spots on each elytron +
black scutellar spot.
6.5-8mm.
Very Common.



10-spot Ladybird ▶

Pronotum white with
black spots. Pattern on
elytra variable.
3.5-5mm. Common.



11-spot Ladybird ▶

5 spots on each elytron plus
black scutellar spot.
3.5-5mm. Mainly coastal.
Common.



Adonis' Ladybird ▶

Distinctive pronotal
pattern. Variable number
of black spots on elytra.
4-5.5mm. Sandy
grassland, mainly coastal.
Rare.



▲ 24-spot Ladybird

Small. Hairy. 3.5-4mm.
Grassland. Mainly coastal.



▲ 5-spot Ladybird

2 spots on each elytron + black
scutellar spot. 4-5mm.
On shingle. Very rare.



▲ Eyed Ladybird

Pale rings around dark spots.
Large, 7-9mm. On pine. Local.



◀ 13-spot Ladybird

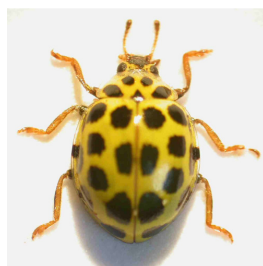
Large and elongate.
5-6.5mm. In marshy
places. Extinct?

Hieroglyphic Ladybird ▶

3 spots on each elytron +
black scutellary spot.
Foremost spot on elytra
usually elongate. 3.5-4.5mm.
Associated with heather.
Local.



Yellow wings with black spots



▲ 22-spot Ladybird

No black scutellar spot.
11 black spots on each
elytron. 3.5-4.5mm.
Grassland. Local.



▲ 14-spot Ladybird

Squarish black marks
on elytra often fused.
3.5-5mm. Scrub &
grassland. Widespread.



▲ 16-spot Ladybird

Black line along join between
elytra. 8 black spots on each
elytron, side ones often fused.
2.5-3.2mm. Marshland. Rare.



▲ Water Ladybird

Somewhat elongate. 9 black
spots on each elytron + black
scutellary spot. 3.8-4.5mm.
In reedbeds. Rare.

Pale spots on orange/brown background



▲ **18-spot Ladybird**
Distinctive W-shaped mark at base of elytra. 4.5-5.5mm. On pine. Local.



▲ **Striped Ladybird**
Large species with pale stripes. 7-8mm. On conifers. Local.



▲ **Cream-spot Ladybird**
Spots arranged in neat rows. 5-6.5mm. Common.



▲ **Orange Ladybird**
Spots not arranged in neat rows. 5-6.5mm. Increasingly common.

Elytra pale with no obvious markings



◀ **Larch Ladybird** ▶
Dark M-shaped mark on pronotum. 3.8-5mm. Associated with conifers. Common.



Wings black with pale spots – elytra and pronotum with flange at edge



▲ **Pine Ladybird**
4 red marks on elytra. 3.5-4mm. On conifers. Local.



▲ **Heather Ladybird**
Head dark red. Red markings on elytra in a band or row of 2-3 small dots. 3.5-4mm. On heather. Local



▲ **Kidney-spot Ladybird**
Head black. 1 large, red, often kidney-shaped mark on each elytron. 4.5-5mm. On birch & willow. Local

Wings black with pale spots – elytra and pronotum without flange at edge



▲ **10-spot Ladybird**
Melanis f. bimaculata. Pale legs.



▲ **10-spot Ladybird**
(Chequered form). Pale legs, last segment of antenna truncate at tip.



▲ **2-spot Ladybird**
f. quadrimaculata
Black legs, pale marks on pronotum restricted to a narrow edge.



▲ **Hieroglyphic Ladybird**
Black legs, pale marks on front corners of pronotum.