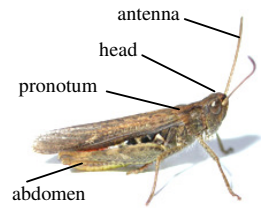


# Colour guide to Cumbrian Grasshoppers

Tullie House Museum, Castle Street, Carlisle CA3 8TP. © 2009

*Images are not to scale*



## Grasshoppers: Antennae shorter than length of the body



### ◀Field Grasshopper

Side margins of pronotum strongly incurved. Colour variable, male often develops red tip to abdomen. Front (lower) edge of forewing with slight bulge. Underside of thorax distinctly hairy. Widespread in dry grasslands on the coast and inland.



### Common Green Grasshopper ▲

Green, occasionally purple. No red colour on abdomen. Side keels of pronotum moderately incurved. No bulge on front (lower) margin of fore-wing. Widespread in grassland throughout Cumbria.



### Mottled Grasshopper ▲

Colour variable and blotchy. Tips of antennae thickened, more distinctly so in males. Side margins of pronotum strongly constricted. No bulge on front (lower) margin of wing. Widespread but local in sheltered, dry, sunny sites with short vegetation and bare ground.



male ▲ female ▼

### ◀Meadow Grasshopper

Side margins of pronotum gently incurved (not straight). Wings usually just shorter than abdomen in males and much shorter than abdomen in females (take care that you are looking at an adult and not a nymph, which have short wings in all species). Wings have bulge on front (lower) edge. Knees often distinctly black. Widespread in grasslands throughout Cumbria, also in bogs.



## Groundhoppers: Pronotum extends back over whole of the abdomen.



### Common Groundhopper

Obvious keel on pronotum, which rarely extends beyond tips of hind femora. Widespread on bare ground on peat bogs, forest tracks etc.



### Slender Groundhopper

Pronotum without prominent keel, usually extends beyond tips of hind femora. Wetland sites in extreme south of Cumbria.



#### **Short-winged Conehead**

Head pointed, cone-shaped. Green with a brown stripe along back. Wings normally shorter than abdomen. Rushes on saltmarsh on south Cumbrian coast - spreading north.

◀ male

**Bush-crickets:** large insects with very long antennae. Females have blade-like egg-laying tube at tip of the abdomen.

female ▶



#### **Bog Bush-cricket**

Wings shorter than abdomen. Broad cream edge to hind margin of pronotum sides. Abdomen bright green beneath and, in male, top of pronotum and margins of wings also green. Lowland bogs.

◀ female

male ▶



#### **Oak Bush-cricket ▶**

A pale green, fully winged bush-cricket. No median keel on pronotum. Woodland, hedges and gardens in south Cumbria.



#### **◀ Speckled Bush-cricket (female)**

Uniformly green with tiny black speckles. Wings very small. Very local in sheltered scrubby sites in south Cumbria and at St Bees Head.



#### **Dark Bush-cricket**

Brown with bright green/yellow underside to abdomen. Wings very short, most of abdomen uncovered. Warm scrubby areas in south Cumbria and on west coast.

◀ female

male ▶

