

# A provisional checklist of Cumbrian Diptera

November 2014



Stephen Hewitt



**Carlisle Natural  
History Society**  
*In search of nature since 1893*



Dedicated to

Neville Lawn Birkett (1916 - 2013)

A life-long student of the flies and natural history of Cumbria

Cover photograph: *Chrysops sepulchralis*, Eycott Hill, Greystoke, 2014 © David Clarke.

First record for Cumbria

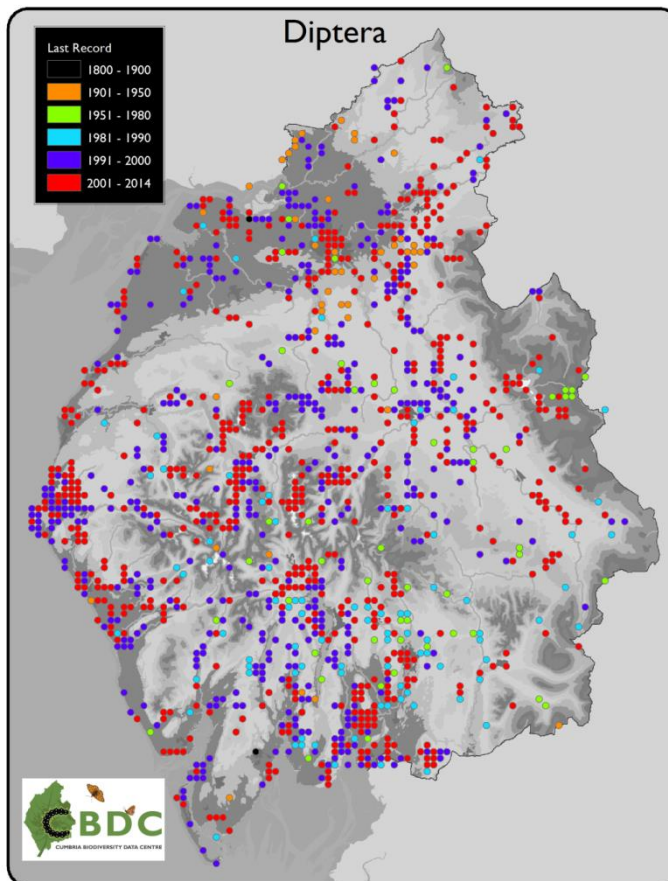
## Introduction

This draft checklist was put together to coincide with the annual conference of the society for the study of British Diptera - Dipterists Forum - at Tullie house Museum in November 2014. Some introductory sections have been included in this online version but no update has yet been made to the species data included.

With a current total of 2,129 species listed here, this provisional Cumbrian total is just 30% of the British list of c.7,000 species and clearly under-represents the Dipteran fauna of the county. Judging by the percentage of the British list occurring in Cumbria for better recorded wildlife groups, one would predict that the total Dipteran fauna of Cumbria will be between 3,500 - 4,000 species. Geographic coverage of Diptera records across the county is widely but thinly scattered.

The checklist is compiled from data extracted from the collections of former and present members of Carlisle Natural History Society held in Tullie House Museum and from the Cumbrian records database managed by Cumbria Biodiversity Data Centre. Together these sources provide a temporal continuum of data covering the last 125 years, from the formation of CNHS in 1893 to the present day. In addition to this locally compiled information, a significant number of Cumbrian records have been generated by Dipterists Forum during a Cumbrian field meeting in 1999. These data have been provided to CBDC via the NBN Gateway and are included in this checklist.

There is still a considerable amount of verification work required on this Cumbrian Diptera dataset and this provisional Cumbrian checklist to the order is provided with the understanding that there will be errors contained within it. The rather jumbled arrangement of species within some families is a consequence of the Recorder 6 taxon inventory and the protocols employed to output the data for this checklist. It is intended that future updates to the checklist will address these and other deficiencies.



*Cumbrian Diptera records by monad*

*Stephen Hewitt  
October 2016*

## Cumbrian Dipterology

Historically, Diptera have been less well studied in Cumbria than some other insect groups. In the 19th century information on Cumbrian Diptera was chiefly generated by entomologists visiting from elsewhere. The limestone hills, woods and mosses around Witherslack in the south of the county have long been a honeypot for visiting entomologists and in former times this area was governed as a part of Lancashire, 'Lancashire North of the Sands', and so came within the remit of bodies such as the Lancashire and Cheshire Entomological Society. One of the earliest Dipteran records for the county is of *Coremacera marginata* (Sciomyzidae) reported from Witherslack by B. Cooke in 1863, R.H. Meade recorded hoverflies at Grange-over-Sands in the 1890s, The eminent Dipterist, G.H. Verrall visited the county on more than one occasion and recorded the mountain hoverfly *Platycheirus melanopsis* on the road leading up to Helvellyn from Ullswater in 1876 - a species that has hardly been seen again in the county.

From the inception of CNHS in 1893, flies were collected, along with other Orders, by entomologists in CNHS as a sideline to their main interests in Lepidoptera, Coleoptera and Hemiptera - a specimen of *Syrphus ribesii* in Tullie House Museum was collected by G.B. Routledge in Carlisle in 1894. James Murray (1872-1942) took the keenest interest in flies and published on Diptera of the region in the *North Western Naturalist*, but Frank Day (1875-1963) and George Routledge (1864-1934) also took pains to collect and record flies. Their combined collections now in Tullie House Museum provide a vital archive of the Diptera of Cumberland and give a valuable historical perspective on the fauna of the county.

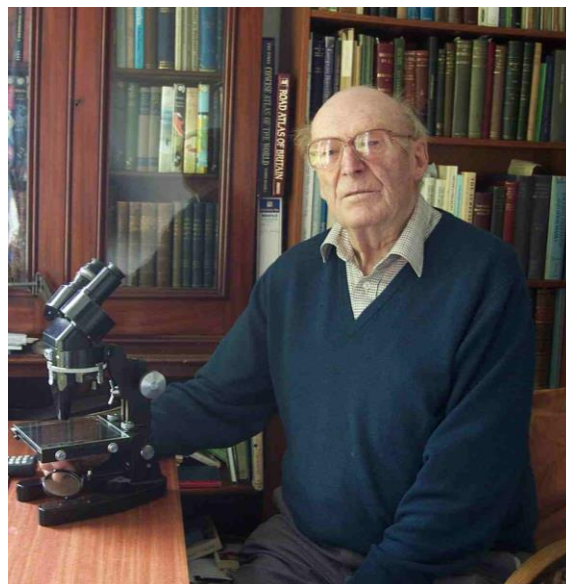


*Frank Day, George Routledge and Harry Britten on Cumrew Fell in 1903*  
©Carlisle Natural History Society

Harry Britten (1870-1954) lived at Great Salkeld in the Eden Valley and joined CNHS around 1900. For the next 12 years he thoroughly worked the natural history of his parish, looking at spiders and beetles in particular. In 1913 he left Cumberland for Oxford and then Manchester where he got a post in the entomology department of the Manchester Museum. Over the next 40 years he established a national reputation as an all round entomologist, including Diptera. He made frequent return visits to Cumbria to see friends and family during which he also collected insects. The great majority of Britten's insect specimens are in the Manchester Museum. These include a significant amount of Cumbrian provenanced material the data for which has yet to be extracted. However, Britten also gave and exchanged specimens with his old friends in CNHS and there are a number of Britten specimens within their collections in Tullie House Museum.

In the south of Cumbria J. Davis Ward of Kendal and particularly A.E. Wright (1873-1950) of Grange over Sands took a serious interest in Diptera. In 1940 the latter published a "List of Syrphidae of N. Lancashire and S. Westmorland" in the *North Western Naturalist* in which he reported 63% of British hoverfly species within a few miles of his home in Grange. Wright's Diptera collection is now in Oldham Museum.

In the second half of the 20th century, Dr Neville Birkett (1916-2013) of Kendal and latterly Grange-over-Sands was for much of that time the only resident Dipterist in Cumbria. He collected across the whole order and published records of interest from several families. His greatest contribution was in the family Chironomidae, where he discovered more than one species new to Britain and added greatly to the knowledge of the Cumbrian fauna. Neville Birkett gave his extensive insect collections to Tullie House Museum in 2004<sup>1</sup>. Their strength in Westmorland derived material perfectly complementing the existing strength in Cumberland voucher specimens to create an unmatched resource for the study of Cumbrian entomology.



*Neville Birkett in his study at Grange-over-Sands in 2004©Stephen Hewitt*

The upland Dipteran fauna of the Pennines was variously studied by L. Davis, J.C. Coulson and M. Nelson at Moorhouse National Nature Reserve in the 1950s and 60s, resulting in many first Cumbrian records and including some species new to science.

In more recent times, entomologists from Liverpool Museum have undertaken in-depth entomological surveys of Cumbria Willife Trust reserves at Burnsbeck Moss, Drumburgh Moss, Smardale Gill and Hutton Roof. Tom Mawdsley took the lead in collecting and identifying Diptera in these surveys and generated over 2,000 new records. A week-long field meeting of the Dipterists Forum based at Grange over Sands in June 1999 generated over 5,000 additional records for the county. Since the 1990s, John Parker of Penrith and I have studied Diptera in various habitats across the county, particularly Syrphidae, Tipuloidea, Tabanoidea and Empidoidea. Dorothy Iveson of Carlisle has taken an interest in Diptera and has contributed many records, particularly of hoverflies. With the development of macro-enabled digital cameras, hoverflies in particular have become a popular group as many can be identified from a good photograph and several naturalists in the county are generating interesting records in this way.

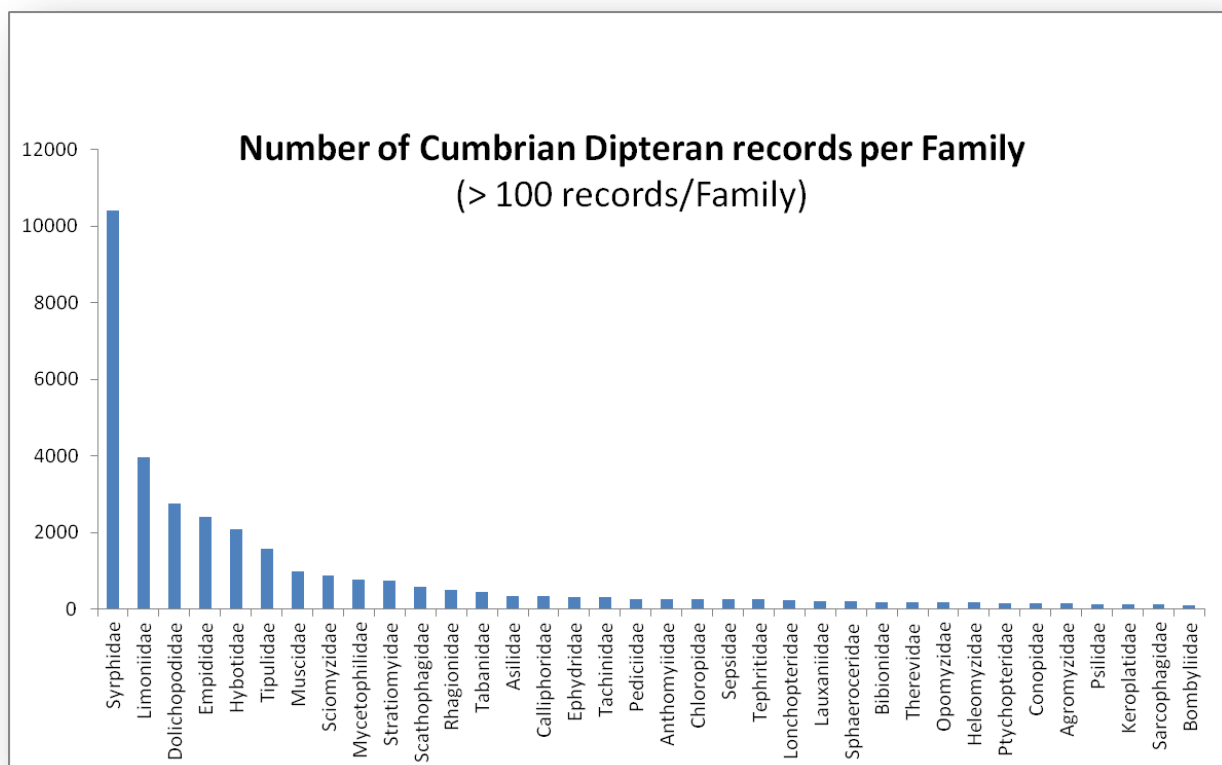
---

<sup>1</sup> With the exception of his Chironomid material which went to the World Museum, Liverpool.

## Taxonomic coverage

Some families of Diptera have been more popular than others with entomologists in the county. Of the near 35,000 records of Diptera in Cumbria on the CBDC database, around a third are of hoverflies, although the 195 hoverfly species recorded in Cumbria represent just 9% of the current total of 2,129 Diptera species recorded for the county and this will reduce as other families receive more attention (The 280 species of hoverfly on the British list represent only 4% of the 7,000 species of fly recorded in Britain). The 85 species of Soldierflies and allied families (Tabanoidea) in this Cumbria list amounts to 54% of British fauna. The 196 hoverfly species recorded in Cumbria represent an impressive 70% of the British fauna. This representation is even more impressive for the crane flies with 261 species in the county accounting for 80% of the British list.

There are 349 nationally rare and scarce species of fly recorded from Cumbria, of which five are Priority Species in the UK Biodiversity Action Plan - three crane flies (*Lipsothrix errans*, *L. nobilis* and *L. ecucullata*) one hoverfly (*Doros profuges*) and one stiletto-fly (*Clorismia rustica*).



The table opposite provides a summary of recording effort and species representation for each family. The families are arranged in descending order by number of records.

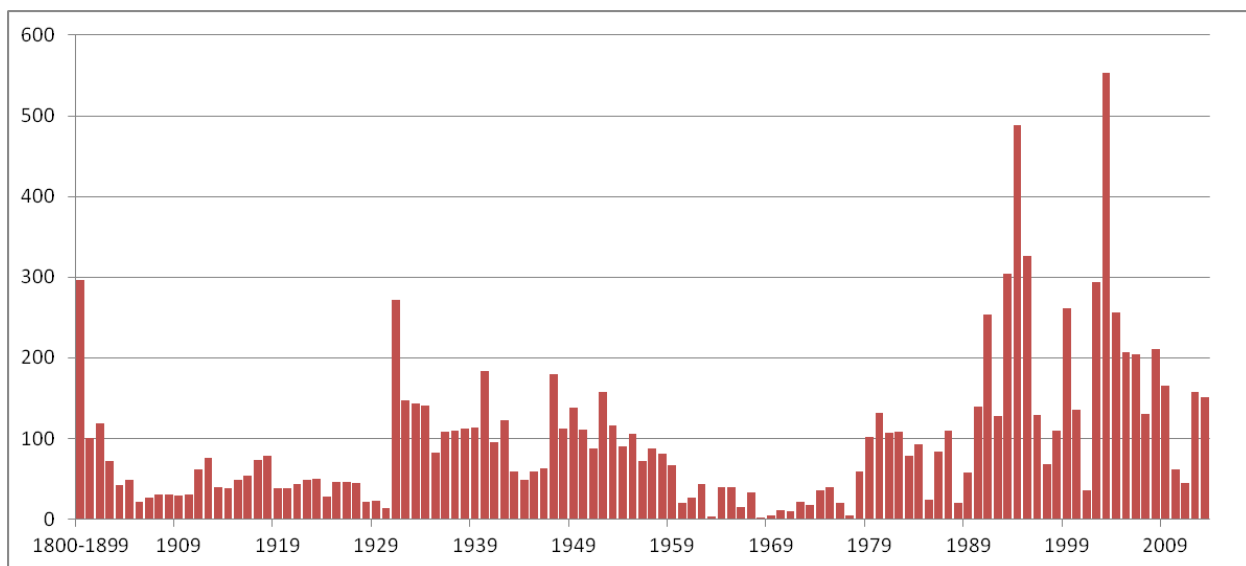
Family	Records	Species
Syrphidae	10402	195
Limoniidae	3956	167
Dolichopodidae	2764	171
Empididae	2416	147
Hybotidae	2090	92
Tipulidae	1587	68
Muscidae	997	134
Sciomyzidae	879	46
Mycetophilidae	766	150
Stratiomyidae	749	30
Scathophagidae	585	35
Rhagionidae	510	10
Tabanidae	445	13
Asilidae	341	15
Calliphoridae	329	22
Ephydriidae	326	38
Tachinidae	308	53
Pediciidae	267	19
Anthomyiidae	262	53
Chloropidae	262	49
Sepsidae	258	19
Tephritidae	250	32
Lonchopteridae	228	5
Lauxaniidae	220	33
Sphaeroceridae	202	41
Bibionidae	191	14
Therevidae	186	7
Opomyzidae	183	9
Heleomyzidae	176	33
Ptychopteridae	164	6
Conopidae	148	9
Agromyzidae	148	34
Psilidae	128	16
Keroplatidae	117	23
Sarcophagidae	117	15
Bombyliidae	112	4
Ulidiidae	99	9
Fanniidae	98	22
Micropezidae	96	6
Pipunculidae	87	29
Pallopidae	82	9
Anisopodidae	80	4
Dryomyzidae	72	3
Ceratopogonidae	68	22
Chamaemyiidae	64	8
Clusiidae	63	6
Trichoceridae	62	7

Family	Records	Species
Xylophagidae	60	1
Hippoboscidae	58	7
Cylindrotomidae	56	4
Sciaridae	55	8
Lonchaeidae	49	16
Dixidae	48	12
Drosophilidae	46	13
Athericidae	45	2
Bolitophilidae	43	7
Phoridae	42	25
Cecidomyiidae	38	14
Diastatidae	37	5
Psychodidae	35	12
Platystomatidae	35	2
Culicidae	26	6
Microphoridae	22	3
Piophilidae	22	4
Opetiidae	22	1
Phaeomyiidae	21	2
Canacidae	15	4
Platypezidae	15	6
Scatopsidae	12	5
Anthomyzidae	11	4
Acroceridae	10	2
Simuliidae	10	4
Diadocidiidae	10	2
Heterocheilidae	8	1
Chaoboridae	6	3
Ditomyiidae	5	1
Rhinophoridae	5	2
Trixoscelididae	4	1
Thaumaleidae	4	2
Aulacigastridae	3	1
Chironomidae	3	2
Nycteribiidae	2	1
Scenopinidae	2	1
Coelopidae	2	1
Milichiidae	2	1
Atelestidae	2	1
Carnidae	2	1
Campichoetidae	1	1
Mycetobiidae	1	1
Camillidae	1	1
Odiniidae	1	1
Oestridae	1	1
Megamerinidae	1	1
<b>Grand Total</b>	<b>34839</b>	<b>2128</b>

## The Diptera collections at Tullie House Museum

The combined Diptera collections in Tullie House Museum amount to some 15,000 specimens, providing 11,100 separate records of 1,695 species.

70% of the collection is of Cumbrian provenance, providing 9,928 records of 1,113 species of fly in the county. The collection provides voucher specimens for 22% of Cumbrian Diptera records and 52% of Cumbrian species are represented in the collection.



*Number of records per year for specimens in the Diptera collection in Tullie House Museum*

## Acknowledgements

My thanks go to the staff at CBDC for maintaining and developing the database and for supplying the spreadsheet from which this checklist is derived.

Data from the Diptera collections in Tullie House have been largely transcribed and databased by Dorothy Iveson and I wish to recognise her invaluable contribution to the care and accessibility of the insect collections in the Museum and the transcription of the records they support. Dorothy, Geoff Naylor and Tony Tipling also provided a huge contribution to the mobilisation of collections data by inputting records to the Recorder database.

Finally, tribute should be paid to all the people, past and present, who have got a buzz out of recording and sharing information on the flies of Cumbria. This checklist is one outcome of the years of labour that they have cumulatively devoted to this fascinating subject. Excitingly, there is still much to discover.

# Checklist of Cumbrian Diptera (November 2014)

2,129 species (= 30% of British fauna)

Family/Species	Year of first record	Year of latest record	Number of Records	No. Hectads
<b>Tipulidae</b>				
<i>Ctenophora flaveolata</i>	2009	2011	3	2
<i>Ctenophora pectinicornis</i>	1940	2013	13	6
<i>Dictenidia bimaculata</i>	1993	2012	3	3
<i>Tanyptera atrata</i>	1901	2012	24	7
<i>Tanyptera nigricornis</i>	2003	2003	1	1
<i>Dolichopeza albipes</i>	1952	2011	28	13
<i>Prionocera turcica</i>	1988	2013	56	16
<i>Nephrotoma analis</i>	1999	2007	29	11
<i>Nephrotoma appendiculata</i>	1981	2012	23	13
<i>Nephrotoma crocata</i>	1896	1942	5	2
<i>Nephrotoma dorsalis</i>	1999	2005	11	2
<i>Nephrotoma flavescens</i>	1923	2007	21	10
<i>Nephrotoma flavipalpis</i>	1993	2009	15	10
<i>Nephrotoma guestfalica</i>	1999	2011	31	11
<i>Nephrotoma lunulicornis</i>	1999	2007	22	6
<i>Nephrotoma quadrifaria</i>	1933	2013	45	17
<i>Nephrotoma quadristriata</i>	1999	2007	3	2
<i>Nephrotoma scurra</i>	1999	2013	12	8
<i>Nephrotoma submaculosa</i>	1952	2009	37	16
<i>Nigrotipula nigra</i>	1976	2003	7	2
<i>Tipula fulvipennis</i>	1992	2013	49	19
<i>Tipula luna</i>	1994	2012	36	14
<i>Tipula maxima</i>	1905	2013	40	21
<i>Tipula vittata</i>	1943	2012	50	20
<i>Tipula unca</i>	1933	2013	64	20
<i>Tipula flavolineata</i>	1999	2012	12	7
<i>Tipula alpina</i>	1957	2002	6	3
<i>Tipula cava</i>	1976	2006	8	6
<i>Tipula fascipennis</i>	1993	2012	44	18
<i>Tipula helvola</i>	2010	2010	1	1
<i>Tipula lunata</i>	1994	2011	30	16
<i>Tipula vernalis</i>	1933	2013	26	16
<i>Tipula luteipennis</i>	1992	2008	11	5
<i>Tipula melanoceros</i>	1952	2001	8	3
<i>Tipula irrorata</i>	2012	2012	9	1
<i>Tipula pabulina</i>	1922	2007	8	4
<i>Tipula pseudovariipennis</i>	1901	1916	3	1
<i>Tipula submarmorata</i>	1994	2011	23	8

Family/Species	Year of first record	Year of latest record	Number of Records	No. Hectads
<i>Tipula truncorum</i>	1922	1995	2	2
<i>Tipula varipennis</i>	1933	2011	48	19
<i>Tipula alpium</i>	1950	2010	13	8
<i>Tipula cheethami</i>	1924	2006	13	8
<i>Tipula confusa</i>	1900	2010	20	12
<i>Tipula gimmerthali</i>	1950	2009	15	4
<i>Tipula grisescens</i>	1946	2011	8	4
<i>Tipula limbata</i>	1952	2003	11	7
<i>Tipula obsoleta</i>	1933	2007	7	4
<i>Tipula pagana</i>	1952	2009	24	12
<i>Tipula rufina</i>	1933	2013	17	11
<i>Tipula signata</i>	1992	1994	8	7
<i>Tipula staegeri</i>	1952	2005	27	19
<i>Tipula subnodicornis</i>	1936	2012	28	16
<i>Tipula variicornis</i>	1981	2012	36	12
<i>Tipula yerburyi</i>	1999	1999	1	1
<i>Tipula oleracea</i>	1895	2013	74	23
<i>Tipula paludosa</i>	1920	2013	50	21
<i>Tipula subcunctans</i>	1950	2005	24	15
<i>Tipula hortorum</i>	1916	2003	4	3
<i>Tipula montana</i>	1923	2011	9	6
<i>Tipula nubeculosa</i>	1924	1924	1	1
<i>Tipula scripta</i>	1988	2012	63	19
<i>Tipula coerulescens</i>	1931	2001	6	3
<i>Tipula couckeii</i>	1994	2011	96	18
<i>Tipula lateralis</i>	1934	2012	74	27
<i>Tipula marginella</i>	1999	1999	2	1
<i>Tipula montium</i>	1940	2009	70	20
<i>Tipula pierrei</i>	1994	2003	7	3
<i>Tipula pruinosa</i>	1972	2005	12	8
<b>Cylindrotomidae</b>				
<i>Cylindrotoma distinctissima</i>	1995	2011	16	6
<i>Diogma glabrata</i>	1940	2012	25	8
<i>Phalacrocerca replicata</i>	1935	2012	11	9
<i>Triogma trisulcata</i>	2001	2011	4	3
<b>Pediciidae</b>				
<i>Dicranota bimaculata</i>	1952	2008	17	10
<i>Dicranota guerini</i>	1952	2008	19	9
<i>Dicranota claripennis</i>	1994	2012	17	8
<i>Dicranota lucidipennis</i>	1999	2003	2	1
<i>Dicranota gracilipes</i>	1955	2004	7	4
<i>Dicranota pavidata</i>	1992	2008	5	5
<i>Dicranota robusta</i>	1952	2007	8	4

Family/Species	Year of first record	Year of latest record	Number of Records	No. Hectads
<i>Dicranota simulans</i>	1954	2007	3	2
<i>Dicranota subtilis</i>	1952	2008	13	6
<i>Dicranota exclusa</i>	1952	2009	8	5
<i>Pedicia occulta</i>	1992	2008	15	7
<i>Pedicia littoralis</i>	1981	2005	18	9
<i>Pedicia straminea</i>	1992	2010	13	8
<i>Pedicia rivosa</i>	1926	2014	45	20
<i>Tricyphona immaculata</i>	1933	2012	43	17
<i>Tricyphona schummeli</i>	1999	2012	13	5
<i>Tricyphona unicolor</i>	2008	2008	1	1
<i>Ula mollissima</i>	2005	2011	2	2
<i>Ula sylvatica</i>	1992	2012	18	7
<b>Limoniidae</b>				
<i>Dicranophragma adjunctum</i>	1992	2012	9	7
<i>Dicranophragma nemorale</i>	2004	2012	37	17
<i>Arctoconopa melampodia</i>	1999	2006	19	3
<i>Cheilotrichia imbuta</i>	1992	2005	8	6
<i>Cheilotrichia cinerascens</i>	1952	2012	63	17
<i>Crypteria limnophiloides</i>	1992	1992	3	3
<i>Ellipteroides lateralis</i>	1984	2007	3	3
<i>Erioconopa diuturna</i>	1952	2005	16	10
<i>Erioconopa trivialis</i>	1952	2012	83	29
<i>Erioptera flavata</i>	1988	2011	21	12
<i>Erioptera fuscipennis</i>	1952	2012	39	16
<i>Erioptera fusculenta</i>	1999	2012	12	5
<i>Erioptera griseipennis</i>	2000	2011	17	7
<i>Erioptera lutea</i>	1999	2012	93	21
<i>Erioptera nielsenii</i>	1988	2011	9	4
<i>Erioptera squalida</i>	1920	1920	1	1
<i>Erioptera verralli</i>	2000	2000	1	1
<i>Erioptera pilipes</i>	1982	1999	3	1
<i>Gnophomyia viridipennis</i>	2003	2013	6	2
<i>Gonempeda flava</i>	2000	2011	19	8
<i>Gonomyia conoviensis</i>	1955	2013	7	5
<i>Gonomyia dentata</i>	1952	2012	17	10
<i>Gonomyia lucidula</i>	1981	2012	9	7
<i>Gonomyia recta</i>	1999	2006	3	2
<i>Gonomyia simplex</i>	1981	2000	3	3
<i>Gonomyia tenella</i>	2004	2011	16	3
<i>Gonomyia abbreviata</i>	2002	2003	5	3
<i>Gonomyia abscondita</i>	2004	2005	6	2
<i>Hoplolabis areolata</i>	2000	2011	28	9
<i>Hoplolabis vicina</i>	2004	2011	15	3

Family/Species	Year of first record	Year of latest record	Number of Records	No. Hectads
<i>Hoplolabis yezoana</i>	2004	2011	28	6
<i>Idiocera bradleyi</i>	2002	2004	7	2
<i>Idiocera punctata</i>	1922	1922	1	1
<i>Ilisia maculata</i>	1988	2012	20	10
<i>Ilisia occoecata</i>	1999	2012	8	4
<i>Molophilus appendiculatus</i>	1992	2013	66	23
<i>Molophilus ater</i>	1941	2012	12	8
<i>Molophilus bifidus</i>	1999	2011	15	9
<i>Molophilus bihamatus</i>	1999	2012	7	3
<i>Molophilus cinereifrons</i>	1995	2012	25	11
<i>Molophilus corniger</i>	1984	2008	8	4
<i>Molophilus crassipygus</i>	1999	2011	32	10
<i>Molophilus curvatus</i>	1981	2008	12	9
<i>Molophilus czizeki</i>	1968	1968	1	1
<i>Molophilus flavus</i>	1999	2011	16	11
<i>Molophilus griseus</i>	1988	2012	94	27
<i>Molophilus lackschewitzianus</i>	2002	2011	2	2
<i>Molophilus medius</i>	1981	2012	83	23
<i>Molophilus niger</i>	1937	2008	16	6
<i>Molophilus obscurus</i>	1999	2012	18	10
<i>Molophilus occultus</i>	1976	2012	63	18
<i>Molophilus ochraceus</i>	1999	2012	43	16
<i>Molophilus pleuralis</i>	1999	2012	9	3
<i>Molophilus propinquus</i>	2002	2012	24	13
<i>Molophilus pusillus</i>	1992	2011	31	12
<i>Molophilus serpentiger</i>	2002	2012	17	8
<i>Molophilus undulatus</i>	2000	2007	10	4
<i>Molophilus variispinus</i>	1999	2009	7	3
<i>Neolimnophila carteri</i>	1929	2005	3	3
<i>Ormosia aciculata</i>	1920	1920	1	1
<i>Ormosia albitibia</i>	1972	2007	8	5
<i>Ormosia depilata</i>	2002	2012	14	6
<i>Ormosia fascipennis</i>	1999	2003	3	2
<i>Ormosia hederæ</i>	1952	2012	19	13
<i>Ormosia lineata</i>	1930	2011	11	7
<i>Ormosia nodulosa</i>	1940	2013	70	24
<i>Ormosia pseudosimilis</i>	1933	2012	20	9
<i>Rhabdomastix edwardsi</i>	1999	2009	54	14
<i>Rhabdomastix inclinata</i>	2001	2011	8	3
<i>Rhabdomastix laeta</i>	2008	2008	2	1
<i>Rhypholophus bifurcatus</i>	2005	2005	1	1
<i>Rhypholophus varius</i>	1933	2012	5	4
<i>Scleroprocta pentagonalis</i>	2007	2007	1	1

Family/Species	Year of first record	Year of latest record	Number of Records	No. Hectads
<i>Scleroprocta sororcula</i>	2002	2006	4	3
<i>Symplecta meigeni</i>	1999	1999	6	2
<i>Symplecta stictica</i>	1933	2012	28	12
<i>Symplecta hybrida</i>	1999	2012	8	4
<i>Symplecta novaezembiae</i>	2003	2003	1	1
<i>Tasiocera fuscescens</i>	1981	2011	4	4
<i>Tasiocera murina</i>	1976	2012	15	11
<i>Tasiocera muscula</i>	2004	2004	1	1
<i>Tasiocera robusta</i>	1999	2012	5	5
<i>Dactylolabis sexmaculata</i>	1952	2009	15	8
<i>Dactylolabis transversa</i>	1972	2002	3	2
<i>Austrolimnophila ochracea</i>	1988	2013	186	30
<i>Eloeophila apicata</i>	1999	2011	8	5
<i>Eloeophila maculata</i>	1999	2012	11	7
<i>Eloeophila mundata</i>	2004	2005	2	2
<i>Eloeophila submarmorata</i>	1999	2004	5	4
<i>Eloeophila trimaculata</i>	2006	2008	2	2
<i>Epiphragma ocellare</i>	1988	2011	69	22
<i>Euphylidorea aperta</i>	1988	2005	15	6
<i>Euphylidorea lineola</i>	1998	2008	4	3
<i>Euphylidorea meigenii</i>	1934	2011	32	15
<i>Euphylidorea phaeostigma</i>	1999	2011	17	5
<i>Hexatoma bicolor</i>	1952	2006	4	3
<i>Hexatoma fuscipennis</i>	1999	2011	19	5
<i>Idioptera linnei</i>	1991	2011	9	5
<i>Idioptera pulchella</i>	2002	2013	22	5
<i>Limnophila schranki</i>	1940	2011	25	12
<i>Neolimnomyia batava</i>	1999	2005	13	5
<i>Neolimnomyia filata</i>	1981	2012	35	13
<i>Paradelphomyia ecalcarata</i>	2004	2005	6	1
<i>Paradelphomyia fuscula</i>	2004	2008	3	2
<i>Paradelphomyia nielsenii</i>	2003	2011	4	4
<i>Paradelphomyia senilis</i>	1981	2011	55	16
<i>Phylidorea fulvonervosa</i>	1934	2012	67	26
<i>Phylidorea abdominalis</i>	1995	2011	4	3
<i>Phylidorea ferruginea</i>	1995	2012	59	14
<i>Phylidorea heterogyna</i>	2001	2011	6	4
<i>Phylidorea longicornis</i>	1999	2012	17	4
<i>Phylidorea squalens</i>	1994	2013	27	11
<i>Pilaria decolor</i>	2003	2012	7	5
<i>Pilaria discicollis</i>	1999	2011	37	14
<i>Pilaria fuscipennis</i>	1999	1999	15	5
<i>Pilaria meridiana</i>	2005	2011	3	2

Family/Species	Year of first record	Year of latest record	Number of Records	No. Hectads
<i>Pilaria scutellata</i>	1988	1988	1	1
<i>Pseudolimnophila lucorum</i>	1988	2008	37	12
<i>Pseudolimnophila sepium</i>	1988	2005	4	3
<i>Achyrolimonia decemmaculata</i>	1999	2011	28	7
<i>Antocha vitripennis</i>	1999	2012	51	12
<i>Atypophthalmus inustus</i>	2002	2008	3	3
<i>Dicranomyia aperta</i>	1999	2005	8	5
<i>Dicranomyia autumnalis</i>	1933	2012	72	30
<i>Dicranomyia chorea</i>	1933	2012	58	25
<i>Dicranomyia didyma</i>	1952	2009	27	13
<i>Dicranomyia distendens</i>	1999	2012	12	7
<i>Dicranomyia goritiensis</i>	2008	2009	3	1
<i>Dicranomyia halterella</i>	2003	2003	1	1
<i>Dicranomyia mitis</i>	1999	2011	10	7
<i>Dicranomyia modesta</i>	1952	2012	166	32
<i>Dicranomyia omissinervis</i>	2004	2005	5	3
<i>Dicranomyia ornata</i>	2002	2005	2	2
<i>Dicranomyia sera</i>	1972	2009	21	8
<i>Dicranomyia ventralis</i>	1999	2012	3	2
<i>Dicranomyia sericata</i>	2002	2002	2	1
<i>Dicranomyia magnicauda</i>	1999	1999	1	1
<i>Dicranomyia stigmatica</i>	2001	2003	3	2
<i>Dicranomyia morio</i>	1940	2009	21	13
<i>Dicranomyia occidua</i>	2006	2006	2	1
<i>Dicranomyia stylifera</i>	1952	1952	2	1
<i>Dicranomyia fusca</i>	1981	2011	40	17
<i>Dicranomyia aquosa</i>	1984	2005	6	4
<i>Helius flavus</i>	1988	2012	27	12
<i>Helius longirostris</i>	1999	2012	40	12
<i>Helius pallirostris</i>	2009	2012	3	2
<i>Limonia dilutior</i>	1950	2012	16	8
<i>Limonia flavipes</i>	1940	2012	48	12
<i>Limonia macrostigma</i>	1988	2012	90	22
<i>Limonia maculipennis</i>	2004	2004	1	1
<i>Limonia nigropunctata</i>	2003	2003	2	1
<i>Limonia nubeculosa</i>	1923	2012	267	41
<i>Limonia phragmitidis</i>	1976	2011	81	20
<i>Limonia stigma</i>	2004	2012	2	2
<i>Limonia trivittata</i>	1982	2008	29	15
<i>Lipsothrix ecucullata</i>	2004	2004	2	2
<i>Lipsothrix errans</i>	2003	2013	24	9
<i>Lipsothrix nobilis</i>	2003	2004	16	4

Family/Species	Year of first record	Year of latest record	Number of Records	No. Hectads
<i>Lipsothrix remota</i>	1995	2013	125	33
<i>Metalimnobia bifasciata</i>	2011	2012	9	2
<i>Metalimnobia quadrinotata</i>	1999	2012	25	7
<i>Neolimonia dumetorum</i>	1988	2012	71	17
<i>Orimarga juvenilis</i>	2003	2003	1	1
<i>Orimarga virgo</i>	1984	1984	1	1
<i>Rhipidia maculata</i>	1933	2012	138	35
<i>Thaumastoptera calceata</i>	2007	2007	2	1
<b>Bibionidae</b>				
<i>Bibio clavipes</i>	2001	2001	1	1
<i>Bibio ferruginatus</i>	2002	2002	1	1
<i>Bibio johannis</i>	1963	1976	3	2
<i>Bibio lanigerus</i>	1976	2002	8	2
<i>Bibio lepidus</i>	1963	2001	14	5
<i>Bibio leucopterus</i>	2002	2002	9	2
<i>Bibio marci</i>	1963	2014	35	15
<i>Bibio nigriventris</i>	1963	2007	19	6
<i>Bibio pomonae</i>	1963	2011	39	11
<i>Bibio reticulatus</i>	1976	2002	2	2
<i>Bibio varipes</i>	2002	2002	3	1
<i>Bibio venosus</i>	2002	2002	2	1
<i>Dilophus febrilis</i>	1963	2012	41	12
<i>Dilophus femoratus</i>	1963	2007	14	4
<b>Bolitophilidae</b>				
<i>Bolitophila cinerea</i>	1992	2001	9	6
<i>Bolitophila saundersii</i>	1992	1999	23	11
<i>Bolitophila glabrata</i>	1992	1992	2	2
<i>Bolitophila hybrida</i>	1992	1992	5	5
<i>Bolitophila modesta</i>	1992	1992	1	1
<i>Bolitophila occlusa</i>	1992	1992	2	2
<i>Bolitophila pseudohybrida</i>	1992	1992	1	1
<b>Diadocidiidae</b>				
<i>Diadocidia ferruginosa</i>	1999	2002	5	1
<i>Diadocidia spinosula</i>	1992	1999	5	3
<b>Ditomyiidae</b>				
<i>Symmerus annulatus</i>	1999	1999	5	2
<b>Keroplattidae</b>				
<i>Cerotelion striatum</i>	1999	1999	5	3
<i>Keroplatus testaceus</i>	1982	1999	3	3
<i>Isoneuromyia semirufa</i>	2002	2003	3	2
<i>Macrorrhyncha flava</i>	1999	1999	12	3
<i>Monocentrotia lundstroemi</i>	1976	1976	1	1
<i>Orfelia fasciata</i>	1999	1999	2	1

Family/Species	Year of first record	Year of latest record	Number of Records	No. Hectads
<i>Orfelia nemoralis</i>	1999	1999	2	1
<i>Orfelia pallida</i>	1999	1999	2	1
<i>Orfelia lugubris</i>	1999	1999	2	1
<i>Platyura marginata</i>	1999	2002	9	3
<i>Urytalpa macrocera</i>	1999	1999	1	1
<i>Macrocera angulata</i>	1999	2002	5	2
<i>Macrocera centralis</i>	1922	1922	1	1
<i>Macrocera crassicornis</i>	1929	1929	1	1
<i>Macrocera estonica</i>	1950	1950	1	1
<i>Macrocera fasciata</i>	1999	1999	10	3
<i>Macrocera fascipennis</i>	1996	1999	2	2
<i>Macrocera inversa</i>	1978	1978	1	1
<i>Macrocera lutea</i>	1999	1999	2	1
<i>Macrocera phalerata</i>	1999	2002	4	1
<i>Macrocera stigma</i>	1963	2010	3	3
<i>Macrocera stigmoides</i>	1999	1999	2	1
<i>Macrocera vittata</i>	1992	2003	43	9
<b>Mycetophilidae</b>				
<i>Apolephthisa subincana</i>	1999	1999	2	1
<i>Boletina basalis</i>	2002	2011	2	2
<i>Boletina dubia</i>	1963	2010	9	8
<i>Boletina gripha</i>	1921	2011	22	11
<i>Boletina plana</i>	2009	2011	2	2
<i>Boletina rejecta</i>	1999	1999	1	1
<i>Boletina sciarina</i>	2009	2009	1	1
<i>Boletina trivittata</i>	1992	2011	30	12
<i>Coelosia flava</i>	1999	1999	23	5
<i>Coelosia tenella</i>	1999	1999	2	1
<i>Dziedzickia marginata</i>	1992	1992	3	3
<i>Palaeodocosia vittata</i>	1999	1999	2	1
<i>Saigusaia flaviventris</i>	1999	2003	16	3
<i>Synapha fasciata</i>	1999	1999	10	3
<i>Syntemna nitidula</i>	1921	1921	2	1
<i>Tetragoneura sylvatica</i>	1992	1992	1	1
<i>Leia fascipennis</i>	1992	2003	2	2
<i>Rondaniella dimidiata</i>	1987	1987	1	1
<i>Allodia lugens</i>	1992	1999	16	8
<i>Allodia lundstroemi</i>	1992	1999	4	3
<i>Allodia ornaticollis</i>	1992	1992	9	8
<i>Allodia truncata</i>	1992	1992	1	1
<i>Allodia zaitzevi</i>	1999	1999	2	1
<i>Allodiopsis rustica</i>	1992	1999	5	2
<i>Anatella ciliata</i>	1992	1999	6	5

Family/Species	Year of first record	Year of latest record	Number of Records	No. Hectads
<i>Anatella dampfi</i>	1950	1950	1	1
<i>Anatella flavomaculata</i>	1992	1992	4	3
<i>Anatella longisetosa</i>	1992	1999	3	2
<i>Brevicornu griseolum</i>	1999	1999	1	1
<i>Brevicornu fuscipenne</i>	1992	1992	1	1
<i>Brevicornu griseicolle</i>	1992	1992	4	3
<i>Brevicornu nigrofusum</i>	1982	1982	1	1
<i>Brevicornu sericoma</i>	1976	2010	18	11
<i>Cordyla brevicornis</i>	1992	1992	1	1
<i>Cordyla crassicornis</i>	1992	1999	7	4
<i>Cordyla fasciata</i>	2002	2002	1	1
<i>Cordyla fissa</i>	1992	1992	1	1
<i>Cordyla parvipalpis</i>	1978	1999	3	2
<i>Exechia confinis</i>	1992	1992	1	1
<i>Exechia contaminata</i>	1992	1992	7	5
<i>Exechia dorsalis</i>	1992	1992	3	3
<i>Exechia festiva</i>	1992	1992	2	2
<i>Exechia fusca</i>	1992	1992	12	9
<i>Exechia nigra</i>	1950	1992	2	2
<i>Exechia nigroscutellata</i>	1992	1992	3	3
<i>Exechia parva</i>	1992	1992	3	3
<i>Exechia parvula</i>	1992	1992	7	6
<i>Exechia pseudofestiva</i>	1977	1977	1	1
<i>Exechia separata</i>	1992	1992	1	1
<i>Exechia seriata</i>	1992	1992	4	4
<i>Exechia spinuligera</i>	1963	1992	9	6
<i>Exechiopsis clypeata</i>	1992	1992	2	2
<i>Exechiopsis fimbriata</i>	1992	1992	2	2
<i>Exechiopsis intersecta</i>	1992	1992	2	2
<i>Exechiopsis ligulata</i>	1992	1992	2	2
<i>Exechiopsis pulchella</i>	1992	1992	1	1
<i>Exechiopsis subulata</i>	1992	1992	3	3
<i>Exechiopsis unguiculata</i>	1992	1992	2	2
<i>Pseudexechia aurivernica</i>	1971	1992	5	4
<i>Pseudexechia trisignata</i>	1992	1999	5	3
<i>Pseudexechia trivittata</i>	1992	1992	4	4
<i>Pseudobrachypeza helvetica</i>	1999	1999	10	2
<i>Rymosia bifida</i>	1992	1992	1	1
<i>Rymosia fasciata</i>	1992	1992	5	4
<i>Rymosia signatipes</i>	1992	1992	1	1
<i>Rymosia virens</i>	1940	1992	3	3
<i>Stigmatomeria crassicornis</i>	1992	1999	10	3
<i>Tarnania nemoralis</i>	1992	1992	4	4

Family/Species	Year of first record	Year of latest record	Number of Records	No. Hectads
<i>Dynatosoma fuscicorne</i>	1999	2003	3	2
<i>Dynatosoma reciprocum</i>	1999	1999	2	1
<i>Epicypta aterrima</i>	1992	1993	2	2
<i>Mycetophila blanda</i>	1992	1992	1	1
<i>Mycetophila britannica</i>	1992	1999	4	3
<i>Mycetophila curviseta</i>	1992	1999	20	6
<i>Mycetophila edwardsi</i>	1992	1999	6	3
<i>Mycetophila finlandica</i>	1999	1999	2	1
<i>Mycetophila forcipata</i>	1999	1999	8	2
<i>Mycetophila formosa</i>	1992	1999	17	4
<i>Mycetophila fraterna</i>	1992	1999	17	5
<i>Mycetophila fungorum</i>	1963	1999	13	7
<i>Mycetophila hetschkoi</i>	1982	1982	1	1
<i>Mycetophila ichneumonea</i>	1992	1999	18	5
<i>Mycetophila luctuosa</i>	1992	1992	6	6
<i>Mycetophila marginata</i>	1992	1999	26	6
<i>Mycetophila ocellus</i>	1992	1999	19	8
<i>Mycetophila ornata</i>	1963	1999	34	9
<i>Mycetophila perpallida</i>	1999	1999	2	1
<i>Mycetophila pumila</i>	1992	1992	1	1
<i>Mycetophila rudis</i>	1992	1999	4	3
<i>Mycetophila ruficollis</i>	1963	1963	1	1
<i>Mycetophila signatoides</i>	1992	1999	5	4
<i>Mycetophila stolidia</i>	1999	1999	1	1
<i>Mycetophila stylata</i>	1992	1999	3	1
<i>Mycetophila trinotata</i>	1999	2002	3	2
<i>Mycetophila unicolor</i>	1992	1992	5	4
<i>Mycetophila unipunctata</i>	1992	1999	11	6
<i>Mycetophila vittipes</i>	1992	2010	9	4
<i>Phronia biarcuata</i>	1992	2002	11	6
<i>Phronia braueri</i>	1992	1999	6	3
<i>Phronia cinerascens</i>	1992	1999	13	3
<i>Phronia conformis</i>	1992	1999	3	2
<i>Phronia coritanica</i>	1999	1999	4	2
<i>Phronia egregia</i>	1992	1992	1	1
<i>Phronia exigua</i>	1992	1992	5	5
<i>Phronia flavipes</i>	1992	1992	2	2
<i>Phronia humeralis</i>	1992	1999	18	8
<i>Phronia interstincta</i>	1924	1924	1	1
<i>Phronia nigricornis</i>	1992	1999	5	4
<i>Phronia nitidiventris</i>	1992	1992	5	4
<i>Phronia triangularis</i>	1992	1992	2	2
<i>Platurocypta testata</i>	1999	1999	2	1

Family/Species	Year of first record	Year of latest record	Number of Records	No. Hectads
<i>Sceptonia fumipes</i>	2011	2011	1	1
<i>Sceptonia membranacea</i>	1937	1937	1	1
<i>Trichonta foeda</i>	1999	1999	6	2
<i>Trichonta fragilis</i>	1991	1991	1	1
<i>Trichonta hamata</i>	1992	1992	1	1
<i>Trichonta vulcani</i>	1999	1999	1	1
<i>Zygomyia humeralis</i>	1992	1992	1	1
<i>Zygomyia notata</i>	2003	2003	1	1
<i>Zygomyia pictipennis</i>	1992	1999	3	1
<i>Zygomyia valida</i>	1992	1992	1	1
<i>Zygomyia vara</i>	1992	1992	2	2
<i>Mycomya annulata</i>	1992	1999	4	3
<i>Mycomya cinerascens</i>	1992	2002	11	8
<i>Mycomya flavicollis</i>	1999	1999	1	1
<i>Mycomya griseovittata</i>	1950	2011	3	2
<i>Mycomya marginata</i>	1999	1999	1	1
<i>Mycomya neohyalinata</i>	1992	1999	7	5
<i>Mycomya ornata</i>	1950	1950	1	1
<i>Mycomya tenuis</i>	1999	1999	2	1
<i>Mycomya trivittata</i>	1992	1999	2	2
<i>Mycomya tumida</i>	1992	1992	1	1
<i>Mycomya vittiventris</i>	1999	1999	4	2
<i>Mycomya winnertzi</i>	1992	1992	2	2
<i>Mycomya affinis</i>	1992	1992	1	1
<i>Mycomya fimbriata</i>	1978	1978	2	2
<i>Neoempheria pictipennis</i>	1992	1999	2	2
<i>Neoempheria winnertzi</i>	1999	1999	1	1
<i>Acnemia longipes</i>	1991	1991	1	1
<i>Acnemia nitidicollis</i>	1992	2003	21	6
<i>Allocotocera pulchella</i>	1999	1999	4	1
<i>Anaclileia dispar</i>	1976	1976	1	1
<i>Coelophthinia thoracica</i>	1992	1992	2	2
<i>Neuratelia nemoralis</i>	1993	2008	4	3
<i>Neuratelia nigricornis</i>	2003	2010	2	2
<i>Phthinia humilis</i>	1999	1999	1	1
<i>Phthinia mira</i>	1999	1999	1	1
<i>Polylepta guttiventris</i>	1999	1999	4	1
<i>Sciophila lutea</i>	1923	1923	1	1
<i>Speolepta leptogaster</i>	2010	2010	1	1
<b>Sciaridae</b>				
<i>Corynoptera minima</i>	2006	2006	1	1
<i>Phytosciara flavipes</i>	1992	2009	19	8
<i>Schwenckfeldina carbonaria</i>	2009	2010	2	2

Family/Species	Year of first record	Year of latest record	Number of Records	No. Hectads
<i>Sciara hemerobioides</i>	1991	2012	8	6
<i>Trichosia glabra</i>	1999	1999	2	1
<i>Trichosia morio</i>	1999	1999	7	4
<i>Trichosia splendens</i>	1999	1999	12	3
<i>Zygoneura sciarina</i>	1999	2011	4	2
<b>Cecidomyiidae</b>				
<i>Wachtliella persicariae</i>	2014	2014	1	1
<i>Contarinia pisi</i>	2006	2006	1	1
<i>Contarinia tiliarum</i>	2013	2013	1	1
<i>Bayeriola thymicola</i>	2011	2011	1	1
<i>Dasineura fraxini</i>	2013	2013	1	1
<i>Dasineura kiefferiana</i>	2009	2009	1	1
<i>Dasineura pustulans</i>	2011	2013	3	3
<i>Dasineura ulmaria</i>	2011	2013	4	2
<i>Dasineura urticae</i>	2011	2013	6	2
<i>Hartigiola annulipes</i>	2010	2014	7	6
<i>Iteomyia capreae</i>	2010	2010	1	1
<i>Iteomyia major</i>	2013	2013	1	1
<i>Jaapiella veronicae</i>	1990	2013	6	4
<i>Taxomyia taxi</i>	2010	2011	4	2
<b>Psychodidae</b>				
<i>Clytocerus ocellaris</i>	1999	2012	5	2
<i>Pericoma blandula</i>	1999	1999	7	3
<i>Pericoma pseudoexquisita</i>	1999	1999	2	1
<i>Pericoma trivialis</i>	2012	2012	3	1
<i>Pericoma fuliginosa</i>	1999	1999	5	2
<i>Tinearia alternata</i>	2008	2008	1	1
<i>Feuerborniella obscura</i>	2012	2012	1	1
<i>Panimerus denticulatus</i>	1999	1999	2	1
<i>Philosepedon humeralis</i>	1920	1920	1	1
<i>Telmatoscopus ambiguus</i>	1999	1999	4	2
<i>Telmatoscopus vaillanti</i>	1999	1999	2	1
<i>Trichomyia urbica</i>	2003	2003	2	1
<b>Trichoceridae</b>				
<i>Trichocera annulata</i>	1992	1994	9	9
<i>Trichocera maculipennis</i>	1963	1963	1	1
<i>Trichocera parva</i>	1992	1992	2	2
<i>Trichocera regelationis</i>	1963	2012	29	16
<i>Trichocera saltator</i>	1963	1992	14	7
<i>Trichocera hiemalis</i>	1992	2001	3	3
<i>Trichocera major</i>	1978	1992	4	4
<b>Anisopodidae</b>				
<i>Sylvicola cinctus</i>	1992	2002	12	8

Family/Species	Year of first record	Year of latest record	Number of Records	No. Hectads
<i>Sylvicola fenestralis</i>	1963	2012	17	9
<i>Sylvicola punctatus</i>	1963	2002	49	16
<i>Sylvicola zetterstedti</i>	2001	2001	2	1
<b>Mycetobiidae</b>				
<i>Mycetobia pallipes</i>	2002	2002	1	1
<b>Scatopsidae</b>				
<i>Anapausis soluta</i>	1999	1999	3	2
<i>Colobostema nigripenne</i>	1963	1963	1	1
<i>Thripomorpha bifida</i>	1999	1999	2	1
<i>Reichertella geniculata</i>	1999	1999	2	1
<i>Scatopse notata</i>	1963	1963	4	1
<b>Ptychopteridae</b>				
<i>Ptychoptera albimana</i>	1988	2012	70	27
<i>Ptychoptera contaminata</i>	1994	2012	15	6
<i>Ptychoptera lacustris</i>	1988	2012	22	12
<i>Ptychoptera minuta</i>	1963	2011	42	12
<i>Ptychoptera paludosa</i>	1988	1995	4	4
<i>Ptychoptera scutellaris</i>	1988	2008	11	7
<b>Dixidae</b>				
<i>Dixa dilatata</i>	1987	1992	4	3
<i>Dixa maculata</i>	1984	1984	1	1
<i>Dixa nebulosa</i>	1992	2001	2	2
<i>Dixa nubilipennis</i>	1992	1999	8	5
<i>Dixa puberula</i>	1992	1999	8	5
<i>Dixa submaculata</i>	1988	2007	3	2
<i>Dixella aestivalis</i>	1988	2002	10	6
<i>Dixella amphibia</i>	1988	1999	3	2
<i>Dixella filicornis</i>	1940	1940	1	1
<i>Dixella martinii</i>	1988	1992	5	4
<i>Dixella obscura</i>	1988	1988	1	1
<i>Dixella serotina</i>	1992	1992	2	2
<b>Chaoboridae</b>				
<i>Chaoborus crystallinus</i>	1963	1963	1	1
<i>Chaoborus flavicans</i>	2002	2002	1	1
<i>Mochlonyx fuliginosus</i>	1988	2002	4	3
<b>Culicidae</b>				
<i>Anopheles claviger</i>	1988	2001	4	4
<i>Aedes cinereus</i>	1976	1976	1	1
<i>Aedes punctor</i>	1999	2002	3	2
<i>Culex pipiens</i>	1963	2009	3	2
<i>Culiseta morsitans</i>	2001	2002	8	2
<i>Culiseta annulata</i>	2001	2013	7	3

Family/Species	Year of first record	Year of latest record	Number of Records	No. Hectads
<b>Thaumaleidae</b>				
<i>Thaumalea truncata</i>	1999	1999	1	1
<i>Thaumalea verralli</i>	1982	1992	3	3
<b>Simuliidae</b>				
<i>Simulium ornatum complex</i>	2007	2007	2	1
<i>Simulium cryophilum</i>	2007	2007	2	1
<i>Simulium lundstromi</i>	2001	2001	2	1
<i>Simulium variegatum</i>	2008	2008	4	1
<b>Ceratopogonidae</b>				
<i>Neurohelea luteitarsis</i>	1999	1999	2	1
<i>Schizhelea leucopeza</i>	1999	1999	2	1
<i>Serromyia femorata</i>	1963	1963	11	1
<i>Serromyia morio</i>	1999	1999	1	1
<i>Serromyia subinermis</i>	1999	1999	1	1
<i>Stilobezzia gracilis</i>	1999	1999	4	2
<i>Stilobezzia flavirostris</i>	1999	1999	2	1
<i>Culicoides obsoletus</i>	2012	2012	1	1
<i>Culicoides grisescens</i>	1963	1963	1	1
<i>Culicoides impunctatus</i>	1963	1963	11	1
<i>Culicoides heliophilus</i>	1963	1963	3	1
<i>Bezzia ornata</i>	1999	1999	2	1
<i>Bezzia pygmaea</i>	1999	1999	2	1
<i>Bezzia leucogaster</i>	1999	1999	2	1
<i>Palpomyia brachialis</i>	1999	1999	2	1
<i>Palpomyia distincta</i>	1999	1999	2	1
<i>Palpomyia flavipes</i>	1999	1999	5	3
<i>Palpomyia nigripes</i>	1999	1999	2	1
<i>Palpomyia serripes</i>	1999	1999	2	1
<i>Palpomyia spinipes</i>	1999	1999	2	1
<i>Dasyhelea dufouri</i>	1944	1944	1	1
<i>Dasyhelea saxicola</i>	1800	1993	7	3
<b>Chironomidae</b>				
<i>Chironomus longipes</i>	1961	1967	2	1
<i>Chironomus pilicornis</i>	1964	1964	1	1
<b>Xylophagidae</b>				
<i>Xylophagus ater</i>	1982	2012	60	18
<b>Athericidae</b>				
<i>Atherix ibis</i>	1900	2006	33	9
<i>Ibisia marginata</i>	1993	2008	12	4
<b>Rhagionidae</b>				
<i>Chrysopilus asiliformis</i>	1936	2005	10	6
<i>Chrysopilus cristatus</i>	1900	2013	156	37
<i>Chrysopilus erythrophthalmus</i>	2011	2011	1	1

Family/Species	Year of first record	Year of latest record	Number of Records	No. Hectads
<i>Rhagio lineola</i>	1902	2013	99	26
<i>Rhagio notatus</i>	1986	2004	10	6
<i>Rhagio scolopaceus</i>	1900	2013	149	40
<i>Rhagio tringarius</i>	1902	2012	52	24
<i>Symphoromyia crassicornis</i>	1928	2012	19	6
<i>Ptiolina nigra</i>	1963	2011	5	2
<i>Ptiolina obscura</i>	1900	1999	7	4
<i>Spania nigra</i>	1984	2013	3	2
<b>Tabanidae</b>				
<i>Chrysops caecutiens</i>	1893	2005	38	9
<i>Chrysops relictus</i>	1911	2013	22	9
<i>Chrysops sepulchralis</i>	2014	2014	2	1
<i>Chrysops viduatus</i>	1999	2006	4	1
<i>Haematopota bigoti</i>	1998	2005	4	3
<i>Haematopota crassicornis</i>	1901	2013	41	19
<i>Haematopota pluvialis</i>	1800	2013	198	48
<i>Atylotus fulvus</i>	1990	1997	4	3
<i>Hybomitra bimaculata</i>	1919	1997	9	6
<i>Hybomitra distinguenda</i>	1902	2013	17	11
<i>Hybomitra micans</i>	1904	2012	15	5
<i>Hybomitra montana</i>	1910	2009	22	12
<i>Tabanus cordiger</i>	1901	2005	15	8
<i>Tabanus sudeticus</i>	1898	2013	56	26
<b>Stratiomyidae</b>				
<i>Beris chalybata</i>	1911	2012	48	21
<i>Beris clavipes</i>	1935	2012	15	10
<i>Beris fuscipes</i>	1943	2007	20	14
<i>Beris geniculata</i>	1917	2012	27	15
<i>Beris morrisii</i>	1983	2004	4	4
<i>Beris vallata</i>	1900	2012	95	25
<i>Chorisops tibialis</i>	1901	2002	9	6
<i>Nemotelus nigrinus</i>	1982	1999	6	2
<i>Nemotelus notatus</i>	1950	2012	32	11
<i>Nemotelus uliginosus</i>	1926	2009	34	12
<i>Neopachygaster meromelas</i>	2006	2011	2	1
<i>Pachygaster leachii</i>	1993	1993	1	1
<i>Chloromyia formosa</i>	1900	2013	151	40
<i>Microchrysa cyaneiventris</i>	1917	2012	41	21
<i>Microchrysa flavicornis</i>	1890	2013	42	22
<i>Microchrysa polita</i>	1911	2013	25	12
<i>Sargus bipunctatus</i>	1918	1998	15	8
<i>Sargus cuprarius</i>	1901	1957	7	4
<i>Sargus flavipes</i>	1903	2002	21	10

Family/Species	Year of first record	Year of latest record	Number of Records	No. Hectads
<i>Sargus iridatus</i>	1900	2012	41	14
<i>Oxycera dives</i>	2003	2009	13	2
<i>Oxycera fallenii</i>	2007	2007	2	1
<i>Oxycera morrisii</i>	2003	2006	2	2
<i>Oxycera nigricornis</i>	1999	2008	7	2
<i>Oxycera pardalina</i>	1993	2011	29	9
<i>Oxycera pygmaea</i>	1984	2009	12	5
<i>Oxycera rara</i>	1999	1999	4	1
<i>Oxycera trilineata</i>	1961	1999	15	3
<i>Oplodontha viridula</i>	1995	2003	25	4
<i>Stratiomys potamida</i>	2003	2007	4	3
<b>Acroceridae</b>				
<i>Acrocera orbiculus</i>	1919	2012	9	7
<i>Ogcodes gibbosus</i>	1999	1999	1	1
<b>Bombyliidae</b>				
<i>Bombylius canescens</i>	1919	1996	8	4
<i>Bombylius major</i>	1899	2014	82	28
<i>Villa modesta</i>	2012	2012	2	1
<i>Phthiria pulicaria</i>	1978	1999	20	3
<b>Therevidae</b>				
<i>Acrosathe annulata</i>	1900	2014	34	4
<i>Clorismia rustica</i>	1986	2007	27	5
<i>Dialineura anilis</i>	1993	2012	20	3
<i>Spiriverpa lunulata</i>	1998	2013	51	6
<i>Thereva bipunctata</i>	1996	1999	10	2
<i>Thereva nobilitata</i>	1912	2013	43	15
<i>Thereva plebeja</i>	1942	1942	1	1
<b>Scenopinidae</b>				
<i>Scenopinus niger</i>	1919	1923	2	1
<b>Asilidae</b>				
<i>Dysmachus trigonus</i>	1911	2009	47	10
<i>Eutolmus rufibarbis</i>	2010	2013	2	2
<i>Machimus atricapillus</i>	1991	2013	12	8
<i>Machimus cingulatus</i>	1999	2009	4	3
<i>Machimus cowini</i>	2006	2006	1	1
<i>Neoitamus cyanurus</i>	1902	2005	23	8
<i>Pamponerus germanicus</i>	1956	2011	26	5
<i>Philonicus albiceps</i>	1900	2013	53	6
<i>Leptarthrus brevirostris</i>	1901	2007	38	14
<i>Leptogaster cylindrica</i>	1906	2006	9	5
<i>Leptogaster guttiventris</i>	1913	2001	8	5
<i>Dioctria cothurnata</i>	1996	2012	18	8
<i>Dioctria oelandica</i>	1912	2012	41	10

Family/Species	Year of first record	Year of latest record	Number of Records	No. Hectads
<i>Dioctria rufipes</i>	1892	2012	57	16
<i>Lasiopogon cinctus</i>	1974	1976	2	1
<b>Atelestidae</b>				
<i>Atelestus pulicarius</i>	1984	1984	2	1
<b>Hybotidae</b>				
<i>Hybos culiciformis</i>	1900	2012	135	39
<i>Hybos femoratus</i>	1927	2013	117	39
<i>Hybos grossipes</i>	1923	2008	3	3
<i>Leptopeza flavipes</i>	1982	2007	8	4
<i>Ocydromia glabricula</i>	1922	2012	153	34
<i>Ocydromia melanopleura</i>	1972	1991	3	2
<i>Oropezella sphenoptera</i>	1982	2002	38	5
<i>Euthyneura halidayi</i>	1988	2002	2	2
<i>Euthyneura myrtilli</i>	1963	2009	11	5
<i>Oedalea flavipes</i>	1934	2002	15	6
<i>Oedalea holmgreni</i>	1931	2007	24	9
<i>Oedalea stigmatella</i>	1984	2009	11	5
<i>Oedalea tibialis</i>	1961	1984	3	2
<i>Oedalea zetterstedti</i>	2002	2003	2	2
<i>Bicellaria halterata</i>	2002	2002	1	1
<i>Bicellaria intermedia</i>	1972	2009	17	10
<i>Bicellaria nigra</i>	1962	2009	12	5
<i>Bicellaria nigrata</i>	1999	1999	2	1
<i>Bicellaria pilosa</i>	1963	1999	4	3
<i>Bicellaria simplicipes</i>	1984	2001	4	2
<i>Bicellaria spuria</i>	1991	1999	9	6
<i>Bicellaria subpilosa</i>	1940	2008	14	4
<i>Bicellaria sulcata</i>	1990	2012	13	5
<i>Bicellaria vana</i>	1931	2009	93	31
<i>Trichina bilobata</i>	2001	2001	1	1
<i>Trichina clavipes</i>	1931	2007	50	19
<i>Trichina elongata</i>	2002	2002	4	3
<i>Trichina opaca</i>	2001	2003	4	3
<i>Trichina pallipes</i>	1999	1999	1	1
<i>Trichinomyia flavipes</i>	1967	2001	28	11
<i>Crossopalpus curvipes</i>	1999	2009	5	2
<i>Crossopalpus minimus</i>	2001	2001	1	1
<i>Crossopalpus nigratellus</i>	1932	1938	2	1
<i>Drapetis exilis</i>	1993	1993	2	1
<i>Drapetis pusilla</i>	2007	2007	2	1
<i>Stilpon lunatus</i>	1953	1953	1	1
<i>Stilpon nubilus</i>	1913	2009	10	6
<i>Stilpon sublunatus</i>	1931	2008	17	6

Family/Species	Year of first record	Year of latest record	Number of Records	No. Hectads
<i>Platypalpus agilis</i>	1931	2002	39	17
<i>Platypalpus albifacies</i>	1944	1996	5	2
<i>Platypalpus annulatus</i>	1974	2008	19	7
<i>Platypalpus annulipes</i>	1921	2007	10	8
<i>Platypalpus articulatoides</i>	2008	2008	1	1
<i>Platypalpus calceatus</i>	1934	2010	23	10
<i>Platypalpus candicans</i>	1922	2007	35	14
<i>Platypalpus ciliaris</i>	1972	2002	33	14
<i>Platypalpus clarandus</i>	1927	1999	12	5
<i>Platypalpus cothurnatus</i>	1984	2007	6	3
<i>Platypalpus cryptospina</i>	1920	1920	1	1
<i>Platypalpus cursitans</i>	1984	2006	12	8
<i>Platypalpus divisus</i>	1984	1984	3	1
<i>Platypalpus excisus</i>	1970	1986	3	1
<i>Platypalpus exilis</i>	1984	2002	18	7
<i>Platypalpus flavicornis</i>	2000	2000	1	1
<i>Platypalpus interstinctus</i>	1984	2008	7	5
<i>Platypalpus longicornis</i>	1932	2010	95	31
<i>Platypalpus longiseta</i>	1963	2007	22	11
<i>Platypalpus luteolus</i>	2007	2007	3	1
<i>Platypalpus luteus</i>	1931	2007	12	8
<i>Platypalpus maculipes</i>	1982	2008	12	7
<i>Platypalpus major</i>	1979	2007	35	9
<i>Platypalpus melancholicus</i>	1999	2008	5	2
<i>Platypalpus minutus</i>	1931	2012	58	21
<i>Platypalpus nigratarsis</i>	1931	2003	74	28
<i>Platypalpus notatus</i>	1927	2010	42	20
<i>Platypalpus optivus</i>	1984	2007	8	5
<i>Platypalpus pallidicornis</i>	1999	2009	3	2
<i>Platypalpus pallidiventris</i>	1920	2012	109	35
<i>Platypalpus pallipes</i>	1982	2012	8	6
<i>Platypalpus parvicauda</i>	1970	1999	5	4
<i>Platypalpus pectoralis</i>	1982	2005	8	3
<i>Platypalpus pictitarsis</i>	1936	2002	9	5
<i>Platypalpus pseudofulvipes</i>	1978	2007	14	12
<i>Platypalpus stabilis</i>	1988	1988	1	1
<i>Platypalpus strigifrons</i>	1999	2012	5	2
<i>Platypalpus subtilis</i>	1999	2008	13	3
<i>Platypalpus tonsus</i>	1970	2007	5	3
<i>Platypalpus verralli</i>	1929	2010	15	7
<i>Symbalophthalmus dissimilis</i>	1938	1938	1	1
<i>Symbalophthalmus fuscitarsis</i>	1978	1985	5	4

Family/Species	Year of first record	Year of latest record	Number of Records	No. Hectads
<i>Tachydromia acklandi</i>	1999	2009	50	9
<i>Tachydromia aemula</i>	1903	2014	91	27
<i>Tachydromia arrogans</i>	1963	1987	6	4
<i>Tachydromia calcarata</i>	2004	2005	5	1
<i>Tachydromia costalis</i>	1936	2005	37	9
<i>Tachydromia edenensis</i>	2000	2000	6	2
<i>Tachydromia halidayi</i>	1963	2011	45	10
<i>Tachydromia morio</i>	1929	2009	91	17
<i>Tachydromia umbrarum</i>	1914	2012	45	18
<i>Tachydromia woodi</i>	2000	2008	10	5
<i>Tachypeza heeri</i>	1984	1984	2	1
<i>Tachypeza nubila</i>	1934	2014	89	25
<i>Chersodromia alata</i>	1999	1999	6	1
<i>Chersodromia cursitans</i>	1987	2009	10	3
<i>Chersodromia hirta</i>	1999	1999	2	1
<i>Chersodromia incana</i>	2000	2013	3	2
<b>Empididae</b>				
<i>Clinocera fontinalis</i>	1963	2012	48	17
<i>Clinocera nigra</i>	1982	2009	6	5
<i>Clinocera stagnalis</i>	1929	2012	57	25
<i>Clinocera wesmaeli</i>	1963	2009	4	3
<i>Dolichocephala engeli</i>	?	?	?	?
<i>Dolichocephala guttata</i>	1963	2011	29	19
<i>Dolichocephala irrorata</i>	1917	2009	36	20
<i>Dolichocephala oblongoguttata</i>	1999	2013	9	3
<i>Dolichocephala ocellata</i>	1988	1999	3	2
<i>Kowarzia bipunctata</i>	2002	2010	9	7
<i>Kowarzia tenella</i>	2009	2009	1	1
<i>Wiedemannia bistigma</i>	1963	2008	12	7
<i>Wiedemannia insularis</i>	2008	2008	2	1
<i>Empis lucida</i>	1963	2002	10	6
<i>Empis verralli</i>	1937	2011	34	13
<i>Empis albinervis</i>	1980	1999	7	2
<i>Empis hyalipennis</i>	1982	1982	1	1
<i>Empis vitripennis</i>	1984	1984	1	1
<i>Empis aestiva</i>	1931	2007	34	13
<i>Empis caudatula</i>	1963	2009	2	2
<i>Empis chioptera</i>	1920	2002	18	13
<i>Empis nigripes</i>	1962	2007	52	17
<i>Empis nuntia</i>	1963	2011	17	10
<i>Empis pennipes</i>	1988	2007	3	2
<i>Empis planetica</i>	1981	2003	18	7
<i>Empis rufiventris</i>	1984	1984	1	1

Family/Species	Year of first record	Year of latest record	Number of Records	No. Hectads
<i>Empis tessellata</i>	1900	2013	57	22
<i>Empis livida</i>	1900	2013	95	27
<i>Empis grisea</i>	1984	1987	3	2
<i>Empis femorata</i>	1962	2007	5	3
<i>Empis scotica</i>	1982	2000	2	2
<i>Empis tumida</i>	1988	1988	1	1
<i>Empis borealis</i>	1961	2013	25	7
<i>Empis opaca</i>	1918	2007	30	17
<i>Empis aemula</i>	1999	1999	2	1
<i>Empis concolor</i>	1985	2007	4	2
<i>Empis digramma</i>	1942	2007	14	10
<i>Empis laetabilis</i>	1984	2002	5	2
<i>Empis lutea</i>	1922	2008	29	6
<i>Empis punctata</i>	1962	2012	55	19
<i>Empis stercorea</i>	1918	2012	45	20
<i>Empis trigramma</i>	1900	2012	33	13
<i>Hilara albipennis</i>	1938	2002	8	5
<i>Hilara albiventris</i>	1982	2008	12	5
<i>Hilara anglodanica</i>	1962	2010	3	3
<i>Hilara apta</i>	1933	2008	6	4
<i>Hilara beckeri</i>	1999	2000	3	2
<i>Hilara biseta</i>	1982	2008	5	4
<i>Hilara bistrata</i>	1961	1961	1	1
<i>Hilara brevistyla</i>	1985	1985	1	1
<i>Hilara brevivittata</i>	1932	1932	1	1
<i>Hilara canescens</i>	1984	2008	20	10
<i>Hilara chorica</i>	1931	2012	153	37
<i>Hilara clavipes</i>	1982	2012	4	3
<i>Hilara clypeata</i>	1921	1979	3	3
<i>Hilara cornicula</i>	1984	2008	23	12
<i>Hilara curtisi</i>	1985	1985	1	1
<i>Hilara diversipes</i>	1999	1999	1	1
<i>Hilara flavipes</i>	1931	2007	19	11
<i>Hilara fulvibarba</i>	1974	2012	26	4
<i>Hilara fuscipes</i>	1931	2008	19	9
<i>Hilara galactoptera</i>	1974	2002	10	5
<i>Hilara hirtipes</i>	1961	1991	5	4
<i>Hilara intermedia</i>	1972	1991	2	2
<i>Hilara interstincta</i>	1963	2003	10	8
<i>Hilara litorea</i>	1934	2012	80	30
<i>Hilara longivittata</i>	1999	2000	3	2
<i>Hilara lugubris</i>	1987	1987	2	1
<i>Hilara lundbecki</i>	1967	1999	30	7

Family/Species	Year of first record	Year of latest record	Number of Records	No. Hectads
<i>Hilara lurida</i>	1979	1982	3	2
<i>Hilara manicata</i>	1972	2008	17	8
<i>Hilara maura</i>	1921	2012	68	30
<i>Hilara monedula</i>	1965	2010	31	13
<i>Hilara morata</i>	1982	1999	6	3
<i>Hilara nigrina</i>	1982	2008	12	8
<i>Hilara nigrohirta</i>	1973	1973	1	1
<i>Hilara nitidula</i>	1962	1962	1	1
<i>Hilara obscura</i>	1931	2009	99	26
<i>Hilara primula</i>	1988	1988	1	1
<i>Hilara pseudochorica</i>	2005	2005	2	1
<i>Hilara quadrivittata</i>	1935	2008	35	16
<i>Hilara rejecta</i>	1978	2002	10	5
<i>Hilara setosa</i>	2004	2004	1	1
<i>Hilara subpollinosa</i>	2007	2012	3	2
<i>Hilara thoracica</i>	1982	2007	11	5
<i>Rhamphomyia albohirta</i>	1961	2012	36	16
<i>Rhamphomyia longipes</i>	1931	2012	20	9
<i>Rhamphomyia erythrophthalma</i>	1932	2003	28	16
<i>Rhamphomyia gibba</i>	1982	2001	3	3
<i>Rhamphomyia hirsutipes</i>	1963	2003	3	2
<i>Rhamphomyia caliginosa</i>	1988	1988	1	1
<i>Rhamphomyia culicina</i>	1982	1982	3	2
<i>Rhamphomyia flava</i>	1923	2002	24	7
<i>Rhamphomyia lamellata</i>	1982	1999	3	2
<i>Rhamphomyia nigripennis</i>	1931	2009	45	18
<i>Rhamphomyia sciarina</i>	1937	1986	7	6
<i>Rhamphomyia umbripennis</i>	1935	2012	30	12
<i>Rhamphomyia variabilis</i>	1963	2013	18	6
<i>Rhamphomyia hybotina</i>	1963	2007	32	11
<i>Rhamphomyia anomalipennis</i>	1931	2010	14	9
<i>Rhamphomyia crassirostris</i>	1925	2008	47	18
<i>Rhamphomyia maculipennis</i>	1999	1999	2	1
<i>Rhamphomyia albipennis</i>	1940	2002	16	5
<i>Rhamphomyia atra</i>	2002	2002	1	1
<i>Rhamphomyia barbata</i>	1957	1985	3	2
<i>Rhamphomyia caesia</i>	1982	2013	4	3
<i>Rhamphomyia curvula</i>	1965	2002	3	2
<i>Rhamphomyia geniculata</i>	1931	2008	7	4
<i>Rhamphomyia micropyga</i>	2002	2002	1	1
<i>Rhamphomyia obscura</i>	1979	2012	4	2
<i>Rhamphomyia pilifer</i>	1933	2008	14	10
<i>Rhamphomyia simplex</i>	1967	1999	6	2

Family/Species	Year of first record	Year of latest record	Number of Records	No. Hectads
<i>Rhamphomyia tarsata</i>	1970	2013	22	10
<i>Rhamphomyia tibiella</i>	1935	2012	15	11
<i>Rhamphomyia laevipes</i>	1992	1992	1	1
<i>Rhamphomyia morio</i>	1963	1963	3	1
<i>Rhamphomyia plumipes</i>	1935	2003	5	3
<i>Rhamphomyia spinipes</i>	1974	1982	3	1
<i>Rhamphomyia stigmosa</i>	1922	2012	30	15
<i>Rhamphomyia subcinerascens</i>	1963	2002	12	5
<i>Rhamphomyia sulcata</i>	1916	2012	50	19
<i>Rhamphomyia sulcatella</i>	1999	1999	1	1
<i>Rhamphomyia tibialis</i>	2001	2012	6	3
<i>Chelifera astigma</i>	2007	2007	2	1
<i>Chelifera diversicauda</i>	1963	2008	9	5
<i>Chelifera flavella</i>	2004	2004	1	1
<i>Chelifera pectinicauda</i>	1984	1987	2	2
<i>Chelifera precabunda</i>	1982	2008	10	7
<i>Chelifera precatatoria</i>	1931	2012	59	27
<i>Chelifera stigmatica</i>	1972	1972	1	1
<i>Chelifera subangusta</i>	1982	1982	2	1
<i>Chelifera trapezina</i>	1939	2009	9	8
<i>Chelipoda albiseta</i>	1980	2010	20	9
<i>Chelipoda vocatoria</i>	1941	2004	11	7
<i>Hemerodromia adulatoria</i>	1999	1999	1	1
<i>Hemerodromia baetica</i>	1982	2007	7	5
<i>Hemerodromia oratoria</i>	2000	2009	3	3
<i>Hemerodromia raptoria</i>	1984	2000	8	4
<i>Hemerodromia unilineata</i>	1920	2007	13	8
<i>Phyllodromia melanocephala</i>	1931	2012	68	25
<i>Ragas unica</i>	1982	2006	3	2
<i>Gloma fuscipennis</i>	1987	1999	4	2
<i>Heleodromia immaculata</i>	1931	2002	14	9
<i>Trichopeza longicornis</i>	1920	2010	54	12
<b>Microphoridae</b>				
<i>Microphor anomalus</i>	1995	1995	1	1
<i>Microphor crassipes</i>	2002	2007	4	3
<i>Microphor holosericeus</i>	1932	2002	17	6
<b>Dolichopodidae</b>				
<i>Achalcus cinereus</i>	1987	1987	1	1
<i>Achalcus flavicollis</i>	1984	2001	5	4
<i>Argyra argentina</i>	1993	2012	12	8
<i>Argyra argyria</i>	1966	2012	22	13
<i>Argyra atriceps</i>	1990	2008	5	2
<i>Argyra diaphana</i>	1984	2013	27	13

Family/Species	Year of first record	Year of latest record	Number of Records	No. Hectads
<i>Argyra elongata</i>	1984	2012	6	4
<i>Argyra ilonae</i>	1989	2008	5	2
<i>Argyra leucocephala</i>	1979	2013	43	16
<i>Argyra perplexa</i>	1983	2009	11	7
<i>Argyra vestita</i>	1979	1999	3	1
<i>Chrysotus blepharosceles</i>	1988	1999	5	4
<i>Chrysotus cilipes</i>	1988	2012	12	9
<i>Chrysotus collini</i>	2010	2010	1	1
<i>Chrysotus cupreus</i>	1979	2004	7	4
<i>Chrysotus femoratus</i>	2012	2012	1	1
<i>Chrysotus gramineus</i>	1950	2012	112	25
<i>Chrysotus laesus</i>	1999	1999	3	1
<i>Chrysotus neglectus</i>	1923	2006	9	6
<i>Chrysotus obscuripes</i>	1930	1999	6	4
<i>Chrysotus palustris</i>	1999	2009	5	3
<i>Chrysotus suavis</i>	1989	2009	3	3
<i>Chrysotus verralli</i>	1930	1930	1	1
<i>Diaphorus nigricans</i>	1978	1999	7	4
<i>Diaphorus oculatus</i>	1991	2007	12	5
<i>Dolichopus andalusiacus</i>	2003	2003	1	1
<i>Dolichopus atratus</i>	1967	2013	63	20
<i>Dolichopus atripes</i>	1980	2013	23	12
<i>Dolichopus brevipennis</i>	1978	2009	26	11
<i>Dolichopus caligatus</i>	1993	1993	1	1
<i>Dolichopus campestris</i>	1994	2006	6	5
<i>Dolichopus claviger</i>	1999	2012	2	2
<i>Dolichopus clavipes</i>	1923	2009	12	7
<i>Dolichopus discifer</i>	1976	2013	52	18
<i>Dolichopus festivus</i>	1999	2009	4	3
<i>Dolichopus griseipennis</i>	1963	2007	15	10
<i>Dolichopus latilimbatus</i>	1993	2009	10	6
<i>Dolichopus lepidus</i>	1950	2013	19	12
<i>Dolichopus linearis</i>	1999	1999	1	1
<i>Dolichopus longicornis</i>	1988	2012	34	13
<i>Dolichopus longitarsis</i>	1979	1988	6	5
<i>Dolichopus nitidus</i>	1984	2003	9	4
<i>Dolichopus notatus</i>	1998	1998	1	1
<i>Dolichopus nubilus</i>	1923	2009	30	12
<i>Dolichopus pennatus</i>	1964	2004	23	11
<i>Dolichopus phaeopus</i>	2009	2009	1	1
<i>Dolichopus picipes</i>	1987	2003	11	10
<i>Dolichopus planitarsis</i>	1950	1984	3	2
<i>Dolichopus plumipes</i>	1963	2013	112	42

Family/Species	Year of first record	Year of latest record	Number of Records	No. Hectads
<i>Dolichopus popularis</i>	1964	2013	52	16
<i>Dolichopus rupestris</i>	1950	2006	27	11
<i>Dolichopus sabinus</i>	1923	2009	2	2
<i>Dolichopus signatus</i>	1988	2013	9	5
<i>Dolichopus simplex</i>	1963	2013	30	13
<i>Dolichopus subpennatus</i>	1987	2009	24	10
<i>Dolichopus trivialis</i>	1980	2012	78	25
<i>Dolichopus unguatus</i>	1964	2013	112	34
<i>Dolichopus urbanus</i>	1987	2013	18	12
<i>Dolichopus vitripennis</i>	1963	2006	34	16
<i>Dolichopus wahlbergi</i>	1981	2012	10	8
<i>Dolichopus diadema</i>	1961	2009	9	6
<i>Hercostomus aerosus</i>	1979	2012	102	21
<i>Hercostomus angustifrons</i>	1922	2004	6	3
<i>Hercostomus assimilis</i>	1984	2007	6	4
<i>Hercostomus blankaartensis</i>	2007	2007	4	1
<i>Hercostomus brevicornis</i>	1982	2005	2	2
<i>Hercostomus celer</i>	1984	2009	20	8
<i>Hercostomus cupreus</i>	1962	2013	69	20
<i>Hercostomus metallicus</i>	1982	2013	27	10
<i>Hercostomus chetifer</i>	2002	2010	4	3
<i>Hercostomus fulvicaudis</i>	1970	1999	5	3
<i>Hercostomus germanus</i>	1984	2012	11	6
<i>Hercostomus gracilis</i>	1992	1999	7	1
<i>Hercostomus nanus</i>	1984	2010	4	2
<i>Hercostomus nigripennis</i>	1984	2007	31	10
<i>Hercostomus nigriplantis</i>	1999	2012	4	2
<i>Poecilobothrus nobilitatus</i>	1999	2007	8	3
<i>Sybistroma crinipes</i>	1999	1999	5	3
<i>Sybistroma discipes</i>	1984	1984	1	1
<i>Sybistroma obscurellum</i>	1981	2012	49	13
<i>Tachytrechus consobrinus</i>	2003	2003	2	1
<i>Tachytrechus insignis</i>	1999	1999	8	2
<i>Tachytrechus notatus</i>	1999	1999	17	12
<i>Aphrosylus celtiber</i>	1999	2006	3	2
<i>Aphrosylus ferox</i>	1990	1999	3	2
<i>Hydrophorus albiceps</i>	1989	1989	1	1
<i>Hydrophorus bipunctatus</i>	1992	2005	2	2
<i>Hydrophorus litoreus</i>	2004	2004	1	1
<i>Hydrophorus nebulosus</i>	1963	2009	18	6
<i>Hydrophorus oceanus</i>	1935	2013	33	10
<i>Hydrophorus praecox</i>	1999	2013	8	3
<i>Liancalus virens</i>	1960	2012	26	15

Family/Species	Year of first record	Year of latest record	Number of Records	No. Hectads
<i>Machaerium maritimae</i>	1922	2009	16	7
<i>Scellus notatus</i>	1987	2009	2	2
<i>Schoenophilus versutus</i>	1992	2010	4	2
<i>Thinophilus flavipalpis</i>	1923	1940	3	1
<i>Thinophilus ruficornis</i>	1976	1979	3	1
<i>Medetera abstrusa</i>	2012	2012	2	1
<i>Medetera dendrobaena</i>	1976	1979	3	2
<i>Medetera flavipes</i>	2002	2002	1	1
<i>Medetera jacula</i>	1985	1985	1	1
<i>Medetera micacea</i>	1985	1985	1	1
<i>Medetera muralis</i>	1963	1994	3	3
<i>Medetera petrophila</i>	2001	2001	1	1
<i>Medetera petrophiloides</i>	1979	2012	7	2
<i>Medetera saxatilis</i>	2009	2009	1	1
<i>Medetera truncorum</i>	1979	2009	10	5
<i>Systemus bipartitus</i>	2007	2007	2	1
<i>Systemus pallipes</i>	2002	2003	3	2
<i>Systemus scholtzii</i>	2002	2002	1	1
<i>Thrypticus bellus</i>	1999	1999	2	1
<i>Thrypticus pollinosus</i>	1994	1995	2	2
<i>Neurigona pallida</i>	2002	2007	3	2
<i>Neurigona suturalis</i>	1920	1920	1	1
<i>Rhaphium albomaculatum</i>	1963	2010	7	2
<i>Rhaphium antennatum</i>	2005	2005	1	1
<i>Rhaphium appendiculatum</i>	1982	2013	28	11
<i>Rhaphium auctum</i>	1988	2007	7	5
<i>Rhaphium brevicorne</i>	1999	1999	2	1
<i>Rhaphium caliginosum</i>	1993	2012	7	7
<i>Rhaphium commune</i>	1999	1999	1	1
<i>Rhaphium consobrinum</i>	1979	2013	11	4
<i>Rhaphium crassipes</i>	1983	2013	16	9
<i>Rhaphium elegantulum</i>	1984	1992	3	2
<i>Rhaphium fasciatum</i>	1950	2012	10	7
<i>Rhaphium fractum</i>	1994	1994	2	2
<i>Rhaphium gravipes</i>	1999	2005	10	4
<i>Rhaphium lanceolatum</i>	1999	1999	1	1
<i>Rhaphium laticorne</i>	1958	1958	1	1
<i>Rhaphium longicorne</i>	1950	2003	22	6
<i>Rhaphium monotrichum</i>	1999	1999	4	2
<i>Rhaphium nasutum</i>	1986	1986	1	1
<i>Rhaphium patulum</i>	2004	2005	4	2
<i>Rhaphium penicillatum</i>	1999	2005	8	4
<i>Rhaphium riparium</i>	1983	2005	15	7

Family/Species	Year of first record	Year of latest record	Number of Records	No. Hectads
<i>Rhaphium rivale</i>	1999	2005	3	2
<i>Sciapus contristans</i>	2012	2012	1	1
<i>Sciapus platypterus</i>	1979	2013	108	21
<i>Sciapus wiedemanni</i>	1994	2012	3	2
<i>Anepsiomyia flaviventris</i>	1999	2012	37	7
<i>Campsicnemus alpinus</i>	1963	2001	22	10
<i>Campsicnemus armatus</i>	1982	2009	7	5
<i>Campsicnemus compeditus</i>	1978	2003	9	6
<i>Campsicnemus curvipes</i>	1961	2013	113	31
<i>Campsicnemus loripes</i>	1963	2013	77	27
<i>Campsicnemus marginatus</i>	1984	2009	17	5
<i>Campsicnemus scambus</i>	1963	2013	63	20
<i>Chrysotimus flaviventris</i>	1994	1994	1	1
<i>Micromorphus albipes</i>	1950	2012	5	2
<i>Sympycnus aeneicoxa</i>	1980	2009	11	7
<i>Sympycnus cirripes</i>	1963	2010	9	6
<i>Sympycnus desoutteri</i>	1940	2013	173	35
<i>Sympycnus spiculatus</i>	1963	1999	16	9
<i>Syntormon aulicum</i>	1993	2009	2	2
<i>Syntormon bicolorellum</i>	1984	1999	14	7
<i>Syntormon denticulatum</i>	1992	2002	2	2
<i>Syntormon filiger</i>	1984	1999	2	1
<i>Syntormon fuscipes</i>	1984	2000	6	4
<i>Syntormon monile</i>	1940	1984	3	3
<i>Syntormon pallipes</i>	1957	2013	75	24
<i>Syntormon pumilum</i>	1984	2012	9	7
<i>Syntormon sulcipes</i>	1982	1991	2	2
<i>Syntormon tarsatum</i>	1999	1999	4	1
<i>Syntormon zelleri</i>	1991	2009	4	3
<i>Teuchophorus calcaratus</i>	1985	2008	10	3
<i>Teuchophorus monacanthus</i>	2008	2008	17	2
<i>Teuchophorus nigricosta</i>	1999	2010	4	1
<i>Teuchophorus simplex</i>	1983	1983	2	1
<i>Teuchophorus spinigerellus</i>	1999	2009	3	2
<i>Xanthochlorus ornatus</i>	1982	2012	13	8
<i>Xanthochlorus tenellus</i>	1988	2007	3	2
<b>Opetiidae</b>				
<i>Opetia nigra</i>	1937	2002	22	10
<b>Platypezidae</b>				
<i>Callomyia amoena</i>	1916	1999	6	2
<i>Callomyia dives</i>	2003	2003	2	1
<i>Microsania pectipennis</i>	1999	1999	2	1
<i>Paraplatypeza atra</i>	1938	1940	2	1

Family/Species	Year of first record	Year of latest record	Number of Records	No. Hectads
<i>Polyporivora ornata</i>	1939	2002	2	2
<i>Protoclythia modesta</i>	1982	1982	1	1
<b>Phoridae</b>				
<i>Anevrina thoracica</i>	1963	1963	2	1
<i>Diplonevra concinna</i>	1963	1963	1	1
<i>Diplonevra florescens</i>	1999	1999	2	1
<i>Gymnophora quartomollis</i>	1999	1999	2	1
<i>Megaselia brevicostalis</i>	2001	2001	1	1
<i>Megaselia ciliata</i>	1963	1963	1	1
<i>Megaselia flavicoxa</i>	1963	1963	1	1
<i>Megaselia fusciclava</i>	1963	1963	1	1
<i>Megaselia longicostalis</i>	1963	1976	4	2
<i>Megaselia pulicaria</i>	1963	1976	2	2
<i>Megaselia pumila</i>	1963	1963	4	1
<i>Megaselia scalaris</i>	2010	2010	2	2
<i>Megaselia sepulchralis</i>	1963	1963	1	1
<i>Megaselia sordida</i>	1963	1963	2	1
<i>Megaselia variana</i>	1963	1963	1	1
<i>Megaselia woodi</i>	1963	1976	2	2
<i>Phalacrotophora berlinensis</i>	1999	1999	2	1
<i>Phora atra</i>	1999	1999	2	1
<i>Phora penicillata</i>	1987	1987	1	1
<i>Phora stictica</i>	1963	1963	3	1
<i>Triphleba citreiformis</i>	1963	1963	1	1
<i>Triphleba gracilis</i>	1963	1963	1	1
<i>Triphleba intermedia</i>	1963	1963	1	1
<i>Triphleba nudipalpis</i>	1989	1989	1	1
<i>Triphleba opaca</i>	1963	1963	1	1
<b>Lonchopteridae</b>				
<i>Lonchoptera bifurcata</i>	1900	2012	44	23
<i>Lonchoptera lutea</i>	1921	2012	122	31
<i>Lonchoptera meijerei</i>	1800	2008	17	6
<i>Lonchoptera nigrociliata</i>	1800	2008	18	9
<i>Lonchoptera tristis</i>	1800	2002	27	15
<b>Syrphidae</b>				
<i>Anasimyia contracta</i>	1996	2012	15	7
<i>Anasimyia lineata</i>	1890	1999	25	12
<i>Arctophila superbiens</i>	1800	2013	56	25
<i>Baccha elongata</i>	1800	2013	51	20
<i>Brachyopa insensilis</i>	1995	2003	10	4
<i>Brachyopa pilosa</i>	2013	2013	1	1
<i>Brachyopa scutellaris</i>	1941	2007	14	9
<i>Brachypalpoides lentus</i>	1900	2011	36	10

Family/Species	Year of first record	Year of latest record	Number of Records	No. Hectads
<i>Brachypalpus laphriformis</i>	1922	2007	28	10
<i>Callicera aurata</i>	1963	1998	2	1
<i>Chalcosyrphus nemorum</i>	1988	2013	50	12
<i>Cheilosia albipila</i>	1939	2012	10	6
<i>Cheilosia albitarsis</i>	1890	2013	75	28
<i>Cheilosia antiqua</i>	1800	2004	25	13
<i>Cheilosia barbata</i>	1932	1993	3	3
<i>Cheilosia bergenstammi</i>	1900	2013	37	18
<i>Cheilosia chrysocoma</i>	1943	2001	11	4
<i>Cheilosia cynocephala</i>	1935	1987	2	2
<i>Cheilosia fraterna</i>	1800	2013	54	22
<i>Cheilosia grossa</i>	1890	2003	16	10
<i>Cheilosia illustrata</i>	1800	2014	96	34
<i>Cheilosia impressa</i>	1939	2010	7	5
<i>Cheilosia latifrons</i>	1940	2012	8	5
<i>Cheilosia longula</i>	1919	2002	8	4
<i>Cheilosia mutabilis</i>	1963	1963	1	1
<i>Cheilosia nebulosa</i>	1800	2003	9	6
<i>Cheilosia pagana</i>	1890	2013	54	21
<i>Cheilosia proxima</i>	1900	2009	25	11
<i>Cheilosia pubera</i>	1985	2013	14	7
<i>Cheilosia scutellata</i>	1940	1981	7	4
<i>Cheilosia soror</i>	1960	1989	2	2
<i>Cheilosia urbana</i>	1991	1991	1	1
<i>Cheilosia variabilis</i>	1942	2003	24	13
<i>Cheilosia vernalis</i>	1900	2012	28	18
<i>Cheilosia vicina</i>	1800	1999	15	6
<i>Cheilosia vulpina</i>	1890	1900	4	4
<i>Chrysogaster cemiteriorum</i>	1901	2003	27	15
<i>Chrysogaster solstitialis</i>	1890	2012	66	23
<i>Chrysogaster virescens</i>	1917	2003	18	9
<i>Chrysotoxum arcuatum</i>	1912	2012	68	24
<i>Chrysotoxum bicinctum</i>	1800	2012	68	25
<i>Chrysotoxum cautum</i>	1922	2002	4	3
<i>Chrysotoxum festivum</i>	1920	2012	20	8
<i>Criorhina asilica</i>	1930	1999	18	7
<i>Criorhina berberina</i>	1900	2007	37	12
<i>Criorhina floccosa</i>	1900	2003	18	11
<i>Criorhina ranunculi</i>	1943	2013	16	8
<i>Dasysyrphus albostratus</i>	1902	2013	31	17
<i>Dasysyrphus friuliensis</i>	1993	1993	1	1
<i>Dasysyrphus tricinctus</i>	1904	2002	22	14
<i>Dasysyrphus venustus</i>	1800	2012	56	23

Family/Species	Year of first record	Year of latest record	Number of Records	No. Hectads
<i>Didea alneti</i>	1920	1920	2	1
<i>Didea fasciata</i>	1917	2002	25	10
<i>Didea intermedia</i>	1800	1999	11	6
<i>Doros profuges</i>	1941	1947	5	2
<i>Epistrophe eligans</i>	1900	2012	33	19
<i>Epistrophe grossulariae</i>	1800	2010	58	22
<i>Epistrophe nitidicollis</i>	1900	1900	4	3
<i>Episyrrhus balteatus</i>	1800	2014	379	59
<i>Eriozona syrphoides</i>	1981	1998	5	3
<i>Eristalinus sepulchralis</i>	1918	2013	35	16
<i>Eristalinus aeneus</i>	1985	2003	9	6
<i>Eristalis abusivus</i>	1946	2012	41	19
<i>Eristalis arbustorum</i>	1800	2013	265	45
<i>Eristalis horticola</i>	1800	2014	181	48
<i>Eristalis nemorum</i>	1800	2013	105	36
<i>Eristalis intricarius</i>	1899	2014	222	47
<i>Eristalis pertinax</i>	1800	2014	468	57
<i>Eristalis rupium</i>	1900	2012	16	10
<i>Eristalis tenax</i>	1800	2014	231	52
<i>Eumerus funeralis</i>	1994	2010	5	4
<i>Eumerus ornatus</i>	1890	1999	20	3
<i>Eumerus sabulorum</i>	2013	2013	1	1
<i>Eumerus strigatus</i>	1890	1996	8	6
<i>Eupeodes bucculatus</i>	2007	2007	1	1
<i>Eupeodes corollae</i>	1890	2013	144	38
<i>Eupeodes latifasciatus</i>	1999	2010	4	3
<i>Eupeodes lundbecki</i>	2007	2007	2	1
<i>Eupeodes luniger</i>	1911	2012	83	28
<i>Eupeodes nielsenii</i>	1996	2002	2	2
<i>Eupeodes nitens</i>	2007	2007	2	1
<i>Ferdinandea cuprea</i>	1890	2013	63	17
<i>Helophilus hybridus</i>	1947	2013	57	22
<i>Helophilus pendulus</i>	1800	2014	539	56
<i>Helophilus trivittatus</i>	1929	2013	110	28
<i>Heringia heringi</i>	1800	1990	4	1
<i>Lejogaster metallina</i>	1890	2013	105	39
<i>Lejogaster tarsata</i>	1900	1995	12	5
<i>Leucozona glauca</i>	1800	2013	105	29
<i>Leucozona laternaria</i>	1800	2012	41	16
<i>Leucozona lucorum</i>	1800	2013	103	36
<i>Melangyna arctica</i>	1800	1999	12	9
<i>Melangyna barbifrons</i>	1895	1943	6	2
<i>Melangyna cincta</i>	1800	2002	17	10

Family/Species	Year of first record	Year of latest record	Number of Records	No. Hectads
<i>Melangyna compositarum</i>	1800	1956	12	6
<i>Melangyna labiatarum</i>	1925	1999	11	10
<i>Melangyna lasiophthalma</i>	1903	2013	43	21
<i>Melangyna quadrimaculata</i>	1800	2003	4	4
<i>Melangyna umbellatarum</i>	1800	2011	15	11
<i>Melanogaster aerea</i>	1890	2005	9	7
<i>Melanogaster hirtella</i>	1901	2013	123	37
<i>Melanostoma dubium</i>	1800	2004	5	5
<i>Melanostoma mellinum</i>	1800	2013	272	54
<i>Melanostoma scalare</i>	1800	2013	314	51
<i>Meliscaeva auricollis</i>	1963	2012	27	14
<i>Meliscaeva cinctella</i>	1800	2013	82	29
<i>Merodon equestris</i>	1890	2013	72	19
<i>Microdon mutabilis</i>	1800	2011	26	5
<i>Microdon myrmicae</i>	1990	2011	14	4
<i>Myathropa florea</i>	1901	2014	126	32
<i>Neoascia podagrica</i>	1890	2012	132	40
<i>Neoascia tenur</i>	1900	2013	83	27
<i>Neoascia geniculata</i>	1984	1996	5	4
<i>Neoascia meticulosa</i>	1937	2009	15	6
<i>Neoascia obliqua</i>	1984	2002	8	7
<i>Orthonевра brevicornis</i>	1800	2004	9	6
<i>Orthonевра geniculata</i>	2001	2012	3	3
<i>Orthonевра nobilis</i>	1943	1999	20	8
<i>Paragus haemorrhous</i>	1987	2013	11	6
<i>Paragus tibialis</i>	1922	1943	7	5
<i>Parasyrphus annulatus</i>	1890	2007	10	4
<i>Parasyrphus lineola</i>	1980	2002	3	3
<i>Parasyrphus malinellus</i>	1998	1998	3	2
<i>Parasyrphus nigrirarsis</i>	1995	2005	17	10
<i>Parasyrphus punctulatus</i>	1939	2002	12	9
<i>Parasyrphus vittiger</i>	1900	1996	11	8
<i>Parhelophilus consimilis</i>	2012	2012	2	1
<i>Parhelophilus versicolor</i>	1954	2013	5	5
<i>Pipiza austriaca</i>	1900	2004	12	9
<i>Pipiza bimaculata</i>	1890	2002	13	8
<i>Pipiza fenestrata</i>	1900	2001	7	3
<i>Pipiza lugubris</i>	1900	1950	6	4
<i>Pipiza luteitarsis</i>	1997	1997	2	2
<i>Pipiza noctiluca</i>	1941	2005	10	7
<i>Pipizella viduata</i>	1962	2012	70	18
<i>Pipizella virens</i>	2012	2012	4	4
<i>Platycheirus ambiguus</i>	1924	1994	5	3

Family/Species	Year of first record	Year of latest record	Number of Records	No. Hectads
<i>Platycheirus albimanus</i>	1901	2013	312	58
<i>Platycheirus angustatus</i>	1931	2012	58	26
<i>Platycheirus clypeatus</i>	1940	2013	95	32
<i>Platycheirus discimanus</i>	c.1900	c.1900	2	1
<i>Platycheirus europaeus</i>	1900	2003	4	3
<i>Platycheirus fulviventris</i>	1987	2007	31	9
<i>Platycheirus immarginatus</i>	1940	2004	14	11
<i>Platycheirus manicatus</i>	1800	2012	49	21
<i>Platycheirus melanopsis</i>	1876	1991	3	2
<i>Platycheirus nielsenii</i>	1928	2010	7	4
<i>Platycheirus occultus</i>	1982	2012	23	10
<i>Platycheirus peltatus</i>	1963	2012	29	12
<i>Platycheirus perpallidus</i>	1982	2003	5	3
<i>Platycheirus podagratus</i>	1965	2009	11	9
<i>Platycheirus ramsarensis</i>	1982	2013	39	20
<i>Platycheirus scambus</i>	1903	2007	36	17
<i>Platycheirus scutatus</i>	1800	2013	60	27
<i>Platycheirus splendidus</i>	1999	1999	2	1
<i>Platycheirus sticticus</i>	1925	1980	2	2
<i>Platycheirus tarsalis</i>	1924	1999	6	5
<i>Platycheirus granditarsus</i>	1900	2014	250	48
<i>Platycheirus rosarum</i>	1800	2014	61	31
<i>Pocota personata</i>	1991	1991	1	1
<i>Portevinia maculata</i>	1940	2013	35	16
<i>Rhingia campestris</i>	1800	2014	386	57
<i>Rhingia rostrata</i>	2013	2013	1	1
<i>Riponnensia splendens</i>	1901	2013	24	11
<i>Scaeva pyrastris</i>	1800	2013	83	30
<i>Scaeva selenitica</i>	1924	2012	13	8
<i>Sericomyia lappona</i>	1904	2013	61	23
<i>Sericomyia silentis</i>	1800	2013	331	58
<i>Sphaerophoria bankowskiae</i>	1999	2000	2	2
<i>Sphaerophoria fatarum</i>	1991	2012	2	2
<i>Sphaerophoria interrupta</i>	1890	2013	84	32
<i>Sphaerophoria philanthus</i>	1915	2013	48	22
<i>Sphaerophoria rueppellii</i>	1944	2012	10	4
<i>Sphaerophoria scripta</i>	1800	2013	56	20
<i>Sphaerophoria taeniata</i>	1935	1939	2	2
<i>Sphaerophoria virgata</i>	1988	1988	2	1
<i>Sphegina sibirica</i>	2003	2012	3	2
<i>Sphegina clunipes</i>	1800	2013	70	20
<i>Sphegina elegans</i>	1989	2013	35	16
<i>Sphegina verecunda</i>	1991	2004	6	6

Family/Species	Year of first record	Year of latest record	Number of Records	No. Hectads
<i>Syritta pipiens</i>	1800	2014	320	49
<i>Syrphus ribesii</i>	1800	2013	266	49
<i>Syrphus torvus</i>	1904	2013	75	30
<i>Syrphus vitripennis</i>	1800	2013	110	36
<i>Trichopsomyia flavitarsis</i>	1961	2006	37	17
<i>Tropidia scita</i>	1962	2006	7	5
<i>Volucella bombylans</i>	1800	2014	134	39
<i>Volucella pellucens</i>	1800	2014	216	46
<i>Xanthandrus comtus</i>	1917	2003	11	10
<i>Xanthogramma citrofasciatum</i>	1920	2010	7	4
<i>Xanthogramma pedissequum</i>	1890	2012	28	13
<i>Xylota abiens</i>	1955	2006	5	2
<i>Xylota florum</i>	1901	2009	25	10
<i>Xylota jakutorum</i>	1988	2013	40	12
<i>Xylota segnis</i>	1890	2013	214	44
<i>Xylota sylvarum</i>	1800	2012	75	25
<i>Xylota tarda</i>	1993	2007	5	2
<b>Pipunculidae</b>				
<i>Chalarus fimbriatus</i>	1982	1999	5	4
<i>Chalarus spurius</i>	1999	1999	3	1
<i>Jassidophaga beatricis</i>	1999	1999	2	1
<i>Jassidophaga pilosa</i>	1935	1965	5	2
<i>Jassidophaga fasciata</i>	1965	1965	1	1
<i>Jassidophaga villosa</i>	2002	2002	1	1
<i>Verrallia aucta</i>	1937	2002	10	5
<i>Cephalops aeneus</i>	1982	1999	5	3
<i>Cephalops obtusinervis</i>	2002	2002	1	1
<i>Cephalops varipes</i>	2002	2002	1	1
<i>Cephalops subultimus</i>	1984	1984	1	1
<i>Cephalosphaera furcata</i>	1984	1984	1	1
<i>Cephalosphaera germanica</i>	1999	1999	2	1
<i>Eudorylas coloratus</i>	1982	1999	2	2
<i>Eudorylas jenkinsi</i>	1982	1982	1	1
<i>Eudorylas montium</i>	1988	1999	3	2
<i>Eudorylas obliquus</i>	1999	2002	2	2
<i>Eudorylas subfascipes</i>	1999	1999	1	1
<i>Pipunculus campestris</i>	1931	2002	10	5
<i>Pipunculus tenuirostris</i>	2002	2002	1	1
<i>Pipunculus lenis</i>	1937	2002	3	3
<i>Pipunculus violovitshii</i>	1988	1988	1	1
<i>Dorylomorpha xanthopus</i>	1932	1999	5	2
<i>Dorylomorpha maculata</i>	1982	1996	4	3
<i>Tomosvaryella cilitarsis</i>	1963	1963	2	1

Family/Species	Year of first record	Year of latest record	Number of Records	No. Hectads
<i>Tomosvaryella kuthyi</i>	1999	1999	2	1
<i>Tomosvaryella littoralis</i>	2008	2008	1	1
<i>Tomosvaryella palliditarsis</i>	1982	1999	2	2
<i>Tomosvaryella sylvatica</i>	1999	2002	9	4
<b>Micropezidae</b>				
<i>Calobata petronella</i>	1901	2012	24	12
<i>Cnodacophora sellata</i>	1957	2008	7	2
<i>Neria cibaria</i>	1918	2004	32	11
<i>Neria commutata</i>	1954	2003	12	5
<i>Neria ephippium</i>	1930	2003	14	5
<i>Micropeza corrigiolata</i>	1936	1999	7	3
<b>Megamerinidae</b>				
<i>Megamerina dolium</i>	2002	2002	1	1
<b>Psilidae</b>				
<i>Loxocera albiseta</i>	1922	2010	24	12
<i>Loxocera aristata</i>	1903	2003	12	7
<i>Loxocera fulviventris</i>	1934	1999	3	2
<i>Loxocera sylvatica</i>	1985	1985	1	1
<i>Chamaepsila atra</i>	1935	1999	8	4
<i>Chamaepsila bicolor</i>	1943	1944	2	1
<i>Chamaepsila buccata</i>	1916	1940	3	2
<i>Chamaepsila nigra</i>	1931	1999	7	5
<i>Chamaepsila nigricornis</i>	1920	2001	17	8
<i>Chamaepsila pallida</i>	1909	1999	12	5
<i>Chamaepsila rosae</i>	1931	2003	21	10
<i>Chamaepsila obscuritarsis</i>	1926	2002	2	2
<i>Chyliza leptogaster</i>	1999	2003	5	3
<i>Psila fimetaria</i>	1900	1987	4	3
<i>Psila merdaria</i>	1932	1963	2	2
<i>Psilosoma lefebvrei</i>	1963	2001	5	2
<b>Conopidae</b>				
<i>Conops flavipes</i>	1900	2011	41	17
<i>Conops strigatus</i>	1995	1995	1	1
<i>Conops vesicularis</i>	1800	2007	6	3
<i>Physocephala nigra</i>	1991	1991	1	1
<i>Myopa buccata</i>	1900	2011	17	8
<i>Myopa testacea</i>	1942	1999	8	4
<i>Thecophora atra</i>	1917	1996	4	2
<i>Thecophora fulvipes</i>	1917	2001	7	4
<i>Sicus ferrugineus</i>	1900	2012	63	17
<b>Lonchaeidae</b>				
<i>Dasiops mucronatus</i>	1999	1999	2	1
<i>Dasiops spatiosus</i>	1982	1982	1	1

Family/Species	Year of first record	Year of latest record	Number of Records	No. Hectads
<i>Lonchaea albitarsis</i>	2002	2002	1	1
<i>Lonchaea chorea</i>	1943	2002	5	4
<i>Lonchaea collini</i>	2005	2005	1	1
<i>Lonchaea contigua</i>	2002	2003	5	3
<i>Lonchaea fraxina</i>	2002	2003	4	2
<i>Lonchaea fugax</i>	1999	2012	5	2
<i>Lonchaea mallochi</i>	2002	2003	2	2
<i>Lonchaea nitens</i>	2002	2002	3	3
<i>Lonchaea palposa</i>	1982	1982	1	1
<i>Lonchaea patens</i>	1999	2003	9	6
<i>Lonchaea peregrina</i>	2012	2012	2	1
<i>Lonchaea sylvatica</i>	1927	2002	3	3
<i>Lonchaea tarsata</i>	1932	1993	2	2
<i>Setisquamalonchaea fumosa</i>	1931	1994	3	3
<b>Pallopteridae</b>				
<i>Palloptera anderssoni</i>	1999	1999	2	1
<i>Palloptera modesta</i>	1978	2003	5	4
<i>Palloptera muliebris</i>	1994	2002	5	3
<i>Palloptera quinquemaculata</i>	1957	2013	20	9
<i>Palloptera saltuum</i>	1903	2013	17	8
<i>Palloptera trimacula</i>	1932	2001	14	8
<i>Palloptera umbellatarum</i>	1902	2001	10	4
<i>Palloptera usta</i>	1982	1982	1	1
<i>Palloptera ustulata</i>	1936	2002	8	6
<b>Piophilidae</b>				
<i>Neottiophilum praeustum</i>	1922	1936	3	2
<i>Allopiophila luteata</i>	1890	2003	4	3
<i>Parapiophila vulgaris</i>	1930	1999	12	3
<i>Stearibia nigriceps</i>	1938	1999	3	2
<b>Ulidiidae</b>				
<i>Ceroxys urticae</i>	1999	1999	2	1
<i>Herina frondescentiae</i>	1920	2013	60	26
<i>Herina germinationis</i>	1999	1999	2	1
<i>Herina longistylata</i>	2012	2012	1	1
<i>Melieria cana</i>	1931	1999	11	7
<i>Melieria omissa</i>	1976	2002	12	6
<i>Otites guttatus</i>	1995	1995	1	1
<i>Seioptera vibrans</i>	1941	2002	7	6
<i>Tetanops myopinus</i>	1999	1999	3	2
<b>Platystomatidae</b>				
<i>Platystoma seminationis</i>	1996	1996	1	1
<i>Rivellia syngenesiae</i>	1902	2013	34	11

Family/Species	Year of first record	Year of latest record	Number of Records	No. Hectads
<b>Tephritidae</b>				
<i>Dithryca guttularis</i>	1995	1995	1	1
<i>Urophora cuspidata</i>	1987	1987	2	2
<i>Urophora jaceana</i>	1923	2012	37	15
<i>Urophora solstitialis</i>	1902	1906	2	1
<i>Urophora stylata</i>	1920	1999	7	4
<i>Noeeta pupillata</i>	1941	1941	1	1
<i>Acinia corniculata</i>	2002	2002	1	1
<i>Campiglossa plantaginis</i>	1981	1999	4	2
<i>Campiglossa solidaginis</i>	1945	1945	1	1
<i>Dioxya bidentis</i>	1993	1993	2	2
<i>Tephritis bardanae</i>	1903	2004	17	8
<i>Tephritis conura</i>	1992	2013	5	3
<i>Tephritis hyoscyami</i>	1922	1922	1	1
<i>Tephritis leontodontis</i>	1928	2004	6	3
<i>Tephritis neesii</i>	1926	2002	9	6
<i>Tephritis ruralis</i>	1917	1999	4	2
<i>Tephritis vespertina</i>	1915	2012	20	7
<i>Chaetostomella cylindrica</i>	1902	2012	33	12
<i>Orellia falcata</i>	1920	1920	2	1
<i>Terellia plagiata</i>	1996	1996	1	1
<i>Terellia ruficauda</i>	1993	1999	5	2
<i>Terellia serratulae</i>	2002	2002	1	1
<i>Xyphosia miliaria</i>	1919	2013	44	20
<i>Rhagoletis alternata</i>	1917	2002	11	3
<i>Acidia cognata</i>	1936	2012	11	7
<i>Anomoia purmunda</i>	1977	1977	1	1
<i>Cryptaciura rotundiventris</i>	1925	2002	2	2
<i>Euleia heraclei</i>	1934	1994	10	3
<i>Philophylla caesio</i>	1999	1999	4	2
<i>Platyparea discoidea</i>	1994	2007	2	2
<i>Trypeta artemisiae</i>	2003	2003	2	1
<i>Trypeta zoe</i>	1988	1988	1	1
<b>Lauxaniidae</b>				
<i>Homoneura thalhammeri</i>	2002	2002	1	1
<i>Aulogastromyia anisodactyla</i>	1982	1992	2	2
<i>Calliopum aeneum</i>	1920	2002	6	4
<i>Calliopum elisae</i>	1987	1999	4	3
<i>Calliopum geniculatum</i>	1999	1999	2	1
<i>Calliopum simillimum</i>	1987	2002	2	2
<i>Cnemacantha muscaria</i>	1999	1999	3	2
<i>Lauxania cylindricornis</i>	1922	1999	4	3
<i>Meiosimyza affinis</i>	1934	1999	9	4

Family/Species	Year of first record	Year of latest record	Number of Records	No. Hectads
<i>Meiosimyza decempunctata</i>	1988	1999	6	4
<i>Meiosimyza decipiens</i>	1987	2002	5	4
<i>Meiosimyza illota</i>	1933	2001	8	5
<i>Meiosimyza platycephala</i>	1931	2008	8	5
<i>Meiosimyza rorida</i>	1932	2008	44	17
<i>Meiosimyza subfasciata</i>	1987	2002	3	3
<i>Minettia longipennis</i>	1932	2002	5	3
<i>Minettia fasciata</i>	1999	1999	2	1
<i>Minettia flaviventris</i>	1985	1985	1	1
<i>Minettia lupulina</i>	1999	1999	3	2
<i>Minettia plumicornis</i>	1980	1999	8	4
<i>Minettia rivosa</i>	1987	2002	6	3
<i>Peplomyza litura</i>	1923	1999	17	4
<i>Poecilolycia vittata</i>	1939	1999	3	2
<i>Pseudolyciella pallidiventris</i>	1931	2002	8	5
<i>Pseudolyciella stylata</i>	1999	1999	2	1
<i>Sapromyza albiceps</i>	1934	2002	5	3
<i>Sapromyza halidayi</i>	1987	2002	4	3
<i>Sapromyza obsoleta</i>	1940	1940	2	1
<i>Sapromyza opaca</i>	1936	2002	3	2
<i>Sapromyza sexpunctata</i>	1982	2008	6	3
<i>Sapromyza zetterstedti</i>	1982	2002	3	3
<i>Sapromyza hyalinata</i>	1999	2002	9	3
<i>Tricholauxania praeusta</i>	1931	2002	26	11
<b>Chamaemyiidae</b>				
<i>Acrometopia wahlbergi</i>	1967	2011	6	1
<i>Chamaemyia aridella</i>	1963	2002	8	4
<i>Chamaemyia flavipalpis</i>	1978	1999	13	2
<i>Chamaemyia geniculata</i>	1932	1938	4	1
<i>Chamaemyia herbarum</i>	1999	1999	12	4
<i>Chamaemyia juncorum</i>	1963	2003	4	2
<i>Chamaemyia polystigma</i>	1932	1999	15	6
<i>Chamaemyia sylvatica</i>	1999	1999	2	1
<b>Coelopidae</b>				
<i>Coelopa frigida</i>	1993	1993	2	1
<b>Dryomyzidae</b>				
<i>Dryomyza decrepita</i>	1935	1935	1	1
<i>Dryomyza flaveola</i>	1933	1999	15	5
<i>Neuroctena anilis</i>	1901	2011	56	16
<b>Heterocheilidae</b>				
<i>Heterocheila buccata</i>	1999	1999	8	2
<b>Phaeomyiidae</b>				
<i>Pelidnoptera fuscipennis</i>	1940	2012	18	9

Family/Species	Year of first record	Year of latest record	Number of Records	No. Hectads
<i>Pelidnoptera nigripennis</i>	1904	1918	3	1
<b>Sciomyzidae</b>				
<i>Colobaea bifasciella</i>	1982	1982	1	1
<i>Colobaea distincta</i>	1982	1982	1	1
<i>Pherbellia albocostata</i>	1901	2002	21	8
<i>Pherbellia annulipes</i>	2012	2012	3	2
<i>Pherbellia brunnipes</i>	1985	1985	1	1
<i>Pherbellia cinerella</i>	1936	2012	43	10
<i>Pherbellia dorsata</i>	2004	2004	1	1
<i>Pherbellia dubia</i>	1921	2002	30	10
<i>Pherbellia pallidiventris</i>	2002	2002	1	1
<i>Pherbellia schoenherri</i>	1992	2012	11	5
<i>Pherbellia scutellaris</i>	1947	1947	1	1
<i>Pherbellia ventralis</i>	1982	2004	14	8
<i>Pteromicra angustipennis</i>	1931	2003	13	8
<i>Pteromicra glabricula</i>	1980	1982	2	1
<i>Pteromicra leucopeza</i>	1982	1982	1	1
<i>Sciomyza simplex</i>	1982	1982	1	1
<i>Tetanura pallidiventris</i>	1934	2002	43	16
<i>Anticheta brevipennis</i>	1993	2003	5	3
<i>Coremacera marginata</i>	1863	1863	1	1
<i>Dictya umbrarum</i>	1963	2013	14	6
<i>Ectinocera borealis</i>	1800	2002	11	2
<i>Elgiva cucularia</i>	1965	2012	25	11
<i>Elgiva sollicita</i>	1995	2010	4	2
<i>Euthycera fumigata</i>	1936	2012	38	12
<i>Hydromya dorsalis</i>	1901	2008	34	19
<i>Ilione albiseta</i>	1911	2012	45	16
<i>Ilione lineata</i>	1991	2012	22	6
<i>Limnia paludicola</i>	1985	2012	25	8
<i>Limnia unguicornis</i>	1935	2012	30	15
<i>Pherbina coryleti</i>	1982	2012	84	21
<i>Psacadina verbekei</i>	1991	1991	1	1
<i>Renocera pallida</i>	1935	2012	38	14
<i>Renocera stroblii</i>	1958	2004	15	9
<i>Sepedon sphegea</i>	2002	2012	4	2
<i>Sepedon spinipes</i>	2012	2012	1	1
<i>Tetanocera arrogans</i>	1987	2004	13	8
<i>Tetanocera elata</i>	1903	2012	25	13
<i>Tetanocera ferruginea</i>	1898	2013	70	23
<i>Tetanocera freyi</i>	1982	1999	7	5
<i>Tetanocera fuscinervis</i>	1941	2013	11	6
<i>Tetanocera hyalipennis</i>	1982	2012	72	20

Family/Species	Year of first record	Year of latest record	Number of Records	No. Hectads
<i>Tetanocera phyllophora</i>	1958	2003	8	5
<i>Tetanocera punctifrons</i>	1987	2004	5	5
<i>Tetanocera robusta</i>	1943	2012	30	12
<i>Tetanocera silvatica</i>	1901	2004	8	5
<i>Trypetoptera punctulata</i>	1904	2008	45	12
<b>Sepsidae</b>				
<i>Nemopoda nitidula</i>	1902	2008	19	13
<i>Nemopoda pectinulata</i>	1982	1984	3	3
<i>Orygma luctuosum</i>	1904	1904	2	1
<i>Saltella sphondylii</i>	1988	2006	7	3
<i>Sepsis cynipsea</i>	1920	2008	42	22
<i>Sepsis duplicata</i>	1967	1984	8	5
<i>Sepsis flavimana</i>	1987	2002	6	4
<i>Sepsis fulgens</i>	1958	2010	30	17
<i>Sepsis neocynipsea</i>	1963	1993	6	3
<i>Sepsis nigripes</i>	1934	1940	4	1
<i>Sepsis orthocnemis</i>	1963	2002	24	11
<i>Sepsis punctum</i>	1909	2012	32	15
<i>Sepsis violacea</i>	1934	2008	25	12
<i>Themira annulipes</i>	1940	1988	2	2
<i>Themira lucida</i>	1939	2009	8	5
<i>Themira minor</i>	1941	2009	12	6
<i>Themira pusilla</i>	1963	2001	6	6
<i>Themira putris</i>	1988	2009	4	3
<i>Themira superba</i>	1982	2009	18	8
<b>Clusiidae</b>				
<i>Clusia flava</i>	1999	2005	16	5
<i>Clusiodes ruficollis</i>	2012	2012	1	1
<i>Clusiodes albimanus</i>	1922	2010	24	10
<i>Clusiodes gentilis</i>	2002	2012	15	7
<i>Clusiodes verticalis</i>	1984	1999	6	4
<i>Paraclusia tigrina</i>	2001	2001	1	1
<b>Odiniidae</b>				
<i>Odinia boletina</i>	2004	2004	1	1
<b>Agromyzidae</b>				
<i>Agromyza alnibetulae</i>	2010	2010	1	1
<i>Agromyza alnivora</i>	2010	2010	1	1
<i>Agromyza idaeiana</i>	2011	2011	1	1
<i>Agromyza nana</i>	2011	2011	1	1
<i>Agromyza nigrescens</i>	1999	1999	2	1
<i>Agromyza nigripes</i>	1999	1999	2	1
<i>Agromyza reptans</i>	1937	1938	3	1
<i>Aulagromyza populicola</i>	2012	2012	1	1

Family/Species	Year of first record	Year of latest record	Number of Records	No. Hectads
<i>Cerodontha denticornis</i>	1999	1999	14	6
<i>Cerodontha fulvipes</i>	1999	1999	2	1
<i>Cerodontha capitata</i>	1999	1999	4	2
<i>Cerodontha muscina</i>	1994	1994	1	1
<i>Cerodontha pygmaea</i>	1999	1999	2	1
<i>Chromatomyia aprilina</i>	2010	2012	8	5
<i>Chromatomyia asteris</i>	2009	2010	2	2
<i>Chromatomyia loniceræ</i>	1991	2013	5	4
<i>Chromatomyia milii</i>	1931	1939	8	3
<i>Chromatomyia primulae</i>	1989	1991	2	1
<i>Chromatomyia scolopendri</i>	2005	2011	4	2
<i>Liriomyza flaveola</i>	1933	1999	13	8
<i>Metopomyza flavonotata</i>	1939	1939	1	1
<i>Napomyza lateralis</i>	1938	1940	4	1
<i>Napomyza scrophulariae</i>	2011	2011	1	1
<i>Phytobia cambii</i>	1999	1999	2	1
<i>Phytoliriomyza melampyga</i>	1980	2009	11	5
<i>Phytomyza agromyzina</i>	2011	2011	1	1
<i>Phytomyza calthophila</i>	2009	2010	3	2
<i>Phytomyza cecidonomia</i>	1999	1999	2	1
<i>Phytomyza flavicornis</i>	1938	1938	1	1
<i>Phytomyza ilicis</i>	1931	2013	31	14
<i>Phytomyza minuscula</i>	2012	2012	1	1
<i>Phytomyza ranunculi</i>	1931	2013	10	4
<i>Phytomyza wahlgreni</i>	1999	1999	2	1
<i>Pseudonapomyza atra</i>	1963	1963	1	1
<b>Opomyzidae</b>				
<i>Geomyza balachowskyi</i>	1940	1992	3	3
<i>Geomyza hackmani</i>	1920	1939	9	5
<i>Geomyza majuscula</i>	1985	1985	1	1
<i>Geomyza tripunctata</i>	1904	2012	44	18
<i>Opomyza florum</i>	2002	2006	2	2
<i>Opomyza germinationis</i>	1921	2013	111	28
<i>Opomyza lineatopunctata</i>	1922	2006	4	4
<i>Opomyza petrei</i>	1987	1993	8	7
<i>Opomyza punctata</i>	1985	1985	1	1
<b>Anthomyzidae</b>				
<i>Anthomyza collini</i>	1999	1999	2	1
<i>Anthomyza gracilis</i>	1987	2002	5	4
<i>Paranthomyza nitida</i>	1999	2002	3	2
<i>Stiphrosoma laetum</i>	1985	1985	1	1
<b>Aulacigastridae</b>				
<i>Aulacigaster leucopeza</i>	2002	2002	3	2

Family/Species	Year of first record	Year of latest record	Number of Records	No. Hectads
<b>Milichiidae</b>				
<i>Phyllomyza securicornis</i>	1999	1999	2	1
<b>Carnidae</b>				
<i>Meoneura vagans</i>	1999	1999	2	1
<i>Pelomyiella cinerella</i>	1999	1999	2	1
<i>Tethina grisea</i>	1999	1999	5	1
<i>Tethina illota</i>	1999	1999	6	2
<i>Xanthocanace ranula</i>	1999	1999	2	1
<b>Chloropidae</b>				
<i>Cetema elongatum</i>	1963	1984	4	3
<i>Cetema myopinum</i>	1931	1939	7	2
<i>Cetema neglectum</i>	1999	1999	4	2
<i>Cetema simile</i>	2002	2002	1	1
<i>Cetema transversum</i>	1963	1963	3	1
<i>Chlorops calceatus</i>	1931	2003	22	6
<i>Chlorops hypostigma</i>	1999	2002	23	6
<i>Chlorops laetus</i>	1958	1958	1	1
<i>Chlorops limbatus</i>	1999	1999	6	3
<i>Chlorops meigenii</i>	1937	1999	3	2
<i>Chlorops planifrons</i>	1929	1929	1	1
<i>Chlorops scalaris</i>	1999	2002	5	3
<i>Chlorops speciosus</i>	1927	1940	7	2
<i>Chlorops strigulus</i>	1999	1999	6	2
<i>Chlorops troglodytes</i>	1937	1937	4	1
<i>Chlorops varsoviensis</i>	1936	1936	1	1
<i>Cryptonevra flavitarsis</i>	1985	1999	5	3
<i>Epichlorops puncticollis</i>	1984	2002	4	3
<i>Eurina lurida</i>	1929	1929	1	1
<i>Eutropha fulvifrons</i>	1999	1999	1	1
<i>Lasiosina intermedia</i>	1999	1999	4	1
<i>Melanum laterale</i>	1999	1999	10	2
<i>Meromyza femorata</i>	1937	1938	3	1
<i>Meromyza nigriventris</i>	1921	1921	1	1
<i>Meromyza pratorum</i>	1931	1999	12	4
<i>Thaumatomyia glabra</i>	1931	2002	7	4
<i>Thaumatomyia hallandica</i>	1999	1999	4	2
<i>Thaumatomyia notata</i>	1928	2002	17	7
<i>Thaumatomyia trifasciata</i>	1999	1999	2	1
<i>Aphanotrigonum trilineatum</i>	1938	1999	3	2
<i>Conioscinella frontella</i>	1937	2002	6	4
<i>Conioscinella gallarum</i>	2002	2002	1	1
<i>Dicraeus styriacus</i>	1999	1999	1	1
<i>Dicraeus vagans</i>	1999	1999	8	3

Family/Species	Year of first record	Year of latest record	Number of Records	No. Hectads
<i>Elachiptera cornuta</i>	1931	1999	20	5
<i>Elachiptera megaspis</i>	1984	1984	1	1
<i>Elachiptera tuberculifera</i>	2002	2002	1	1
<i>Eribolus hungaricus</i>	1999	1999	4	2
<i>Lasiambia palposa</i>	1999	1999	2	1
<i>Microcercis trigonella</i>	1999	1999	4	2
<i>Oscinella frit</i>	1931	2002	14	6
<i>Oscinella vindicata</i>	2002	2002	1	1
<i>Oscinella maura</i>	1937	1999	5	2
<i>Oscinella pusilla</i>	1931	1940	9	2
<i>Oscinimorpha albisetosa</i>	1999	1999	6	2
<i>Oscinimorpha minutissima</i>	1999	1999	2	1
<i>Rhopalopterum atricorne</i>	1999	1999	2	1
<i>Rhopalopterum femorale</i>	1999	1999	2	1
<i>Tricimba cincta</i>	2002	2002	1	1
<b>Heleomyzidae</b>				
<i>Gymnomus caesius</i>	1912	1912	1	1
<i>Heleomyza serrata</i>	1931	1996	17	5
<i>Morpholeria ruficornis</i>	1982	2002	2	2
<i>Neoleria inscripta</i>	1963	1988	3	2
<i>Neoleria ruficauda</i>	1984	1984	1	1
<i>Neoleria ruficeps</i>	1987	1987	1	1
<i>Scoliocentra confusa</i>	1963	2002	7	4
<i>Scoliocentra amplicornis</i>	1963	1963	1	1
<i>Scoliocentra scutellaris</i>	1963	1963	2	1
<i>Scoliocentra villosa</i>	1993	2002	2	2
<i>Eccoptomera microps</i>	1959	1963	2	2
<i>Heteromyza commixta</i>	1963	2002	7	5
<i>Heteromyza oculata</i>	1984	1984	1	1
<i>Heteromyza rotundicornis</i>	1985	2002	3	2
<i>Tephrochlaena halterata</i>	1999	1999	2	1
<i>Tephrochlamys flavipes</i>	1980	2002	5	3
<i>Tephrochlamys rufiventris</i>	1917	2002	17	8
<i>Suillia affinis</i>	1984	2002	5	3
<i>Suillia atricornis</i>	1988	2002	8	5
<i>Suillia bicolor</i>	1935	2002	21	7
<i>Suillia dumicola</i>	1982	2002	6	5
<i>Suillia flava</i>	1932	2001	12	6
<i>Suillia flavifrons</i>	1963	1963	9	1
<i>Suillia fuscicornis</i>	1988	1999	3	2
<i>Suillia humilis</i>	1979	2002	11	7
<i>Suillia imberbis</i>	1988	1988	1	1
<i>Suillia laevifrons</i>	1999	2002	3	2

Family/Species	Year of first record	Year of latest record	Number of Records	No. Hectads
<i>Suillia notata</i>	1958	2001	6	4
<i>Suillia oxyphora</i>	1982	1982	1	1
<i>Suillia pallida</i>	1992	2002	5	4
<i>Suillia parva</i>	1982	1992	3	3
<i>Suillia ustulata</i>	1959	1959	1	1
<i>Suillia variegata</i>	1988	2001	7	6
<b>Trixoscelididae</b>				
<i>Trixoscelis obscurella</i>	1999	1999	4	2
<b>Sphaeroceridae</b>				
<i>Borborillus uncinatus</i>	1931	1931	1	1
<i>Borborillus vitripennis</i>	1979	2002	4	3
<i>Copromyza equina</i>	1963	2002	5	4
<i>Copromyza nigrina</i>	1958	2002	25	7
<i>Copromyza stercoraria</i>	1963	2004	25	7
<i>Crumomyia fimetaria</i>	1988	2001	4	3
<i>Crumomyia nigra</i>	1958	1963	7	2
<i>Crumomyia nitida</i>	1959	2001	18	6
<i>Crumomyia notabilis</i>	1963	1963	1	1
<i>Crumomyia roserii</i>	1967	2006	4	3
<i>Lotophila atra</i>	1963	2004	18	6
<i>Chaetopodella scutellaris</i>	1937	1937	2	1
<i>Coproica acutangula</i>	1963	1963	1	1
<i>Coproica ferruginata</i>	1963	1963	1	1
<i>Coproica pusio</i>	1963	1963	1	1
<i>Gonioneura spinipennis</i>	1963	1963	1	1
<i>Leptocera caenosa</i>	1963	1963	3	1
<i>Leptocera fontinalis</i>	1931	1988	7	3
<i>Limosina silvatica</i>	1932	1979	5	3
<i>Minilimosina fungicola</i>	1963	1963	3	1
<i>Minilimosina v-atrum</i>	1963	1963	2	1
<i>Opacifrons coxata</i>	1988	1988	1	1
<i>Opalimosina denticulata</i>	1963	1963	1	1
<i>Opalimosina mirabilis</i>	1963	1963	1	1
<i>Opalimosina liliputana</i>	1963	1963	1	1
<i>Pseudocollinella humida</i>	1999	1999	4	1
<i>Pseudocollinella septentrionalis</i>	1999	1999	3	1
<i>Pteremis fenestralis</i>	2002	2002	1	1
<i>Pullimosina pullula</i>	1937	1939	2	1
<i>Rachispoda lutosa</i>	1963	1963	1	1
<i>Spelobia clunipes</i>	1963	1988	8	2
<i>Spelobia luteilabris</i>	1963	1963	1	1
<i>Spelobia manicata</i>	1931	1939	5	1
<i>Spelobia nana</i>	1963	1963	3	1

Family/Species	Year of first record	Year of latest record	Number of Records	No. Hectads
<i>Spelobia pseudonivalis</i>	1963	1963	1	1
<i>Spelobia rufilabris</i>	1931	1963	6	2
<i>Terrilimosina schmitzi</i>	1963	1963	1	1
<i>Ischiolepta denticulata</i>	1963	1991	8	2
<i>Ischiolepta pusilla</i>	1931	1999	5	4
<i>Sphaerocera curvipes</i>	1963	1999	9	2
<i>Sphaerocera monilis</i>	1931	2001	2	2
<b>Drosophilidae</b>				
<i>Chymomyza costata</i>	2002	2005	4	2
<i>Chymomyza fuscimana</i>	1999	2002	4	2
<i>Drosophila busckii</i>	1988	1988	1	1
<i>Drosophila funebris</i>	1963	1963	1	1
<i>Drosophila phalerata</i>	1999	2001	3	2
<i>Drosophila confusa</i>	2003	2003	2	2
<i>Drosophila andalusiaca</i>	1988	1988	3	2
<i>Drosophila fenestrarum</i>	1992	1992	1	1
<i>Drosophila obscura</i>	2002	2002	1	1
<i>Drosophila subobscura</i>	1988	2003	7	5
<i>Scaptomyza pallida</i>	1982	2012	10	9
<i>Scaptomyza flava</i>	1988	1992	4	4
<i>Scaptomyza graminum</i>	1963	1999	5	3
<b>Campichoetidae</b>				
<i>Campichoeta obscuripennis</i>	1992	1992	1	1
<b>Diastatidae</b>				
<i>Diastata adusta</i>	1992	1999	5	2
<i>Diastata costata</i>	1963	1963	3	1
<i>Diastata fuscula</i>	1982	2001	23	8
<i>Diastata nebulosa</i>	1963	2002	5	4
<i>Diastata ornata</i>	1992	1992	1	1
<b>Camillidae</b>				
<i>Camilla flavicauda</i>	2002	2002	1	1
<b>Ephydriidae</b>				
<i>Psilopa leucostoma</i>	1999	1999	2	1
<i>Coenia curvicauda</i>	1999	1999	2	1
<i>Ephydra macellaria</i>	1999	1999	2	1
<i>Ephydra riparia</i>	1920	2009	6	4
<i>Parydra pusilla</i>	1999	2008	3	2
<i>Parydra quadripunctata</i>	1999	2008	7	4
<i>Parydra aquila</i>	1999	2009	5	3
<i>Parydra coarctata</i>	1999	2012	25	11
<i>Parydra littoralis</i>	1992	2008	6	4
<i>Parydra nigritarsis</i>	1963	1963	9	1
<i>Lamproscatella sibilans</i>	1963	1999	3	2

Family/Species	Year of first record	Year of latest record	Number of Records	No. Hectads
<i>Limnellia quadrata</i>	1963	2002	11	2
<i>Scatella lutosa</i>	1999	1999	2	1
<i>Scatella paludum</i>	1963	2009	26	9
<i>Scatella stagnalis</i>	1963	2010	17	8
<i>Scatella subguttata</i>	2002	2002	1	1
<i>Scatella tenuicosta</i>	1963	2012	32	8
<i>Discocerina obscurella</i>	2008	2009	2	2
<i>Ditrichophora calceata</i>	1999	2008	5	4
<i>Ditrichophora palliditarsis</i>	2002	2009	15	4
<i>Athyroglossa glabra</i>	2008	2009	8	3
<i>Glenanthe ripicola</i>	1999	1999	2	1
<i>Ochthera mantis</i>	1989	2003	10	6
<i>Hydrellia cochleariae</i>	1999	1999	4	2
<i>Hydrellia fusca</i>	1999	1999	2	1
<i>Hydrellia griseola</i>	1931	2008	9	4
<i>Hydrellia maura</i>	1931	2009	65	21
<i>Hydrellia obscura</i>	2008	2008	2	2
<i>Hydrellia thoracica</i>	1999	1999	2	1
<i>Notiphila (Agrolimna) uliginosa</i>	1963	1999	3	2
<i>Notiphila cinerea</i>	1999	2012	16	8
<i>Notiphila dorsata</i>	2002	2002	1	1
<i>Notiphila riparia</i>	1999	2009	4	3
<i>Axysta cesta</i>	1999	1999	4	2
<i>Hyadina guttata</i>	2008	2008	2	2
<i>Pelina nitens</i>	1999	1999	2	1
<i>Ilythea spilota</i>	1999	2010	5	3
<i>Philygria punctatonervosa</i>	1999	1999	4	2
<b>Hippoboscidae</b>				
<i>Lipoptena cervi</i>	1982	1992	5	4
<i>Melophagus ovinus</i>	1919	1932	2	1
<i>Crataerina pallida</i>	1943	1955	8	3
<i>Ornithomya avicularia</i>	1904	2001	27	8
<i>Ornithomya chloropus</i>	1932	2010	10	6
<i>Ornithomya fringillina</i>	1933	1999	4	3
<i>Stenepteryx hirundinis</i>	1943	1986	2	2
<b>Nycteribiidae</b>				
<i>Nycteribia kolenatii</i>	1993	1995	2	1
<b>Scathophagidae</b>				
<i>Delina nigrita</i>	2002	2002	2	1
<i>Acanthocnema glaucescens</i>	1963	1984	3	2
<i>Ceratinostoma ostiorum</i>	1919	1999	14	6
<i>Chaetosa punctipes</i>	1963	2003	5	3
<i>Cleigastra apicalis</i>	1984	2003	9	4

Family/Species	Year of first record	Year of latest record	Number of Records	No. Hectads
<i>Conisternum decipiens</i>	2001	2012	4	3
<i>Conisternum obscurum</i>	1999	1999	2	1
<i>Cordilura atrata</i>	1963	1963	9	1
<i>Cordilura ciliata</i>	1982	2001	17	6
<i>Cordilura impudica</i>	1999	1999	2	1
<i>Cordilura picipes</i>	1982	1982	1	1
<i>Cordilura pubera</i>	1963	2012	9	5
<i>Cordilura pudica</i>	1988	2003	15	10
<i>Cordilura rufimana</i>	1964	1999	4	2
<i>Cordilura albipes</i>	1931	2010	25	12
<i>Cordilura hyalinipennis</i>	1965	1965	1	1
<i>Gimnomera tarsea</i>	1996	1999	4	2
<i>Gonatherus planiceps</i>	1963	1991	5	2
<i>Nanna armillata</i>	1934	2002	3	2
<i>Nanna fasciata</i>	1934	2008	4	4
<i>Nanna inermis</i>	1963	2002	7	3
<i>Nanna tibiella</i>	1963	2002	3	2
<i>Norellisoma lituratum</i>	1932	1940	4	1
<i>Norellisoma opacum</i>	1997	2004	2	2
<i>Norellisoma spinimanum</i>	1911	2005	29	16
<i>Pogonota barbata</i>	1999	2009	2	2
<i>Scathophaga furcata</i>	1920	2012	76	27
<i>Scathophaga inquinata</i>	1963	2012	26	12
<i>Scathophaga litorea</i>	1976	2000	19	10
<i>Scathophaga lutaria</i>	1901	2002	8	7
<i>Scathophaga scybalaria</i>	1993	1993	1	1
<i>Scathophaga stercoraria</i>	1900	2013	212	38
<i>Scathophaga suilla</i>	1931	2003	40	21
<i>Spaziphora hydromyzina</i>	1963	2005	17	9
<i>Trichopalpus fraternus</i>	1993	1993	1	1
<b>Anthomyiidae</b>				
<i>Anthomyia confusanea</i>	1999	1999	2	1
<i>Anthomyia liturata</i>	1999	2002	3	2
<i>Anthomyia pluvialis</i>	1903	1996	5	4
<i>Botanophila brunneilinea</i>	1999	1999	4	1
<i>Botanophila dissecta</i>	1932	1939	5	1
<i>Botanophila fugax</i>	1963	2002	3	2
<i>Botanophila seneciella</i>	2002	2002	1	1
<i>Botanophila spinosa</i>	1963	1963	2	1
<i>Botanophila striolata</i>	1963	2002	6	2
<i>Fucellia fucorum</i>	1963	1963	1	1
<i>Fucellia maritima</i>	1941	1999	3	2
<i>Fucellia tergina</i>	1958	2012	2	2

Family/Species	Year of first record	Year of latest record	Number of Records	No. Hectads
<i>Hylemya vagans</i>	1901	2013	19	8
<i>Hylemya variata</i>	1931	2011	20	7
<i>Chirosia albitarsis</i>	1994	1994	1	1
<i>Chirosia betuleti</i>	2011	2013	3	2
<i>Chirosia flavipennis</i>	1999	2002	6	3
<i>Chirosia grossicauda</i>	1999	2010	4	3
<i>Chirosia histricina</i>	1999	2011	7	4
<i>Chirosia montana</i>	1963	1963	2	1
<i>Lasiomma picipes</i>	1963	1963	3	1
<i>Lasiomma seminitidum</i>	1963	1963	1	1
<i>Lasiomma strigilatum</i>	1963	2002	2	2
<i>Delia antiqua</i>	1900	1957	3	3
<i>Delia echinata</i>	1963	1963	3	1
<i>Delia florilega</i>	1963	2002	4	2
<i>Delia frontella</i>	1963	1963	3	1
<i>Delia linearis</i>	1992	1992	1	1
<i>Delia nuda</i>	1963	1963	4	1
<i>Delia pallipennis</i>	1999	1999	4	1
<i>Delia penicillaris</i>	1999	1999	4	2
<i>Delia platyura</i>	2002	2002	1	1
<i>Delia radicum</i>	1914	2002	9	4
<i>Delia setigera</i>	1999	1999	4	1
<i>Eustalomyia festiva</i>	1942	2003	7	2
<i>Hydrophoria lancifer</i>	1917	1999	3	2
<i>Hydrophoria ruralis</i>	1999	2002	5	3
<i>Phorbia moliniaris</i>	2002	2002	1	1
<i>Phorbia sepi</i>	1963	1963	7	1
<i>Subhylemyia longula</i>	1999	2002	3	2
<i>Zaphne caudata</i>	1963	1963	1	1
<i>Zaphne divisa</i>	1963	1999	6	3
<i>Pegoplata aestiva</i>	1963	2002	23	7
<i>Pegoplata infirma</i>	1963	2003	19	7
<i>Alliopsis conifrons</i>	1963	1963	4	1
<i>Alliopsis sepiella</i>	1963	1963	2	1
<i>Mycophaga testacea</i>	1999	1999	2	1
<i>Paradelia intersecta</i>	1963	2002	10	3
<i>Pegomya bicolor</i>	1917	2002	9	6
<i>Pegomya cunicularia</i>	1999	1999	2	1
<i>Pegomya haemorrhoum</i>	1963	1963	4	1
<i>Pegomya geniculata</i>	1991	2002	8	4
<i>Pegomya zonata</i>	2002	2002	1	1
<b>Fanniidae</b>				
<i>Fannia armata</i>	1999	2002	5	2

Family/Species	Year of first record	Year of latest record	Number of Records	No. Hectads
<i>Fannia atra</i>	1943	2001	2	2
<i>Fannia canicularis</i>	1901	2009	10	6
<i>Fannia coracina</i>	2002	2002	1	1
<i>Fannia corvina</i>	2002	2002	1	1
<i>Fannia fuscula</i>	1886	2002	5	4
<i>Fannia lepida</i>	1963	1963	3	1
<i>Fannia lustrator</i>	1999	1999	8	3
<i>Fannia manicata</i>	1959	2001	6	4
<i>Fannia mollissima</i>	1963	2001	3	2
<i>Fannia nigra</i>	1999	1999	1	1
<i>Fannia pauli</i>	1999	1999	2	1
<i>Fannia polychaeta</i>	1999	2002	3	2
<i>Fannia postica</i>	1963	2002	8	3
<i>Fannia rondanii</i>	1963	2003	9	4
<i>Fannia serena</i>	1931	2002	20	8
<i>Fannia similis</i>	1999	2002	3	2
<i>Fannia sociella</i>	1999	2002	3	2
<i>Fannia speciosa</i>	1999	1999	1	1
<i>Fannia subpubescens</i>	2001	2001	1	1
<i>Fannia subsimilis</i>	1999	1999	2	1
<i>Piezura pardalina</i>	1886	1886	1	1
<b>Muscidae</b>				
<i>Coenosia agromyzina</i>	1999	1999	4	1
<i>Coenosia albicornis</i>	1963	1999	3	2
<i>Coenosia antennata</i>	1999	1999	4	2
<i>Coenosia bilineella</i>	1939	1939	1	1
<i>Coenosia distinguens</i>			1	1
<i>Coenosia femoralis</i>	1940	2003	6	4
<i>Coenosia lacteipennis</i>	1999	1999	2	1
<i>Coenosia means</i>	1963	2003	7	3
<i>Coenosia minutalis</i>	1999	1999	4	1
<i>Coenosia mollicula</i>	1939	1999	22	5
<i>Coenosia pedella</i>	1934	1999	24	5
<i>Coenosia perpusilla</i>	1963	1963	2	1
<i>Coenosia pumila</i>	1999	1999	2	1
<i>Coenosia pygmaea</i>	1999	1999	1	1
<i>Coenosia ruficornis</i>	1999	1999	4	1
<i>Coenosia rufipalpis</i>	1931	2002	8	4
<i>Coenosia testacea</i>	1999	2002	7	2
<i>Coenosia tigrina</i>	1900	2006	27	10
<i>Coenosia verralli</i>	1999	1999	1	1
<i>Limnospila albifrons</i>	1999	1999	6	3
<i>Lispocephala erythrocer</i>	1958	1999	5	2

Family/Species	Year of first record	Year of latest record	Number of Records	No. Hectads
<i>Lispocephala rubricornis</i>	1999	1999	3	2
<i>Lispocephala verna</i>	2003	2003	2	1
<i>Pseudocoenosia solitaria</i>	1999	2002	5	3
<i>Schoenomyza litorella</i>	1963	2002	8	4
<i>Spanochaeta dorsalis</i>	1999	1999	6	3
<i>Limnophora maculosa</i>	1999	1999	8	3
<i>Limnophora olympiae</i>	2001	2001	1	1
<i>Limnophora riparia</i>	1963	1999	5	3
<i>Limnophora triangula</i>	1988	2002	4	3
<i>Limnophora uniseta</i>	1963	1963	2	1
<i>Lispe litorea</i>	1919	1919	1	1
<i>Lispe loewi</i>	1963	1963	2	1
<i>Lispe pygmaea</i>	1999	1999	4	1
<i>Lispe tentaculata</i>	1963	1963	1	1
<i>Spilogona aerea</i>	1999	1999	10	3
<i>Spilogona contractifrons</i>	1963	1963	3	1
<i>Spilogona denigrata</i>	1963	2003	9	4
<i>Spilogona falleni</i>	1999	1999	6	2
<i>Spilogona litorea</i>	2002	2002	1	1
<i>Spilogona marina</i>	1999	1999	2	1
<i>Spilogona meadei</i>	1963	2003	7	2
<i>Spilogona solitaria</i>	1963	2003	4	2
<i>Spilogona veterrima</i>	1999	2001	3	2
<i>Villeneuveia aestuum</i>	1999	1999	4	2
<i>Azelia cilipes</i>	1931	2002	15	7
<i>Azelia gibbera</i>	1963	1963	3	1
<i>Azelia nebulosa</i>	1901	2002	8	5
<i>Azelia zetterstedtii</i>	1963	1963	2	1
<i>Drymeia brumalis</i>	1963	1963	2	1
<i>Drymeia hamata</i>	1931	2001	13	6
<i>Drymeia vicana</i>	1963	2002	2	2
<i>Hydrotaea albipuncta</i>	1963	1999	5	2
<i>Hydrotaea armipes</i>	1963	1963	2	1
<i>Hydrotaea capensis</i>	1901	1901	1	1
<i>Hydrotaea cyrtoneurina</i>	1999	2002	3	2
<i>Hydrotaea dentipes</i>	1942	2002	10	4
<i>Hydrotaea diabolus</i>	1993	2002	2	2
<i>Hydrotaea ignava</i>	1942	1950	5	1
<i>Hydrotaea irritans</i>	1920	2002	18	9
<i>Hydrotaea similis</i>	1963	2002	2	2
<i>Thricops aculeipes</i>	1963	1963	5	1
<i>Thricops cunctans</i>	1902	1963	4	2
<i>Thricops diaphanus</i>	1915	1915	1	1

Family/Species	Year of first record	Year of latest record	Number of Records	No. Hectads
<i>Thricops hirtulus</i>	1950	1966	2	2
<i>Thricops longipes</i>	1963	1963	6	1
<i>Thricops nigrifrons</i>	1958	1958	1	1
<i>Thricops nigritellus</i>	1963	1963	2	1
<i>Thricops rostratus</i>	1963	1963	3	1
<i>Thricops semicinereus</i>	1958	2002	19	9
<i>Eudasyphora cyanella</i>	1963	2002	15	8
<i>Eudasyphora cyanicolor</i>	2001	2007	9	3
<i>Mesembrina meridiana</i>	1901	2013	144	35
<i>Morellia aenescens</i>	2001	2001	1	1
<i>Morellia hortorum</i>	1901	2001	18	7
<i>Morellia simplex</i>	1963	2002	3	3
<i>Musca autumnalis</i>	2006	2007	3	1
<i>Musca domestica</i>	1800	2012	4	4
<i>Neomyia cornicina</i>	1917	2013	26	8
<i>Neomyia viridescens</i>	1988	2001	7	6
<i>Polietes domitor</i>	1999	2002	5	3
<i>Polietes hirticrus</i>	2001	2001	1	1
<i>Polietes lardarius</i>	1942	2012	25	9
<i>Pyrellia rapax</i>	1901	1901	1	1
<i>Muscina levida</i>	2006	2006	1	1
<i>Muscina prolapsa</i>	1963	1999	4	2
<i>Haematobosca stimulans</i>	1938	2002	6	3
<i>Stomoxys calcitrans</i>	1901	2003	7	5
<i>Brontaea humilis</i>	2002	2002	1	1
<i>Graphomya maculata</i>	1901	2013	25	11
<i>Graphomya minor</i>	2001	2001	3	1
<i>Hebecnema nigra</i>	1999	1999	3	2
<i>Hebecnema umbratica</i>	1931	2002	9	5
<i>Hebecnema vespertina</i>	1938	2002	6	4
<i>Mydaea corni</i>	1904	2001	11	7
<i>Mydaea electa</i>	2001	2001	2	2
<i>Mydaea humeralis</i>	2001	2001	1	1
<i>Mydaea nebulosa</i>	2002	2002	1	1
<i>Mydaea orthonevra</i>	2001	2002	2	2
<i>Mydaea urbana</i>	1999	2001	4	3
<i>Myospila meditabunda</i>	1934	2003	25	7
<i>Helina atricolor</i>	2002	2002	1	1
<i>Helina calceata</i>	1940	1940	1	1
<i>Helina consimilis</i>	1963	1963	2	1
<i>Helina depuncta</i>	1999	2002	11	4
<i>Helina evecta</i>	1943	2002	11	4
<i>Helina fratercula</i>	1963	1963	5	1

Family/Species	Year of first record	Year of latest record	Number of Records	No. Hectads
<i>Helina impuncta</i>	1900	2007	18	7
<i>Helina latitarsis</i>	1963	2003	6	2
<i>Helina maculipennis</i>	1963	1963	5	1
<i>Helina obscurata</i>	1890	2002	6	3
<i>Helina protuberans</i>	1999	1999	8	3
<i>Helina quadrum</i>	2002	2002	1	1
<i>Helina reversio</i>	1963	2002	17	6
<i>Helina setiventris</i>	2002	2002	1	1
<i>Helina subvittata</i>	1963	1963	1	1
<i>Helina trivittata</i>	2002	2002	1	1
<i>Lophosceles mutatus</i>	1963	1963	2	1
<i>Phaonia angelicae</i>	1901	2006	31	12
<i>Phaonia canescens</i>	2011	2013	2	2
<i>Phaonia consobrina</i>	1960	1963	6	2
<i>Phaonia errans</i>	1963	2002	27	5
<i>Phaonia erronea</i>	2002	2002	1	1
<i>Phaonia falleni</i>	1999	1999	1	1
<i>Phaonia incana</i>	1952	2006	16	8
<i>Phaonia pallida</i>	1902	2012	23	9
<i>Phaonia palpata</i>	1999	1999	3	2
<i>Phaonia rufiventris</i>	1904	2002	11	6
<i>Phaonia serva</i>	1931	2002	4	3
<i>Phaonia subfuscinervis</i>	1963	1963	1	1
<i>Phaonia subventa</i>	2002	2013	3	2
<i>Phaonia trimaculata</i>	2001	2001	1	1
<i>Phaonia tuguriorum</i>	1942	2012	18	9
<i>Phaonia valida</i>	2006	2006	1	1
<b>Calliphoridae</b>				
<i>Bellardia pandia</i>	1934	2006	9	4
<i>Bellardia viarum</i>	2001	2002	2	2
<i>Bellardia vulgaris</i>	1963	2002	14	3
<i>Calliphora loewi</i>	2006	2006	1	1
<i>Calliphora stelviana</i>	1963	1963	2	1
<i>Calliphora subalpina</i>	2001	2002	3	3
<i>Calliphora vicina</i>	1912	2009	36	14
<i>Calliphora vomitoria</i>	1902	2012	79	24
<i>Cynomya mortuorum</i>	1947	2002	25	11
<i>Protocalliphora azurea</i>	1942	2002	11	3
<i>Protophormia terraenovae</i>	1963	2014	3	2
<i>Lucilia ampullacea</i>	2001	2007	4	3
<i>Lucilia caesar</i>	1901	2009	55	18
<i>Lucilia illustris</i>	1932	2006	7	5
<i>Lucilia sericata</i>	1914	1978	3	2

Family/Species	Year of first record	Year of latest record	Number of Records	No. Hectads
<i>Lucilia silvarum</i>	2001	2001	2	2
<i>Melanomya nana</i>	1932	2002	20	7
<i>Melinda gentilis</i>	1963	2006	7	4
<i>Pollenia amentaria</i>	1963	2002	8	2
<i>Pollenia angustigena</i>	1999	2006	3	2
<i>Pollenia griseotomentosa</i>	1979	1979	2	1
<i>Pollenia rudis</i>	1901	2007	33	11
<b>Rhinophoridae</b>				
<i>Melanophora roralis</i>	1998	2012	2	2
<i>Paykullia maculata</i>	1988	1989	3	2
<b>Sarcophagidae</b>				
<i>Metopia argyrocephala</i>	1942	2002	4	3
<i>Metopia campestris</i>	1999	2002	3	2
<i>Senotainia conica</i>	1999	1999	8	2
<i>Brachicoma devia</i>	2001	2001	3	1
<i>Sarcophaga pumila</i>	1999	2002	5	3
<i>Sarcophaga haemorrhhoa</i>	2001	2001	1	1
<i>Sarcophaga vagans</i>	2001	2006	4	2
<i>Sarcophaga teretirostris</i>	2001	2001	1	1
<i>Sarcophaga nigriventris</i>	1999	1999	2	1
<i>Sarcophaga aratrix</i>	1988	2006	4	3
<i>Sarcophaga carnaria</i>	1900	2009	55	19
<i>Sarcophaga subvicina</i>	1963	2007	17	6
<i>Sarcophaga variegata</i>	2006	2007	2	1
<i>Sarcophaga sinuata</i>	2001	2001	2	2
<i>Sarcophaga incisilobata</i>	1988	2007	6	4
<b>Tachinidae</b>				
<i>Billaea irrorata</i>	1970	1970	1	1
<i>Dexia vacua</i>	1921	1921	1	1
<i>Trixa conspersa</i>	2001	2001	1	1
<i>Dufouria chalybeata</i>	1999	1999	2	1
<i>Athrycia trepida</i>	1999	1999	2	1
<i>Eriothrix rufomaculata</i>	1917	2012	19	12
<i>Phyllomya volvulus</i>	1901	1931	2	2
<i>Thelaira nigripes</i>	1941	1983	2	2
<i>Voria ruralis</i>	1938	2006	4	4
<i>Admontia grandicornis</i>	2002	2002	1	1
<i>Oswaldia muscaria</i>	2002	2002	1	1
<i>Carcelia lucorum</i>	2002	2006	2	2
<i>Epicampocera succincta</i>	2001	2001	1	1
<i>Lydella stabulans</i>	1931	2002	4	4
<i>Phebellia glauca</i>	2001	2001	1	1
<i>Phryxe heraclei</i>	2001	2002	11	2

Family/Species	Year of first record	Year of latest record	Number of Records	No. Hectads
<i>Phryxe nemea</i>	1934	2002	10	4
<i>Phryxe vulgaris</i>	1981	2001	3	3
<i>Exorista fasciata</i>	1976	2006	4	2
<i>Exorista larvarum</i>	1958	2001	12	4
<i>Exorista grandis</i>	1959	1963	2	2
<i>Cyzenis albicans</i>	1963	2002	3	2
<i>Eumea linearicornis</i>	2001	2001	1	1
<i>Gonia ornata</i>	1952	1953	3	2
<i>Gonia picea</i>	2012	2012	1	1
<i>Ocytata pallipes</i>	1999	2002	3	2
<i>Pales pavidia</i>	1999	2002	5	4
<i>Platymya fimbriata</i>	2007	2007	1	1
<i>Smidtia conspersa</i>	1963	2002	2	2
<i>Phasia hemiptera</i>	1901	2004	19	8
<i>Phasia obesa</i>	1953	1984	3	3
<i>Appendicia truncata</i>	1963	1983	2	2
<i>Panzeria laevigata</i>	1999	1999	2	1
<i>Panzeria rudis</i>	2002	2002	2	2
<i>Eurithia anthophila</i>	1900	2013	11	8
<i>Eurithia intermedia</i>	2001	2001	2	1
<i>Gymnocheta viridis</i>	1901	2002	11	6
<i>Loewia foeda</i>	2002	2002	1	1
<i>Linnaemya vulpina</i>	1900	2001	12	6
<i>Lydina aenea</i>	2002	2002	1	1
<i>Lypha dubia</i>	1923	2002	6	3
<i>Macquartia tenebricosa</i>	1888	1888	1	1
<i>Dexiosoma caninum</i>	1901	2007	9	6
<i>Actia crassicornis</i>	2001	2002	6	1
<i>Actia lamia</i>	1999	2007	4	2
<i>Siphona cristata</i>	1941	2001	6	3
<i>Siphona geniculata</i>	1934	2006	32	9
<i>Siphona maculata</i>	1953	1953	1	1
<i>Siphona setosa</i>	2001	2002	2	1
<i>Tachina fera</i>	1988	2010	4	4
<i>Tachina ursina</i>	1919	2002	8	6
<i>Tachina grossa</i>	1900	2013	57	25
<i>Triarthria setipennis</i>	2002	2002	1	1
<b>Oestridae</b>				
<i>Gasterophilus intestinalis</i>	1906	1906	1	1