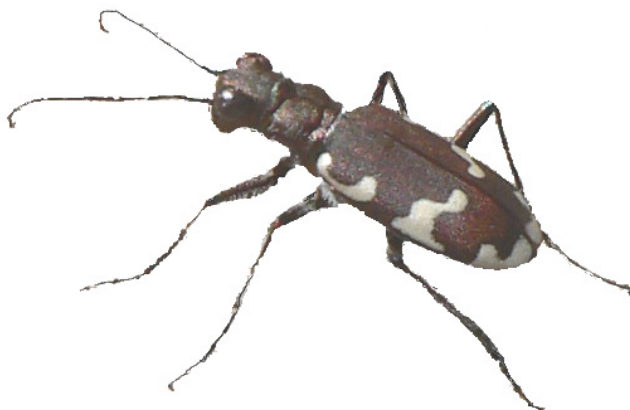


A CHECKLIST OF CUMBRIAN BEETLES



DAVID B. ATTY

2013

A Checklist of Cumbrian Beetles

David B. Atty

2013

Carlisle Natural History Society

c/o Tullie House Museum, Castle Street, Carlisle CA3 8TP

Tel. 01228 618736; Fax. 01228 810249

Email: SteveH@tulliehouse.co.uk

Web: <http://www.carlisenats.org.uk>

<http://www.lakelandwildlife.co.uk>

Sources

1. The earliest beetle records we have, apart from Wordsworth's glow-worms in 1802, date back to T.C.Heysham in the 1830s. But systematic recording, for Cumberland, V.C.70, was initiated by F.H.Day of Carlisle, in five papers published in the *Transactions of Carlisle N.H.S.* in 1909 to 1933. Day's large beetle collection is housed in Tullie House Museum. He added a bare list of Westmorland species, mainly Britten's, in *Naturalist* 1918-1919. The Cumberland total rose from 500 species in 1897 to 1630 in 1908 and 1797 by 1923. Innumerable notes by Day in *E.M.M.*, *Naturalist* and *Ent. Record* increased that to 1855 by 1943. Day's main co-worker, H.Britten of Great Salkeld, contributed many records, of Staphylinidae and Ptiliidae especially, before he left the county in 1912. Apart from a long article in *Ent.Record* 1907 (and *E.M.M.*1909) most of his data have been gathered from specimens in Manchester Museum.
2. R.W.J.Read of Hensingham concentrated on Curculionidae and Chrysomelidae at first, adding numerous species to the county list. (Articles in *BENHS Transactions* 1982, *Coleopterist's Newsletter* 1988 and 1989.) Since then he has worked on most other families with many notes in various entomological journals.
3. D.B.Atty retired from Gloucestershire to Embleton in 1988, and has now recorded 1513 species in Cumbria. Some of the more interesting finds were published in *Ent.Record* 1996, *Coleopterist* 2009 and *Carlisle Naturalist* 2010.
4. Many other coleopterists have contributed records since 1955. They include W.F.Davidson, L.S. Kelly, R.B. Angus, D.Bilton, R.S.Key, L.J.Bauer, K. N.A.Alexander, G.N.Foster, M.Sinclair, J.Thomas and S.M.Hewitt. Some of their records are to be found in the various journals, but most were communicated directly. The total for Cumbria as a whole now stands at 2286 species (about 2182 in V.C. 70 Cumberland and 1606 in V.C. 69 Westmorland and North Lancashire), though 450 of these have not been seen recently – post-1985.
5. My special thanks are due to Stephen Hewitt, Keeper of Natural Sciences at Tullie House: without his enthusiasm and digital expertise there would be no checklist, only *Rudis indigestaque moles*.

Frequency codes

The column headed "Frequency" gives some indication of the commonness or otherwise within Cumbria. It is based on the actual number of records for each species since 1985, in categories numbered as follows:

- 0 Any records were before 1986
- 1 Only one record since 1985
- 2 Very few records since 1985 (2 to 4 or 5)
- 3 Few records (5 to 10)
- 4 10 to 20 records
- 5 20 to 40 records
- 6 40 to 60 records
- 7 More than 60 records.

No allowances have been made for restricted distribution (sea-shore only) or specialised habitat (mammals' nests) or difficult genera, so there is no simple correlation with the loose terminology of "common" or "local" (though category 0 might be labelled "very rare" and 7 "abundant"). However, the categories should, I hope, be broadly comparable within a family or large genus but not between families (e.g. Carabidae v. Cryptophagidae), and for Cumbria only. English Nature's national ratings (local - Notable - Red Data) are not quoted in this checklist. They relate more to distribution over the U.K. and are barely ever relevant to a border county like Cumbria.

Entries in italics are considered dubious Cumbrian species either because they are known imports or introductions or because records are considered to require confirmation

Species	Cumbria latest year	VC 70 Cumberland		VC 69 Westmorland		Frequency
		first year	last year	first year	last year	
CARABIDAE						
Cicindela campestris	2011	1897	20011	1918	2004	4
Cicindela hybrida	2012	1909	2012			3
Cychrus caraboides	2012	1897	2010	1905	2012	4
Carabus arvensis	2010	1835	2010	1899	2005	3
Carabus glabratus	1995	1835	1995	1880	1984	3
Carabus granulatus	2009	1898	2009	1961	2006	3
Carabus nemoralis	2004	1897	2004	1952	2004	3
Carabus nitens	2006	1845	2006	1905	2009	3
Carabus problematicus	2012	1835	2012	1899	2012	7
Carabus violaceus	2012	1897	2011	1905	2012	4
Calosoma inquisitor	2002	1907	1993	1919	2002	2
Leistus ferrugineus	2002	1989	2002	1979?	2002	2
Leistus fulvibarbis	2013	1897	2013	1905	2007	5
Leistus montanus	2008	1841	1990?	1970	2008	2
Leistus rufescens	2007	1897	2007	1958	2007	5
Leistus rufomarginatus	2008	1998	1998	2008	2008	2
Leistus spinibarbis	2012	1915	1975?	1979	20012	2
Nebria brevicollis	2012	1897	2012	1905	2012	7
Nebria gyllenhali	2008	1835	2008	1905	2006	6
Nebria nivalis	1986	1980	1986			1
Nebria salina	2012	1913	2012	1959	2012	5
Notiophilus aesthuans	1990	1980	1990	1976	1986	2
Notiophilus aquaticus	2012	1898	2012	1960	2011	6
Notiophilus biguttatus	2012	1897	2010	1905	2012	5
Notiophilus germinyi	2010	1960	2010	1960	2006	5
Notiophilus palustris	2011	1899	2008	1905	2011	4
Notiophilus quadripunctatus	1991	1835	1991			1
Notiophilus rufipes	1996	1835	1996	1958	1981	1
Notiophilus substriatus	2000	1845	2000	1905	1907	1
Blethisa multipunctata	1994	1835	1994			2
Elaphrus cupreus	2008	1897	2008	1905	2007	5
Elaphrus lapponicus	c.1865	c.1865	c.1865			0
Elaphrus riparius	2005	1898	2005	1905	2004	4
Loricera pilicornis	2013	1901	2013	1905	2011	7
Dyschirius angustatus	2002	1848	2002			2
Dyschirius globosus	2002	1835	2002	1905	1986	3
Dyschirius impunctipennis	1996	1898	1996	1960	1960	2
Dyschirius luedersi	1987	1908	1987			1
Dyschirius nitidus	2006	1899	2006	2003	2006	3
Dyschirius politus	2004	1902	2004	1910	1910	3
Dyschirius salinus	2006	1898	2006	1957	1960	3
Dyschirius thoracicus	2005	1910	2005	1959	1959	1
Clivina collaris	2004	1897	2004	1959	1979	3
Clivina fossor	2008	1835	2008	1905	2007	5
Broscus cephalotes	2012	1897	2005	1956	2012	5
Miscodera arctica	2011	1902	1981	1968	2011	2
Patrobus assimilis	2012	1899	2012	1864	2000	4
Patrobus atrorufus	2012	1898	2012	1905	1998	3
Patrobus septentrionis	1992	1859?	1992	1865?	1967	1
Perileptus areolatus	1908			1908	1908	0
Thalassophilus longicornis	1966	1869	1869	1966	1966	0

Species	Cumbria latest year	VC 70 Cumberland		VC 69 Westmorland		Frequency
		first year	last year	first year	last year	
Trechus fulvus	2012	2012	2012			1
Trechus obtusus	2011	1901	2011	1864	2008	5
Trechus quadristriatus	2007	1897	2007	1905	2004	4
Trechus rubens	2004	1835	2004	1965	1987	2
Trechus secalis	1979	1900	1925	1965	1979	0
Trechus discus	2005	1900	1900	2005	2005	1
Trechus micros	2004	1835	2004	1965	1979	2
Asaphidion curtum	2004	1992	2004			3
Asaphidion flavipes	2004	1993	2004	2003	2003	3
Asaphidion flavipes agg.	1960	1835	1927	1958	1960	0
Asaphidion pallipes	2004	1845	2004			2
Bembidion litorale	2004	1835	2004	1859	2004	3
Bembidion nigricorne	1960	1900	1960			0
Bembidion lampros	2012	1897	2012	1905	2012	5
Bembidion properans	2002	1907	2002			3
Bembidion punctulatum	2007	1835	2007	1987	2004	6
Bembidion bipunctatum	2008	1835	2008	1910	1980	3
Bembidion pallidipenne	2009	1898	2009	1960	1992	2
Bembidion stomoides	2006	1848	2006	1965	1973	2
Bembidion dentellum	2004			2004	2004	1
Bembidion varium	2004	1901	1993	2004	2004	2
Bembidion prasinum	2004	1835	2004	1987	1987	4
Bembidion atrocoeruleum	2011	1835	2007	1905	2011	5
Bembidion geniculatum	2008	1902	2004	2008	2008	2
Bembidion tibiale	2012	1835	2012	1865	2011	7
Bembidion andreae	2004	1845	2004	1999	1999	3
Bembidion bruxellense	2008	1904	2004	1905	2008	3
Bembidion decorum	2007	1835	2007	1905	2004	4
Bembidion femoratum	2004	1835	2004	1960	1960	3
Bembidion fluviatile	1999	1960	1999			1
Bembidion lunatum	1998	1835	1998	1987	1987	3
Bembidion maritimum	1999	1835	1999	1983	1983	1
Bembidion monticola	2008	1898	2004	2004	2008	3
Bembidion nitidulum	2012	1910	2011	1961	2012	4
Bembidion obliquum	2009	2009	2009			1
Bembidion saxatile	2006	1835	2003	2006	2006	2
Bembidion stephensi	2003	1900	2003	1993	1993	2
Bembidion testaceum	2000	1905	2000			1
Bembidion tetracolum	2011	1835	2011	1905	2011	7
Bembidion laterale	2006	1909	2006	2003	2003	3
Bembidion quadrimaculatum	2011	1989	2011	1959	1971	3
Bembidion gilvipes	1928	1928	1928			0
Bembidion schueppeli	2008	1849	2000	1960	2008	2
Bembidion assimile	2005	2005	2005	1993	1993	2
Bembidion clarki	1991	1991	1991			1
Bembidion minimum	2007	1835	2006	1960	2007	3
Bembidion normannum	2011	1901	2011			2
Bembidion genei	2003	1835	2003			2
Bembidion doris	2005	1900	2005	2003	2003	3
Bembidion obtusum	2011	1835	2011	2011	2011	5
Bembidion harpaloides	2008	1835	2012	1904	2012	5
Bembidion quinquestriatum	1999	1901	1999			2
Bembidion aeneum	2011	1835	2011	1968	1984	5
Bembidion biguttatum	2008	1835	2008	1905	1957	3
Bembidion guttula	2012	1835	2012	1905	2008	6
Bembidion iricolor	2006	1976	1989	2006	2006	2

Species	Cumbria latest year	VC 70 Cumberland		VC 69 Westmorland		Frequency
		first year	last year	first year	last year	
Bembidion lunulatum	2005	1908	2005	1960	1992	2
Bembidion mannerheimi	2013	1898	2013	1905	2006	5
Tachys parvulus	2002	2002	2002			2
Pogonus chalceus	2005	1898	2005	1960	1980	3
Stomis pumicatus	1998	1898	1910	1905	1998	1
Pterostichus adstrictus	2010	1898	2006	1899	2010	4
Pterostichus aethiops	2012	1899	2012	1959	2011	4
Pterostichus angustatus	2003	1983	1983	1986	2003	2
Pterostichus anthracinus	1980	1835	1980			0
Pterostichus cristatus	2011	1913	2004	1929	2011	4
Pterostichus cupreus	2007	1835	1999	1905	2007	2
Pterostichus diligens	2013	1898	2013	1905	2011	7
Pterostichus lepidus	1992	1901	1992			1
Pterostichus madidus	2012	1835	2012	1905	2012	7
Pterostichus melanarius	2012	1897	2012	1905	2011	5
Pterostichus minor	2006	1903	2006	1913	2006	3
Pterostichus niger	2011	1897	2011	1905	2011	6
Pterostichus nigrita agg.	2012	1897	2012	1905	2011	7
Pterostichus oblongopunctatus	2010	1959	2010	1957	1984	3
Pterostichus rhaeticus	2012	1927	2012	1980	2011	4
Pterostichus strenuus	2012	1897	2012	1904	2012	7
Pterostichus vernalis	2012	1898	2012	1905	2007	5
Pterostichus versicolor	2012	1897	2011	1905	2012	4
Abax parallelepipedus	2012	1897	2012	1905	2012	6
Calathus ambiguus	1972	1835	1901	1972	1972	0
Calathus erratus	2007	1835	2007	1958	1980	3
Calathus cinctus	2000	1989	2000	1983	1983	3
Calathus fuscipes	2005	1897	2005	1905	1986	3
Calathus melanocephalus s.s.	2011	1897	2011	1901	2011	6
Calathus micropterus	2010	1899	2010	1913	1986	3
Calathus mollis	2010	1897	2007	1958	2010	4
Calathus piceus	2004	1897	2004	1905	1980	3
Laemostenus complanatus	1960	1943	1960	1960	1960	0
Laemostenus terricola	1925	1901	1925			0
Platyderus ruficollis	2007			1981	2007	1
Synuchus nivalis	2010	1845	2010	1957	1998	3
Olisthopus rotundatus	2005	1835	2005	1905	2002	5
Agonum albipes	2012	1835	2012	1905	2012	7
Agonum assimile	2012	1835	2012	1901	2012	7
Agonum dorsale	2008	1897	2008	1953	1991	3
Agonum ericeti	2007	1980	2002	1965	2007	2
Agonum fuliginosum	2013	1897	2013	1905	2011	6
Agonum gracile	2008	1897	2008	1905	2003	4
Agonum marginatum	2005	1897	2005	1960	2003	5
Agonum micans	2009	1903	2011	1864	1960	4
Agonum moestum	2005	1900	2005			3
Agonum muelleri	2012	1897	2012	1905	2012	7
Agonum nigrum	2004	1913	2004	1980	1980	2
<i>Agonum obscurum</i>	1988	1988	1988	1943	1943	1?
Agonum piceum	2005	1898	2005			3
Agonum quadripunctatum	1957	1835	1835	1957	1957	0
Agonum sexpunctatum	1918	1915	1918			0
Agonum thoreyi	2011	1980	2011	1971	2008	3
Agonum viduum	2005	1907	2005	1967	1971	2
Amara aenea	2011	1898	2011	1905	2007	5
Amara anthobia	2008			1905?	2008	1

Species	Cumbria latest year	VC 70 Cumberland		VC 69 Westmorland		Frequency
		first year	last year	first year	last year	
Amara apricaria	2007	1897	1995	1905	2007	2
Amara aulica	2012	1897	2012	1905	2007	5
Amara bifrons	1996	1898	1996			1
Amara communis	2005	1897	2005	1905	2002	3
Amara consularis	1993	1899	1993			1
Amara convexior	2007	1982	2007	1987	1993	4
Amara equestris	2005	1901	2005			1
Amara eurynota	2004	1899	2004	1958	1958	2
Amara familiaris	2007	1898	2004	1971	2007	4
Amara fulva	2010	1898	2010	1986	2000	3
Amara lucida	2002	1905	2002	1960	1986	2
Amara lunicollis	2010	1898	2010	1905	2006	4
Amara nitida	1998	1959	1998			1
Amara ovata	2008	1897	2008	1905	1995	5
Amara plebeja	2011	1897	2011	1956	2002	4
Amara praetermissa	1996	1985	1996			2
Amara similata	2008	1899	2008			3
Amara spreta	1960			1960	1960	0
Amara tibialis	2003	1901	2003	1959	1993	4
Harpalus rufipes	2005	1897	1999	1913	2005	3
Harpalus rufibarbis	1995	1897	1995			1
Harpalus affinis	2008	1897	2008	1952	1986	3
Harpalus anxius	1909	1909	1909			0
Harpalus honestus	1998	1994	1998			2
Harpalus latus	2012	1897	2012	1905	2007	3
Harpalus neglectus	2004	1909	2004	1958	1958	3
<i>Harpalus punctipes</i>	1965			1965	1965	0
Harpalus rubripes	2007	1903	2006	2007	2007	2
Harpalus tardus	2010	1898	2010	1982	1982	2
Anisodactylus binotatus	2007	1897	2002	1971	2007	2
Dicheirotichus gustavi	2011	1899	2009	1960	2011	4
Trichocellus cognatus	2011	1897	2011	1959	2001	4
Trichocellus placidus	2008	1899	2008	1960	2004	5
Bradycellus collaris	2010	1900	2010	1885	1960	2
Bradycellus harpalinus	2007	1897	2007	1958	2002	5
Bradycellus ruficollis	2012	1898	2012	1905	2007	5
Bradycellus sharpi	2004	2004	2004	1971	2002	2
Bradycellus verbasci	2001	1897	1990	1958	2001	2
Stenolophus mixtus	2006	2006	2006	1993	1993	2
Acupalpus dubius	2005	1989	2005			3
Acupalpus exiguus	1920	1920	1920			0
Acupalpus meridianus	1956			1956	1956	0
Badister bipustulatus	2006	1828	2006	1905	2007	3
Badister sodalis	1971	1828	1828	1971	1971	0
Chlaenius nigricornis	2009	1848	2009			2
Oodes helopioides	1835	1835	1835			0
Lebia chlorocephala	1993	1897	1993			1
Lebia cruxminor	1930	1899	1930			0
Demetrias atricapillus	2011	1907	2011			3
Dromius agilis	1993	1901	1993			1
Dromius linearis	2010	1897	2010	1905	2010	5
Dromius melanocephalus	2005	1897	2005	1905	1971	3
Dromius meridionalis	2008	1901	2008	1905	2001	3
Dromius notatus	2005	1899	2005	1967	1967	3
Dromius quadrimaculatus	2011	1897	2011	1905	1971	3
Dromius quadrinotatus	2005	1901	2005	1905	2001	3

Species	Cumbria latest year	VC 70 Cumberland		VC 69 Westmorland		Frequency
		first year	last year	first year	last year	
Metabletus foveatus	2013	1898	2012	1958	2013	4
Cymindis vaporariorum	1988	1899	1988	1982	1982	2
HALIPLIDAE						
Brychius elevatus	2005	1898	2005	1905	1940	2
Halipus apicalis	2010	1924	1983	2010	2010	1
Halipus confinis	2007	1907	2005	1937	2007	2
Halipus flavicollis	2007	1907	2007	1929	1940	3
Halipus fluvialis	2004	1906	1944	1940	2004	1
Halipus fulvus	2003	1835	2003	1905	1975	2
Halipus heydeni	2003	1937	2003	1935	2001	2
Halipus immaculatus	2004	1903	2004	1939	1939	1
Halipus lineatocollis	2009	1835	2009	1905	2001	4
Halipus lineolatus	2010	1908	2010	1932	2007	2
Halipus obliquus	2003	1845	2003	1905	1905	1
Halipus ruficollis	2008	1898	2008	1905	2007	4
Halipus wehnckeii	2005	1901	2005	1929	1940	2
HYGROBIIDAE						
Hygrobia hermanni	2012	?1990	2012	1999	2006	2
NOTERIDAE						
Noterus clavicornis (=major)	2010	1960	2007	1962	2010	3
DYTISCIDAE						
<i>Laccophilus hyalinus</i>	1985	1835	1985			0
Laccophilus minutus	2007	1898	2007	1940	1955	4
Hyphidrus ovatus	2012	1907	2012	1940	2007	3
Hydroglyphus geminus	2008			2007	2008	2
Hygrotus inaequalis	2012	1835	2012	1940	2007	4
Hygrotus quinquelineatus	1992	1907	1992	1989	1989	3
Hygrotus versicolor	1985			1937	1985	1
Coelambus confluens	2006	1905	2006	1960	2002	2
Coelambus impressopunctatus	2012	1898	2012	1835	1986	3
Coelambus novemlineatus	1994	1907	1994			2
Hydroporus angustatus	2007	1906	2007	1963	2003	2
Hydroporus discretus	2005	1898	2005	1905	2001	2
Hydroporus erythrocephalus	2012	1899	2012	1905	2007	4
Hydroporus ferrugineus	1991	1900	1991	1937	1964	1
Hydroporus gyllenhali	2012	1898	2012	1904	2007	4
Hydroporus incognitus	2007	1902	2007	1937	2004	3
Hydroporus longicornis	2007	1981	2007	1974	1981	2
Hydroporus longulus	2011	1912	2011	1963	1981	3
Hydroporus melanarius	2006	1845	2006	1864	2006	4
Hydroporus memnonius	2012	1898	2012	1835	2008	4
Hydroporus morio	2012	1894	2011	1904	2012	4
Hydroporus nigrita	2009	1845	2009	1905	2007	5
Hydroporus obscurus	2007	1900	2007	1864	2001	4
Hydroporus obsoletus	1995	1902	1992	1963	1995	2
Hydroporus palustris	2012	1898	2012	1900	2003	5
Hydroporus planus	2012	1899	2012	1905	2012	4
Hydroporus pubescens	2011	1899	2011	1904	2001	5
Hydroporus rufifrons	2007	1898	1966	1937	2007	4
Hydroporus scalesianus	2000	1983	2000			1
Hydroporus striola	2012	1900	2012	1937	2005	4
Hydroporus tessellatus	2012	1901	2006	1956	2012	3
Hydroporus tristis	2012	1899	2012	1864	2001	4
Hydroporus umbrosus	2005	1899	2005	1937	2004	3
Suphrodytes dorsalis	2007	1983	1983	2007	2007	1
Stictonectes lepidus	2004	1835	2012	1960	1985	3

Species	Cumbria latest year	VC 70 Cumberland		VC 69 Westmorland		Frequency
		first year	last year	first year	last year	
Graptodytes granularis	2003	1835	2003	1937	1987	2
Graptodytes pictus	2009	1903	2009	1937	2007	2
Porhydrus lineatus	1960	1900	1943	1960	1960	0
Deronectes latus	2005	1855	2005			2
Potamonectes assimilis	2002	1835	2002	1932	1980	2
Nebrioporus elegans depressus	2008	1854	2004	1864	2008	4
Stictotarsus duodecimpustulatus	2003	1835	2003	1864	1981	3
Oreodytes davisi	1997	1900	1997	1865	1939	2
Oreodytes sanmarki	2008	1835	2006	1905	2008	3
Oreodytes septentrionalis	2004	1900	2004	1921	2000	4
Laccornis oblongus	1983			1977	1983	0
Copelatus haemorrhoidalis	2012	1982	2012	1960	1995	2
Platambus maculatus	2008	1898	2007	1905	2008	5
Agabus affinis	2012	1906	2012	1937	2005	3
Agabus arcticus	2012	1894	2012	1931	2003	4
Agabus biguttatus	2003	1961	2003	1980	2002	2
Agabus bipustulatus	2012	1898	2012	1904	2012	7
Agabus chalconatus	2004	1980	2004			2
Agabus congener	2009	1865	2009	1902	1996	4
Agabus conspersus	2000	1901	2000			2
Agabus didymus	1988	1988	1988	1988	1988	2
Agabus guttatus	2012	1835	2012	1865	2007	5
Agabus labiatus	2004	1898	1960	1937	2004	1
Agabus melanarius	2008	1909	2008			1
Agabus melanocornis	2012	1835	2012	1905	1988	4
Agabus nebulosus	2012	1898	2012	1905	1953	2
Agabus paludosus	2005	1901	2005	1905	2002	3
Agabus sturmii	2012	1901	2012	1905	2001	4
Agabus unguicularis	2012	1894	2012	1977	1979	2
Ilybius aenescens	2009	1872	2009	1937	2007	4
Ilybius ater	2012	1898	2012	1937	2007	4
Ilybius fuliginosus	2012	1898	2012	1905	2007	5
Ilybius guttiger	1999	1899	1999	1864	1986	2
Ilybius quadriguttatus	2009	2009	2009	1960	2001	2
Ilybius subaeneus	1964	1964	1964	1960	1963	0
Rhantus suturellus	2012	1900	2012	1937	2012	4
Rhantus exsoletus	2012	1835	2012	1905	2004	2
Rhantus suturalis	1960	1898	2012?			1
Colymbetes fuscus	2012	1835	2012	1905	1987	3
Acilius canaliculatus	2012	1981	2012	1960	1960	2
Acilius sulcatus	2012	1899	2012	1905	2007	3
Dytiscus circumflexus	2004	1984	2004			2
Dytiscus marginalis	2012	1898	2012	1905	1989	4
Dytiscus semisulcatus	2012	1835	2012	1905	1950	2
GYRINIDAE						
Gyrinus aeratus	1963			1963	1963	0
Gyrinus paykulli	1987	1987	1987			1
Gyrinus caspius	2005	1901	2005	1956	1985	2
Gyrinus distinctus	1966	1932	1932	1966	1966	0
Gyrinus marinus	1997	1829	1997	1960	1963	2
Gyrinus minutus	2000	1865	2000	1937?	1964	2
Gyrinus natator	1921	1901	1921	1902	1902	0
Gyrinus substriatus	2012	1899	2012	1905	2004	5
Gyrinus urinator	1960	1947	1947	1944	1960	0
Orectochilus villosus	2009	1835	2009	1960	2008	4
SPHAERIIDAE						

Species	Cumbria latest year	VC 70 Cumberland		VC 69 Westmorland		Frequency
		first year	last year	first year	last year	
Sphaerius acaroides	1938			1938	1938	0
HYDROPHILIDAE						
Georissus crenulatus	2004	1856	2004	2004	2004	3
Hydrochus angustatus	2009	1909	2009			2
Hydrochus brevis	1985	1908	1985			0
Helophorus aequalis	2012	1900	2012	1905	2012	5
Helophorus arvernensis	2009	1898	2004	2004	2009	3
Helophorus brevipalpis	2012	1898	2012	1905	2011	5
Helophorus dorsalis	1964	1914	1915	1964	1964	0
Helophorus flavipes	2012	1898	2012	1905	1996	5
Helophorus fulgidicollis	2007	1902	1993	1954	2007	2
Helophorus grandis	2012	1898	2012	1905	2012	6
Helophorus granularis	1988	1916	1988	1913	1988	2
Helophorus griseus	1985			1964	1985	1
Helophorus minutus	2012	1901	2012	1960	2012	4
Helophorus nubilus	1960	1835	1940	1960	1960	0
Helophorus obscurus	2007	1980	2007	1978	2001	4
Helophorus porculus	1961	1835	1835	1961	1961	0
Helophorus strigifrons	2002	2002	2002	1964	1964	1
Helophorus tuberculatus	c.100	c.100	c.100			0
Coelostoma orbiculare	2012	1901	2012	1905	2012	3
Sphaeridium bipustulatum	1992	1835	1992	1905	1987	2
Sphaeridium lunatum	2012	1835	2012	1905	2012	4
Sphaeridium marginatum	2012	2012	2012	2012	2012	2
Sphaeridium scarabaeoides	2012	1901	2011	1905	2012	4
Cercyon analis	2012	1897	2012	1905	2002	6
Cercyon atricapillus	2008	1901	2008			2
Cercyon convexiusculus	1982	1982	1982			0
Cercyon depressus	1936	1936	1936			0
Cercyon haemorrhoidalis	2012	1897	2012	1905	2011	4
Cercyon impressus	2012	1901	2012	1905	2008	4
Cercyon lateralis	2009	1899	2008	1905	2009	4
Cercyon littoralis	2010	1898	2010	1960	1992	3
Cercyon marinus	1993	1993	1993			1
Cercyon melanocephalus	2012	1897	2012	1905	2010	6
Cercyon obsoletus	2011	1899	2010	2011	2011	2
Cercyon pygmaeus	2012	1899	2012	1905	1987	3
Cercyon quisquilius	1971	1898	1917	1905	1971	0
Cercyon terminatus	2011	1901	2011			2
Cercyon tristis	2005	1901	2005	2004	2004	2
Cercyon unipunctatus	1991	1897	1991	1905	1908	1
Cercyon ustulatus	2009	1902	2005	1905	2009	2
Megasternum obscurum	2012	1897	2012	1905	2006	6
Cryptopleurum minutum	2012	1898	2012	1905	1960	3
Paracymus scutellaris	1999	1999	1999			1
Hydrobius fuscipes	2012	1898	2012	1905	2006	4
Anacaena globulus	2012	1898	2012	1905	2010	7
Anacaena limbata agg.	2001	1901	1977	1905	2001	1?
Anacaena lutescens	2012	2006	2012	2001	2010	3
Berosus luridus	2012	2012	2012			1
Laccobius atratus	2012	1960	2012	2001	2001	2
Laccobius atrocephalus	2000	1964	2000	1963	1963	2
Laccobius biguttatus	2005	1901	2005	1963	1963	2
Laccobius bipunctatus	2007	1898	2007	1905	2001	3
Laccobius minutus	2005	1898	2005	1905	1987	3
Laccobius striatulus	2004	1899	2004	1910	2000	3

Species	Cumbria latest year	VC 70 Cumberland		VC 69 Westmorland		Frequency
		first year	last year	first year	last year	
<i>Helochares punctatus</i>	2007	1899	2007	1961	2006	3
<i>Enochrus affinis</i> sens. str.	2012	1899	2012	2000	2001	3
<i>Enochrus bicolor</i>	1986			1986	1986	1
<i>Enochrus coarctatus</i>	2009	1904	2009	1960	1986	3
<i>Enochrus ochropterus</i>	2002	1898	2002	2000	2000	2
<i>Enochrus fuscipennis</i>	2007	1901	2007	1910	2007	3
<i>Enochrus testaceus</i>	1993			1960	1993	1
<i>Cymbiodyta marginella</i>	2007	1918	1918	1960	2007	2
<i>Chaetarthria seminulum</i>	2005	1901	2005	1960	2001	2
<i>Chaetarthria simillima</i>	2007	2007	2007			1
SPHAERITIDAE						
<i>Sphaerites glabratus</i>	1901	1901	1901			0
HISTERIDAE						
<i>Acritus nigricornis</i>	1907	1905	1907			0
<i>Gnathoncus nannetensis</i>	1910	1899	1910			0
<i>Gnathoncus nanus</i>	1972	1972	1972	1905	1905	0
<i>Saprinus aeneus</i>	2003	1899	2003	1905	1905	2
<i>Saprinus cuspidatus</i>	1995	1935	1935	1983	1995	2
<i>Saprinus semistriatus</i>	2006	1897	2003	1905	2006	2
<i>Hypocaccus rugiceps</i>	2000	1909	2000	1964	1995	3
<i>Baeckmanniolus dimidiatus</i>	2006	1899	2006	1960	1992	3
<i>Carcinops pumilio</i>	2009	1909	2005	2009	2009	2
<i>Onthophilus striatus</i>	1987	1899	1944	1905	1987	1
<i>Hister bisexstriatus</i>	1907	1907	1907			0
<i>Hister impressus</i>	1990	1897	1990	1905	1905	1
<i>Hister striola</i>	1992	1897	1992	1905	1971	2
<i>Hister unicolor</i>	2012	1899	2004	1960	2012	2
<i>Paralister carbonarius</i>	2010	1899	2010	1905	2006	3
<i>Paralister neglectus</i>	2000	1899	2000	1905	1907	2
<i>Paralister purpurascens</i>	1963	1835	1835	1963	1963	0
<i>Atholus duodecimstriatus</i>	1960	1907	1960			0
<i>Grammostethus marginatus</i>	1954	1913	1954			0
<i>Peranus bimaculatus</i>	1920	1901	1920	1905	1905	0
HYDRAENIDAE						
<i>Ochthebius auriculatus</i>	1999	1902	1999	1956	1963	2
<i>Ochthebius bicolor</i>	2005	1898	2005			2
<i>Ochthebius dilatatus</i>	1987	1898	1987	1960	1985	2
<i>Ochthebius exsculptus</i>	1995	1900	1980	1905	1995	1
<i>Ochthebius marinus</i>	2003	1900	2003	1960	1985	2
<i>Ochthebius minimus</i>	2009	1908	2009	2007	2007	2
<i>Ochthebius punctatus</i>	1964	1964	1964			0
<i>Ochthebius lejolisii</i>	2012	1987	2012			2
<i>Ochthebius viridis</i>	1944	1910	1944			0
<i>Hydraena britteni</i>	2005	1904	2005	1960	1978	2
<i>Hydraena gracilis</i>	2008	1900	2005	1865	2008	2
<i>Hydraena minutissima</i>	1986	1905	1986			1
<i>Hydraena nigrita</i>	2000	1835	2000	1960	1960	1
<i>Hydraena pulchella</i>	1995	1983	1995			1
<i>Hydraena pygmaea</i>	1982	1982	1982			0
<i>Hydraena riparia</i>	2007	1899	2007	1905	2004	3
<i>Hydraena rufipes</i>	1999	1905	1999	1996	1996	2
<i>Hydraena testacea</i>	1964	1910	1910	1964	1964	0
<i>Limnebius nitidus</i>	2005	1903	2005			2
<i>Limnebius truncatellus</i>	2009	1898	2009	1905	2007	5
PTILIIDAE						
<i>Ptenidium formicetorum</i>	2001	2001	2001			1

Species	Cumbria latest year	VC 70 Cumberland		VC 69 Westmorland		Frequency
		first year	last year	first year	last year	
Ptenidium fuscicorne	2006	1905	2006			1
Ptenidium intermedium	2000	2000	2000			1
Ptenidium laevigatum	2007	1905	2007			2
Ptenidium longicorne	1909	1903	1909			0
Ptenidium nitidum	2012	1901	2012	1905	1967	3
Ptenidium punctatum	1987	1905	1987			1
Ptenidium pusillum	2012	1901	2012	1905	2004	5
Oligella foveolata	1913	1913	1913			0
Ptilium horioni	1913	1913	1913			0
Ptiliola kunzei	2008	1901	2008	1905	1907	1
Ptiliolum fuscum	2010	1913	2010			1
Ptiliolum schwarzi	1913	1913	1913			0
Ptinella aptera	1907	1904	1907			0
Ptinella cavelli	2012	2008	2008	1989	2012	3
Ptinella errabunda	2008	2008	2008	2008	2008	2
Pteryx suturalis	1912	1905	1912			0
Nephanes titan	1905	1905	1905			0
Acrotrichis arnoldi	c.1966	c.1966	c.1966			0
Acrotrichis atomaria	2012	1905	2012	1905	1967	2
Acrotrichis brevipennis	1907	1906	1907			0
Acrotrichis cognata	1997	1997	1997			1
Acrotrichis danica	2012	1901	2012	1905	1913	2
Acrotrichis dispar	1907	1905	1907	1905	1905	0
Acrotrichis fascicularis	2010	1901	2010	1905	1971	3
Acrotrichis grandicollis	2011	1901	2011	1905	1907	2
Acrotrichis henrici	1987	1987	1987			1
Acrotrichis lucidula	1967			1967	1967	0
Acrotrichis intermedia	2012	1901	2012	1905	1971	2
Acrotrichis montandoni	2011	1905	2011	1966	1966	1
Acrotrichis sericans	1907	1905	1907	1905	1905	0
Acrotrichis sitkaensis	2008	1913	2008			1
Acrotrichis thoracica	1966			1966	1966	0
LEPTINIDAE						
Leptinus testaceus	2006	2004	2006	1866	2002	2
LEIODIDAE						
Triarthron maerkeli	1911	1880	1911			0
Hydnobius punctatus	2008	1903	2008			1
Hydnobius spinipes	1991	1991	1991	1991	1991	2
Leiodes badia	1971			1971	1971	0
Leiodes calcarata	2008	1903	2008	1905	2007	3
Leiodes cinnamomea	1922	1922	1922			0
Leiodes furva	1998	1998	1998			1
Leiodes litura	1998	1905	1905	1913	1998	1
Leiodes longipes	1960	1905	1960			0
Leiodes lunicollis	1995?	1995?	1995?			1
Leiodes obesa	1999	1910	1999			1
Leiodes ferruginea	1992	1901	1992	1971	1971	1
Leiodes rufipennis	1994	1901	1994	1910	1960	2
Leiodes rugosa	1845	1835	1845			0
Leiodes strigipenne	1913			1913	1913	0
Leiodes triepkii	1908	1907	1908			0
Liocytusa minuta	2008	2008	2008			1
Colenis immunda	1971	1903	1971	1905	1905	0
Anisotoma glabra	1996	1829?	1996			1
Anisotoma humeralis	2011	1899	2011	1918	2006	3
Anisotoma orbicularis	2008	1916	1942	2008	2008	1

Species	Cumbria latest year	VC 70 Cumberland		VC 69 Westmorland		Frequency
		first year	last year	first year	last year	
Agathidium atrum	1845	1845	1845			0
Agathidium convexum	1906	1906	1906			0
Agathidium laevigatum	2004	1907	2004	1905	1905	1
Agathidium marginatum	2004	1905	2004			2
Agathidium nigrinum	1988	1845	1903	1904	1988	1
Agathidium nigripenne	2012	1901	2010	2010	2012	3
Agathidium pisanum	1991			1903	1991	2
Agathidium rotundatum	1994	1901	1994	1971	1971	2
Agathidium seminulum	2002	1899	1907	1904	2002	2
Agathidium varians	2007	1898	2007	1905	1905	1
Ptomaphagus medius	1941	1899	1941			0
Ptomaphagus subvillosus	2000	1897	2000	1905	1960	2
Nargus anisotomoides	2006	1903	2006	1913	1998	2
Nargus velox	2007	1898	2001	1905	2007	2
Nargus wilkini	1991	1899	1991			2
Choleva agilis	1960	1898	1910	1905	1960	0
Choleva angustata	1907	1901	1907			0
Chovela fagniezi	1960	1897	1960			0
Choleva jeanneli	2005	1901	2005	1972	1972	1
Choleva oblonga	2009	1901	2009			2
Choleva spadicea	1905	1897	1905			0
Sciodrepoides fumatus	2011	1899	2011	1905	1971	2
Sciodrepoides watsoni	2008	1901	2008	1905	2007	3
Catops chrysomeloides	2008	1899	2008	1905	2007	3
Catops coracinus	2007	1901	1998	1905	2007	2
Catops fuliginosus	2011	1901	2011	1905	2002	3
Catops fuscus	1995	1901	1995	1905	1907	2
Catops grandicollis	2009	1899	2009	1960	2007	2
Catops kirbyi	1995	1901	1995	1905	1905	2
Catops longula	1910	1899	1910			0
Catops morio	2012	1899	2012	1971	1987	2
Catops nigricans	2009	1897	2009	1864	1971	3
Catops nigrita	2001	1899	1960	2000	2001	2
Catops tristis	2011	1897	2011	1905	2007	4
Colon angulare	1905	1905	1905			0
Colon appendiculatum	1900	1900	1900			0
Colon brunneum	1972	1901	1960	1913	1913	0
Colon dentipes	1907	1907	1907			0
Colon latum	1924	1924	1924			0
Colon serripes	1908	1908	1908			0
Colon viennense	1908	1901	1908			0
SILPHIDAE						
Necrophorus humator	2011	1897	2011	1905	2006	4
Necrophorus interruptus	1961	1961	1961	1960	1960	0
Necrophorus investigator	2006	1897	2001	1905	2006	3
Necrophorus vespillo	2007	1897	2007	1971	1971	2
Necrophorus vespilloides	2011	1897	2011	1913	2006	4
Necrophorus vestigator	1915	1915	1915			0
Necrodes littoralis	2008	1901	2008	1905	1972	2
Thanatophilus rugosus	2011	1897	2011	1905	2007	3
Thanatophilus sinuatus	1993	1911	1993			1
Oiceoptoma thoracicum	2011	1897	2011	1904	2006	3
Aclypea opaca	2003	1899	2003	1971	1971	2
Dendroxena quadrimaculata	2003	1897	2003	1953	1980	2
Silpha atrata	2012	1897	2011	1905	2012	6
Silpha obscura	1988	1841	1988	1960	1960	1

Species	Cumbria latest year	VC 70 Cumberland		VC 69 Westmorland		Frequency
		first year	last year	first year	last year	
<i>Silpha tristis</i>	2000	1899	2000	1918	1992	2
<i>Silpha tyrolensis</i>	1963	1897	1926	1905	1963	0
SCYDMAENIDAE						
<i>Cephennium gallicum</i>	2008	2008	2008			1
<i>Microscydmus nanus</i>	2012	2008	2012			2
<i>Neuraphes angulatus</i>	2012	1906	2012			2
<i>Neuraphes elongatulus</i>	2009	1907	2009	1970	1981	2
<i>Neuraphes talparum</i>	1957	1907	1957			0
<i>Scydmoraphes helvolus</i>	1907	1905	1907			0
<i>Stenichnus bicolor</i>	1907	1907	1907			0
<i>Stenichnus collaris</i>	2012	1899	2012	1905	1907	3
<i>Stenichnus scutellaris</i>	2012	1988	2012	1971	1971	2
<i>Stenichnus godarti</i>	2011	2011	2011			1
<i>Euconnus hirticollis</i>	2001	1899	1924	2001	2001	1
<i>Scydmaenus tarsatus</i>	2012	1903	2012	1905	1905	6
SCAPHIDIIDAE						
<i>Scaphidium quadrimaculatum</i>	2010	1985	1991	1918	2010	3
<i>Scaphisoma agaricinum</i>	2010	1905	1987	1904	2010	2
<i>Scaphisoma boleti</i>	1922	1901	1922			0
STAPHYLINIDAE						
<i>Micropeplus fulvus</i>	1993	1901	1993			2
<i>Micropeplus porcatus</i>	1937	1902	1937	1865	1865	0
<i>Micropeplus staphylinoides</i>	2004	1901	2004			2
<i>Micropeplus tesserula</i>	1907	1907	1907			0
<i>Metopsia retusa</i>	2001	1899	1993	1865	2001	3
<i>Megarthritis affinis</i>	2010	1992	2010			2
<i>Megarthritis denticollis</i>	2007	1899	2007			4
<i>Megarthritis depressus</i>	1993	1902	1993	1905	1985	3
<i>Megarthritis sinuatocollis</i>	2012	1903	2012	1905	2012	2
<i>Proteinus brachypterus</i>	2013	1898	2013	1905	2006	5
<i>Proteinus crenulatus</i>	1914	1907	1914	1913	1913	0
<i>Proteinus laevigatus</i>	2012	2007	2012			2
<i>Proteinus ovalis</i>	2003	1897	2013	1905	2006	3
<i>Anthobium atrocephalum</i>	2009	1899	2009			3
<i>Anthobium unicolor</i>	2012	1897	2012	1905	2007	5
<i>Olophrum assimile</i>	1984			1976	1984	0
<i>Olophrum fuscum</i>	2011	1905	2010	1905	2011	3
<i>Olophrum piceum</i>	2012	1898	2012	1905	2008	5
<i>Deliphrum tectum</i>	1964	1900	1907	1905	1964	0
<i>Arpedium brachypterus</i>	2011	1903	2008	1864	2011	4
<i>Acidota crenata</i>	2001	1899	1995	1960	2001	3
<i>Acidota cruentata</i>	1991	1907	1991	1978	1986	2
<i>Phyllodrepa crenata</i>	2011	1921	2011	2007	2011	3
<i>Lesteva hansenii</i>	1995			1995	1995	1
<i>Lesteva heeri</i>	2012	1898	2012	1904	2001	3
<i>Lesteva longoelytrata</i>	2010	1898	2010	1864	2004	4
<i>Lesteva monticola</i>	2010	1905	2010	1984	1996	3
<i>Lesteva pubescens</i>	2011	1897	2011	1865	1984	2
<i>Lesteva punctata</i>	2008	1901	2008	1865	1984	3
<i>Geodromicus longipes</i>	1992	1839	1992	1865	1985	2
<i>Geodromicus nigrita</i>	2000	1845	2000	1864	1980	1
<i>Anthophagus alpinus</i>	1991	1908	2000?	1864	1985	2
<i>Anthophagus caraboides</i>	2002	1839	2002	1905	1905	2
<i>Eusphalerum luteum</i>	2010	1910	2001	1905	2010	2
<i>Eusphalerum minutum</i>	2011	1901	2011	1864	2010	3
<i>Eusphalerum primulae</i>	2008	1901	1995	2008	2008	2

Species	Cumbria latest year	VC 70 Cumberland		VC 69 Westmorland		Frequency
		first year	last year	first year	last year	
Eusphalerum sorbi	2003	1898	2003	1899	2000	3
Eusphalerum torquatum	2012	1901	2012	1905	2010	5
Acrulia inflata	2009			2009	2009	1
Phyllodrepa floralis	1993	1898	1993	1960	1960	1
Phyllodrepa puberula	2005	1900	2005			1
Dropephylla grandiloqua	2012	1990	2011	1984	2012	3
Dropephylla gracilicornis	1907	1905	1907			0
Dropephylla ioptera	2010	1900	2010	1905	2007	3
Dropephylla vilis	2012	1901	2006	1905	2012	4
Hapalaraea pygmaea	1991	1907	1907	1991	1991	1
Acrolocha sulcula	1905	1899	1905			0
Omalium allardi	1907	1901	1907			0
Omalium caesum	1991	1901	1907	1991	1991	1
Omalium excavatum	2010	1899	2010			2
Omalium exiguum	1984	1901	1907	1984	1984	0
Omalium italicum	1915	1901	1915			0
Omalium laeviusculum	1995	1904	1995	1960	1960	1
Omalium laticolle	1985	1902	1908	1985	1985	1
Omalium oxyacanthae	1917	1901	1917	1905	1907	0
Omalium riparium	2008	1898	2008	1992	1992	2
Omalium rivulare	2010	1897	2010	1905	1971	3
Omalium rugulipenne	1960	1898	1960			0
Omalium septentrionis	2007	1902	1960	2007	2007	1
Phloeonomus punctipennis	2010	1903	2010	1988	2002	3
Phloeonomus pusillus	2008	1899	2008	1905	1905	3
Phloeostiba plana	2011	1900	2011			2
Xylostiba monilicornis	2003			2003	2003	1
Xylodromus concinnus	1994	1901	1994	1905	1986	2
Xylodromus depressus	1995	1900	1995			1
Micralymma marina	1994	1907	1994			2
Philorinum sordidum	2012	1901	2010	1905	2012	4
Hadrognathus longipalpis	2012	1987	2012			3
Coryphium angusticolle	2012	1902	2012	1989	2009	3
Phloeocharis subtilissima	2010	1906	2010			3
Pseudopsis sulcata	1905	1905	1905			0
Deleaster dichrous	2010	1829	2010	1999	1999	2
Coprophilus striatulus	1907	1901	1907	1905	1905	0
Syntomium aeneum	2001	1901	2001	1929	1984	2
Bledius erraticus	1848	1848	1848			0
Bledius fergussoni	1987	1901	1987			1
Bledius fuscipes	2003	1943	2003	1960	1960	1
Bledius gallicus	2008	1901	2008			2
Bledius germanicus	2006	1899	2006	1937	1990	3
Bledius longulus	2004	1845	2004			2
Bledius opacus	2006	1900	2006	1960	1960	2
Bledius pallipes	2004	1900	2000	2004	2004	2
Bledius praetermissus	2000	1907	2000	1913	1913	2
Bledius subniger	1987	1987	1987	1960	1960	1
Bledius subterraneus	2004	1898	2004	2000	2004	4
Bledius terebrans	2004	1926	2004			2
Bledius tricornis	1835	1835	1835			0
Bledius unicornis	1980	1980	1980	1955	1955	0
Ochtheophilus aureus	2004	1900	2004	1997	1997	3
Ochtheophilus omalinus agg.	2004	1900	2004	2004	2004	3
Thinodromus arcuatus	2008	1897	2000	1905	2008	2
Carpelimus bilineatus	2000	1900	1993	1905	2000	2

Species	Cumbria latest year	VC 70 Cumberland		VC 69 Westmorland		Frequency
		first year	last year	first year	last year	
Carpelimus corticinus	2010	1902	2010			3
Carpelimus elongatulus	2009	1901	2009	2001	2007	3
Carpelimus fuliginosus	1998	1906	1998			1
Carpelimus halophilus	1922	1922	1922			0
Carpelimus impressus	2000	2000	2000	2000	2000	2
<i>Carpelimus gracilis</i>	2007	2007	2007			1
Carpelimus pusillus	2005	1902	2005	1905	2004	2
Carpelimus rivularis	2008	1900	2008	1905	2004	2
Carpelimus schneideri	1990	1907	1990	1990	1990	2
Carpelimus subtilicornis	2000	2000	2000			1
Carpelimus zealandicus	2001	2001	2001	1993	1993	2
Thinobius bicolor	1995	1905	1906	1995	1995	1
Thinobius newberyi	1911	1907	1911			0
Thinobius strandi	2004	1905	2004			1
Platystethus arenarius	2004	1897	1993	1905	2004	3
Platystethus cornutus	2004	1901	2000	2004	2004	2
Anotylus complanatus	2011	1903	2010	1960	2011	3
Anotylus fairmairei	1925	1905	1925			0
Anotylus inustus	2008	1901	2008	1998	1998	4
Anotylus maritimus	1999	1899	1999	1960	1960	2
Anotylus mutator	1998	1998	1998			1
Anotylus nitidulus	1995	1899	1995	1905	1907	1
Anotylus rugosus	2012	1897	2012	1905	2010	5
Anotylus sculpturatus	2011	1899	2011	1913	2009	5
Anotylus tetracarinated	2009	1899	2009	1903	2001	4
Oxytelus fulvipes	1983			1983	1983	0
Oxytelus laqueatus	2010	1898	2010	1905	2007	5
Oxytelus sculptus	2008	1901	2008	1905	1905	3
Stenus aceris	2010	1907	2010	2010	2010	5
Stenus argus	2008	1904	2008	2004	2004	3
Stenus ater	2011	1926	2008	2006	2011	3
Stenus atratulus	1922	1905	1922			0
Stenus bifoveolatus	2012	1901	2012	1977	2010	4
Stenus biguttatus	2004	1880?	2004	2004	2004	2
Stenus bimaculatus	2012	1897	2012	1971	2009	4
Stenus binotatus	2011	1900	2011	2002	2010	3
Stenus boops	2011	1901	2010	1960	2011	4
Stenus brevipennis	2011	1905	2011	1984	2011	2
Stenus brunnipes	2011	1898	2011	1905	2009	6
Stenus canaliculatus	2008	1880?	2008	1960	2003	3
Stenus carbonarius	2012	1905	2012	1960	1960	2
Stenus cicindeloides	2012	1901	2012	1960	2004	5
Stenus clavicornis	2012	1898	2012	1905	2012	5
Stenus comma	2004	1835	2004			1
Stenus crassus	2003	2000	2003			2
Stenus flavipes	2012	1899	2012	1905	2012	4
Stenus formicetorum	2009			1986	2009	2
Stenus fossulatus	2009	1899	2009			2
Stenus fulvicornis	2012	1898	2012	1972	2012	4
Stenus fuscicornis	1989	1989	1989			1
Stenus fuscipes	2011	1902	2011			2
Stenus geniculatus	2012	1992	2012	1976	2011	2
Stenus guttula	2008	1898	2008	1864	2008	4
Stenus guynemeri	1998	1894	1998	1864	1995	3
Stenus impressus	2012	1901	2012	1905	2012	6
Stenus incanus	1926	1901	1926			0

Species	Cumbria latest year	VC 70 Cumberland		VC 69 Westmorland		Frequency
		first year	last year	first year	last year	
<i>Stenus incrassatus</i>	1987	1987	1987			1
<i>Stenus juno</i>	2012	1897	2011	1971	2012	5
<i>Stenus latifrons</i>	2010	1845	2008	2001	2010	4
<i>Stenus lustrator</i>	1998	1909	1998	1971	1998	2
<i>Stenus melanarius</i>	2012	1901	2012	1984	1984	2
<i>Stenus melanopus</i>	1999	1999	1999			1
<i>Stenus morio</i>	1905	1905	1905			0
<i>Stenus nanus</i>	2006	1898	2006	1905	1986	3
<i>Stenus nigrutilus</i>	2004	1918	2004			3
<i>Stenus nitens</i>	2008	1999	2008	1971	1971	2
<i>Stenus nitidiusculus</i>	2012	1899	2012	1910	2011	6
<i>Stenus niveus</i>	1999	1905	1999	1995	1995	2
<i>Stenus ochropus</i>	2009	1880?	1901	2009	2009	1
<i>Stenus oscillator</i>	1999	1998	1999	1995	1995	2
<i>Stenus ossium</i>	2008	1898	2008	1960	1971	3
<i>Stenus pallipes</i>	2011	1991	2010	2011	2011	3
<i>Stenus pallitarsis</i>	2011	1899	2011	1993	2009	5
<i>Stenus picipennis</i>	1999	1904	1999			2
<i>Stenus picipes</i>	2011	1901	2011	1905	2011	5
<i>Stenus providus</i>	2012	1901	2011	1971	2012	5
<i>Stenus pubescens</i>	2006	1901	2006	1993	2001	4
<i>Stenus pusillus</i>	2008	1901	2007	1960	2008	3
<i>Stenus similis</i>	2012	1897	2012	1905	2012	7
<i>Stenus solutus</i>	2012	2010	2012	2012	2012	2
<i>Stenus subaeneus</i>	2006	2006	2006			1
<i>Stenus tarsalis</i>	2012	1897	2012	1971	2012	7
<i>Stenus umbratilis</i>	2007	2006	2007			2
<i>Dianous coerulescens</i>	2004	1894	2004	1864	2001	3
<i>Euaesthetus bipunctatus</i>	1993	1905	1993			1
<i>Euaesthetus laeviusculus</i>	2003	1902	2003	1984	1986	2
<i>Euaesthetus ruficapillus</i>	2012	1902	2012	2001	2001	3
<i>Paederus litoralis</i>	1835	1835	1835			0
<i>Paederus fuscipes</i>	2004	1901	2004			3
<i>Lathrobium angusticolle</i>	1999	1901	1999			1
<i>Lathrobium brunnipes</i>	2012	1897	2012	1905	2011	6
<i>Lathrobium elongatum</i>	2002	1901	2002	1960	1960	2
<i>Lathrobium fovulum</i>	1986			1984	1986	1
<i>Lathrobium fulvipenne</i>	2011	1897	2011	1905	2004	6
<i>Lathrobium geminum</i>	2008	1902	2008	1905	2002	4
<i>Lathrobium longulum</i>	2012	1908	2012	1971	1971	2
<i>Lathrobium multipunctum</i>	2000	1905	2000	1943	1960	3
<i>Lathrobium quadratum</i>	2002	1900	2002			2
<i>Lathrobium ripicola</i>	2010	1901	2010	2004	2004	2
<i>Lathrobium terminatum</i>	2008	1901	2008	1960	2010	4
<i>Lathrobium zetterstedti</i>	2006	1899	2006	1979	1998	2
<i>Ochtheophilum fracticorne</i>	2012	1899	2012	1971	2010	5
<i>Medon brunneus</i>	2008	2008	2008	1971	1971	1
<i>Medon ripicola</i>	1920	1920	1920			0
<i>Lithocharis nigriceps</i>	2010	1992	2010			4
<i>Lithocharis obsoleta</i>	1907	1904	1907			0
<i>Lithocharis ochracea</i>	2010	1901	2010			4
<i>Scopaeus sulcicollis</i>	2001	1903	1903	2001	2001	1
<i>Astenus lyonessius</i>	1910	1910	1910			0
<i>Rugilus erichsoni</i>	2008	1898	2002	1905	2008	2
<i>Rugilus orbiculatus</i>	2010	1903	2010	1905	1905	2
<i>Rugilus rufipes</i>	1989	1899	1989	1960	1960	1

Species	Cumbria latest year	VC 70 Cumberland		VC 69 Westmorland		Frequency
		first year	last year	first year	last year	
Sunius propinquus	2008			2008	2008	1
Othius angustus	2011	1898	2011	1905	2011	4
Othius laeviusculus	2002	1901	2002	2001	2001	3
Othius myrmecophilus	2012	1898	2011	1905	2012	5
Othius punctulatus	2009	1897	2009	1864	2007	5
Atrecus affinis	2012	1897	2012	1905	2010	6
Leptacinus bathycrus	1905	1905	1905			0
Leptacinus formicetorum	2011	1906	2011			2
Leptacinus pusillus	2010	1901	2010			3
Phacophallus parumpunctatus	1960	1908	1908	1960	1960	0
Nudobius lentus	2006	2005	2006	1971	1971	2
Gyrophypnus angustatus	2009	1901	2009	1905	2004	4
Gyrophypnus fracticornis	2009	1897	2009	1905	1984	4
Xantholinus glabratus	2003	1897	2003	1984	1986	4
Xantholinus elegans	2002			1984	2002	2
Xantholinus laevigatus	2002	2002	2002	1979	1979	1
Xantholinus linearis	2012	1897	2012	1905	2007	5
Xantholinus longiventris	2012	1901	2012	1905	2007	4
Neobisnius lathrobioides	2000	1901	2000			1
Neobisnius procerulus	2001	2001	2001			1
Neobisnius prolixus	2001	1999	2001			3
Neobisnius villosulus	2000			2000	2000	1
Erichsonius cinerascens	2007	1900	2007	2000	2000	2
Erichsonius signaticornis	1997	1909	1997			2
Philonthus addendus	2010	1989	2010	1960	2006	2
Philonthus agilis	1943	1943	1943			0
Philonthus albipes	2007	1898	2007	1864	1960	2
Philonthus atratus	2008	2008	2008			1
Philonthus cephalotes	2004	1898	2004	1905	1907	3
Philonthus cognatus	2012	1897	2012	1943	2007	6
Philonthus concinnus	2007	1900	2007			1
Philonthus corvinus	1915	1902	1915			0
Philonthus cruentatus	2009	1905	1905	1960	2009	1
Philonthus debilis	2007	1903	2007			1
Philonthus decorus	2012	1897	2012	1905	2008	5
Philonthus discoideus	2008	1902	2008			1
Philonthus ebeninus	1935	1905	1935			0
Philonthus fimetarius	2012	1898	2012	1905	2010	7
Philonthus fumarius	2005	2005	2005			1
Philonthus rufipes	2008	1898	2008			1
Philonthus intermedius	1994	1900	1994			2
Philonthus jurgans	1940	1927	1940			0
Philonthus laminatus	2011	1897	2011	1905	2004	5
Philonthus longicornis	2008	1905	2008	1864	1864	2
Philonthus mannerheimi	1997	1845	1997	1979	1979	1
Philonthus marginatus	2012	1899	2012	1905	2010	5
Philonthus micans	2007	1906	2007	1905	2005	3
Philonthus micantoides	2003	1992?	2003			2
Philonthus nigrita	2012	1900	2012	1905	2001	4
Philonthus nigriventris	1984	1900	1925	1971	1984	0
Philonthus politus	2011	1897	2011	1905	2006	4
Philonthus puella	2012	1899	2009	1905	2012	3
Philonthus quisquiliarius	1987	1987	1987			1
Philonthus rectangulus	2006	1943	2006			3
Philonthus rotundicollis	2004	1845	1954	2000	2004	2
Philonthus rubripennis	2004	1898	2004	1905	2004	4

Species	Cumbria latest year	VC 70 Cumberland		VC 69 Westmorland		Frequency
		first year	last year	first year	last year	
Philonthus sanguinolentus	2010	1897	2010			2
Philonthus sordidus	2012	1898	2012	1998	2010	4
Philonthus splendens	2009	1897	2009	1905	1986	4
Philonthus succicola	2012	1900	2010	1905	2012	3
Philonthus tenuicornis	2012	1900	2011	1905	2012	3
Philonthus umbratilis	2007	1845	2007	1905	1960	2
Philonthus varians	2007	1897	2006	1905	2007	5
Philonthus varius	2011	1898	2011	1905	2009	7
Philonthus ventralis	2012	1900	2012			2
Gabrius appendiculatus	1984	1901	1922	1984	1984	0
Gabrius bishopi	2007	1901	2004	1960	2007	3
Gabrius breviventer	2012	1905	2012			3
Gabrius exiguus	1965	1965	1965			0
Gabrius nigrutilus	1999	1901	1999	1992	1992	2
Gabrius osseticus	2010	1903	2010			2
Gabrius piliger	2012	1905	2012	1960	1960	3
Gabrius splendidulus	2011	1991	2011	1989	2007	3
Gabrius trossulus	2010	1897	2010	1984	1986	2
Gabrius velox	2001	1942	2001	2001	2001	2
Cafius fucicola	1905	1905	1905			0
Cafius xantholoma	2008	1898	2008	1960	1960	3
Platydracus fulvipes	1973	1898	1973			0
Platydracus latebricola	2002			2001	2002	2
Platydracus pubescens	1993	1898	1993	1905	1918	1
Platydracus stercorarius	2006	1898	2001	1981	2006	2
Ocypus aeneocephalus	2012	1897	2012	1984	2007	4
Ocypus ater	2012	1992	2012	1968	2007	3
Ocypus brunnipes	2011	1897	2008	1971	2011	3
Staphylinus dimidiaticornis	1931	1931	1931	1908	1908	0
Tasgius morsitans	2007			1978	2007?	1
Staphylinus erythropterus	2008	1897	2008	1899	2005	3
Ocypus fuscatus	1952	1903	1952			0
Ocypus melanarius	2012	1897	2009	1968	2012	4
Ocypus nero	2002	1845	1996	1943	2002	3
Ocypus olens	2011	1897	2011	1943	2007	5
Ocypus winkleri	1996	1996	1996			1
Creophilus maxillosus	2006	1897	2006	1905	1991	2
Ontholestes murinus	2003	1899	2003			2
Ontholestes tessellatus	2002	1898	1993	1971	2002	2
Heterothops binotata	2008	1898	2008	1992	1992	2
Heterothops minutus	2012	2010	2012			2
Heterothops praevia	2011	1906	2011			2
Euryporus picipes	2001	1900	1907	2001	2001	1
Quedius aridulus	2012	1989?	2012	2001	2011	3
Quedius auricomus	2012	1845	2012	1865	1995	4
Quedius boopoides	2008	1911	2008	1971	2004	4
Quedius boops (arestor) agg.	2011	1897	2011	1905	2002	3
Quedius brevis	1960	1907	1960			0
Quedius cinctus	2011	1898	2011	1905	1960	2
Quedius cruentus	2010	1901	2010	2010	2010	3
Quedius curtipennis	2012	1905	2012	1943	2008	5
Quedius fulgidus	1960	1908	1960			0
Quedius fuliginosus	2012	1897	2012	1938	2011	5
Quedius fulvicollis	2009	1898	2009	1905	2009	2
Quedius fumatus	2010	1901	2010	1864	2007	3
Quedius simplicifrons	2006	1987	2006	1957	1957	3

Species	Cumbria latest year	VC 70 Cumberland		VC 69 Westmorland		Frequency
		first year	last year	first year	last year	
Quedius humeralis	1910	1905	1910			0
Quedius invreae	1995	1903	1988	1995	1995	2
Quedius lateralis	2008	1899	2008	1960	2002	3
Quedius longicornis	2006	1905	2006	1906	1972	1
Quedius maurorufus	2012	1901	2012	1905	2001	4
Quedius maurus	2002	1946	1995	1905	2002	2
Quedius mesomelinus	2013	1897	2013	1905	1991	5
Quedius molochinus	2010	1897	2010	1905	2001	4
Quedius nigriceps	2002	1899	2002	1905	1980	2
Quedius nigrocaeruleus	1993	1911	1993			1
Quedius nitipennis	2010	1897	2010	1864	2010	3
Quedius picipes	2010	1901	2010	1984	2008	2
Quedius plagiatus	2012	1991	2012	1960	2012	5
Quedius puncticollis	1981	1906	1981	1971	1972	0
Quedius schatzmayri	2010	1901	2010	2001	2001	4
Quedius scintillans	2004	1901	2004	1905	1905	1
Quedius scitus	1907	1907	1907			0
Quedius semiaeneus	2004	1897	2004	1960	1983	2
Quedius semiobscurus	2011	1897	2011	1905	1998	4
Quedius tristis	2008	1897	2008	1905	2002	4
Quedius umbrinus	2008	1897	2008	1864	1999	4
Quedius xanthopus	2009	1900	2009	1864	1997	3
Habrocera capillaricornis	2011	1901	2011	1971	1982	2
Mycetoporus angularis	1995	1922	1995			1
Mycetoporus clavicornis	2002	1899	2002	1905	1986	2
Mycetoporus despectus	2010	2007	2010	1976	1979	2
Mycetoporus erichsonanus	1992	1992	1992			1
Mycetoporus lepidus	2001	1899	2001	1984	2001	3
Mycetoporus longicornis	1982			1982	1982	0
Mycetoporus longulus	2000	1901	2000	1905	1986	3
Mycetoporus nigricollis	2006	1990	2006			3
Mycetoporus punctus	2009	1901	2009	1984	1984	2
Mycetoporus rufescens	2010	1905	1993	1984	2010	2
Mycetoporus splendidus	2011	1899	2011	1905	1971	3
Bryoporus maklini	2009	1912	2009	1984	1984	2
Lordithon exoletus	2007	1899	2007			2
Lordithon lunulatus	2011	1898	2011	1905	1905	2
Lordithon thoracicus	2010	1898	2010	1905	2010	3
Lordithon trinotatus	2012	1898	2012	1971	2007	5
Bolitobius analis	2006	1897	2006	1905	2010	2
Bolitobius cingulatus	2009	1845	2009	1971	1986	2
Bolitobius inclinans	1986	1897	1904	1976	1986	1
Sepedophilus constans	1869	1869	1869			0
Sepedophilus immaculatum	1910	1898	1910			0
Sepedophilus littoreum	2010	1897	2010	1960	1960	1
Sepedophilus marshami	2005	1897	2005	1905	1971	2
Sepedophilus nigripennis	2005	1898	2005	1986	2012	3
Tachyporus atriceps	2009	1901	2009	1960	1986	3
Tachyporus chrysomelinus	2013	1897	2013	1905	2008	7
Tachyporus dispar	2012	1996	2012	1993	2007	4
Tachyporus formosus	1993	1907	1993	1960	1960	1
Tachyporus hypnorum	2010	1897	2010	1905	2007	5
Tachyporus nitidulus	2012	1897	2012	1905	2012	5
Tachyporus obtusus	2013	1897	2013	1905	2007	5
Tachyporus pallidus	2008	1903	2008			3
Tachyporus pusillus	2011	1897	2011	1905	1986	4

Species	Cumbria latest year	VC 70 Cumberland		VC 69 Westmorland		Frequency
		first year	last year	first year	last year	
Tachyporus solutus	2012	1901	2012	1913	2012	4
Tachyporus tersus	2007	1898	2007			1
Tachyporus transversalis	2010	1898	2010			2
Lamprinodes saginatus	1902	1845	1902			0
Tachinus corticinus	2006	1897	2004	1905	2006	2
Tachinus elongatus	2012	1845	2012	1864	2010	2
Tachinus humeralis	2011	1902	2011	1905	1913	2
Tachinus laticollis	2012	1909	2012	1864	2010	4
Tachinus lignorum	1909	1845	1909			0
Tachinus marginellus	2009	1897	2009	1905	2010	5
Tachinus pallipes	2007	1910	2007			2
Tachinus proximus	2010	1902	2010			2
Tachinus rufipennis	1903	1902	1903			0
Tachinus scapularis	1908	1908	1908			0
Tachinus signatus	2012	1897	2012	1905	2010	6
Tachinus subterraneus	2010	1897	2010	1905	1960	3
Cilea silphoides	1907	1901	1907			0
Gymnusa brevicollis	2002	1899	2002			1
Gymnusa variegata	2001	1845	1999	1999	2001	2
Cypha hansenii	1993	1993	1993			1
Cypha imitator	1908	1908	1908			0
Cypha laeviuscula	2011	1901	2011	1905	2011	3
Cypha longicornis	2006	1901	2006	1905	1905	2
Cypha pulicaria	1922	1922	1922	2010	2010	1
Cypha punctum	1908	1905	1908	1905	1905	0
Oligota apicata	2005	1925	2005			2
Oligota parva	2008	2007	2008			2
Oligota inflata	2010	1899	2010	1905	1905	4
Oligota picipes	1905	1905	1905			0
Oligota punctulata	2009	2009	2009			1
Oligota pusillima	1993	1905	1993			1
Myllaena brevicornis	2012	1899	2012	1971	2010	4
Myllaena dubia	2003	1902	2003			1
Myllaena elongata	2000	1902	2000	1997	1998	2
Myllaena gracilis	2003	1992	2003			2
Myllaena infuscata	2008	1902	2008			3
Myllaena kraatzi	2004	2004	2004			1
Myllaena minuta	2012	1991	2012	2001	2001	2
Diglotta submarina	1905	1905	1905			0
Hygronoma dimidiata	1998	1906	1998			2
Encephalus complicans	2008	1904	2007	2008	2008	2
Gyrophæna affinis	2009	1901	2009	1960	2002	2
Gyrophæna angustata	2010	1900	2003	2010	2010	2
Gyrophæna bihamata	2008	1901	2008			3
Gyrophæna congrua	1915	1915	1989?			1
Gyrophæna fasciata	2012	1905	2012			2
Gyrophæna gentilis	2012	1898	2012			2
Gyrophæna latissima	2009	1908	2009			1
Gyrophæna nana	2012	1901	2008	2012	2012	3
Gyrophæna strictula	2008	1905	2008			3
Placusa depressa	2008	1900	2008			1
Homalota plana	2011	1905	2011	2007	2007	2
Anomognathus cuspidatus	2011	1901	1907	2011	2011	1
Phytosus balticus	1972	1904	1972	1960	1960	0
Phytosus nigriventris	1938	1938	1938			0
Leptusa fumida	2013	1899	2013	1971	2002	5

Species	Cumbria latest year	VC 70 Cumberland		VC 69 Westmorland		Frequency
		first year	last year	first year	last year	
Leptusa norvegica	1997	1992	1997			2
Leptusa pulchella	2012	2009	2012			2
Leptusa ruficollis	2011	1900	2011	1988	2009	3
Bolitochara bella	2012			2012	2012	1
Bolitochara lucida	2007	1845	2007	1904	1993	2
Bolitochara obliqua	201	1899	2011	1905	2006	4
Bolitochara pulchra	2007	1905	2007			1
Autalia impressa	1999	1897	1999			3
Autalia longicornis	1995	1989	1995			3
Autalia puncticollis	1984	1910	1910	1984	1984	0
Autalia rivularis	2009	1901	2009	1984	2001	5
Cordalia obscura	2002	1901	2002	1960	1960	2
Falagria caesia	1960	1902	1905	1960	1960	0
Falagria sulcatula	1903	1903	1903			0
Falagria thoracica	1926	1910	1926			0
Myrmecopora sulcata	1995	1910	1995			1
Myrmecopora uvida	1995	1995	1995			1
Tachyusa atra	1993	1901	1993			1
Tachyusa constricta	2004	1845	2004	2000	2004	3
Tachyusa leucopus	2004	1898	2004	1864	2004	3
Tachyusa scitula	1907	1845	1907			0
Tachyusa umbratica	2000	1993	2000			2
Gnypeta caerulea	1993	1901	1993	1899	1905	1
Gnypeta carbonaria	2005	1899	2005			2
Callicerus obscurus	2010	1905	2010	2004	2007	2
Callicerus rigidicornis	2011	1906	2011	1960	1960	1
Schistoglossa aubei	1907	1905	1907			0
Schistoglossa curtippennis	1986	1901	1908	1984	1986	1
Schistoglossa gemina	2010	1908	2010	1984	2001	2
Boreophila eremita	2011	1903	2011	1984	2011	4
Hydrosmeeta delicatula	2001	2001	2001	1995	1995	2
Hydrosmeeta eximia	2005	2004	2005			2
Hydrosmeeta fragilis	1912	1903	1912			0
Hydrosmeeta thinobioides	2000	1905	2005	1996	1997	3
Hydrosmeeta septentrionum	2005	1905	2005	2000	2004	3
Aloconota cambrica	2010	1901	2010	1999	2000	5
Aloconota currax	2010	1899	2010	1865	2005	3
Aloconota gregaria	2012	1897	2012	1913	2007	4
Aloconota insecta	2011	1845	2005	2005	2011	3
Aloconota sulcifrons	2005	1901	2005	2005	2005	2
Amischa analis	2012	1899	2012	1905	2011	5
Amischa cavifrons (=bifoveolata)	2012	1905	2012	1905	1986	3
Amischa decipiens	2006	2004	2006			2
Amischa forcipata	2007	1901	2007			1
Amischa nigrofusca	2010	1901?	2010			1
Amidobia talpa	2011	1906	2011			1
Nehemitropia lividipennis	2012	1899	2012	2010	2010	4
Notothecta flavipes	2011	1906	2011			2
Lyprocorrhe anceps	2011	1906	2011			1
Geostiba circellaris	2012	1899	2012	1905	2011	5
Dinaraea aequata	2012	1910	2012	1971	2011	4
Dinaraea angustula	2008	1905	2008			2
Dinaraea linearis	2011	1899	2011			2
Dochmonota clancula	1942	1942	1942			0
Dadobia immersa	1960	1899	1960			0
Platarea brunnea	2006	1898	2006			2

Species	Cumbria latest year	VC 70 Cumberland		VC 69 Westmorland		Frequency
		first year	last year	first year	last year	
Liogluta granigera	1991	1905	1991			1
Liogluta longiuscula	2003	1897	2003	1905	2001	2
Liogluta alpestris	2012	1901	2012	1976	2010	3
Liogluta oblongiuscula	1999	1905	1999	2002?	2007?	2
Liogluta pagana	2008	1910	2008	1905	1905	1
Philhygra arctica	2011	1921	2011	1984	2010	2
Philhygra britteni	1911	1911	1911			0
Philhygra debilis	2010	1899	2009	2010	2010	2
Philhygra elongatula	2010	1899	2010	1905	2008	5
Philhygra fallaciosa	2010	1905	2010			2
Philhygra gyllenhali	2010	1905	2010			2
Philhygra hygrobica	2011	2009	2009	2011	2011	2
Philhygra hygrotopora	2010	1901	2010	2010	2010	2
Philhygra luridipennis	1998	1900	1998			2
Philhygra malleus	2008	1914	2008	2004	2004	2
Philhygra melanocera	2008	1905	2008	1991	2003	3
Philhygra obtusangula	2001			2001	2001	1
Philhygra palustris	1984			1984	1984	0
Philhygra scotica	2006			2006	2006	1
Philhygra volans	1996	1904	1996	1905	1905	1
Atheta (Enalodroma) hepatica	2007	1903	1908	2007	2007	1
Atheta (Bessobia) excellens	1986	1905	1943	1984	1986	1
Atheta (Bessobia) fungivora	2008	1901	2008			2
Atheta (Bessobia) monticola	1905	1905	1905			0
Atheta (Bessobia) occulta	1910	1865	1910			0
Atheta diversa	2005	2005	2005			1
Atheta divisa	1925	1903	1925			0
Atheta euryptera	2009	1901	2009	1913	1913	2
Atheta nigricornis	2007	1901	1907	1971	2007	1
Atheta nigrifolia	1989	1903	1989	1913	1913	1
Atheta (Anopleta) corvina	2011	1905	2011			2
Atheta (Microdota) amacula	2010	1901	2010	2000	2009	4
Atheta (Microdota) atricolor	2010	1901	2010	1984	1986	2
Atheta (Microdota) excelsa	1905	1905	1905			0
Atheta (Microdota) indubia	2009	1904	2009	1913	2000	2
Atheta (Microdota) inquilina	1905	1905	1905			0
Atheta (Pachyatheta) cribrata	1984			1984	1984	0
Atheta (Cadaverota) cadaverina	2011	1912	2011	1971	1986	1
Atheta (Alaobia) gagatina	2010	1899	2010			2
Atheta (Alaobia) hybrida	1984	1927	1927	1984	1984	0
Atheta (Alaobia) picipes	2011	1909	2011			2
Atheta (Alaobia) sodalis	2003	1901	2003	1905	1984	2
Atheta (Alaobia) subglabra	2005	2005	2005	2005	2005	2
Atheta (Alaobia) trinotata	2009	1899	2009	1864	1907	3
Atheta (Oreostiba) tibialis	2009	1901	2009	1865	2007	4
Atheta (Coprothassa) melanaria	1907	1905	1907			0
Atheta (Mocyta) amplicollis	2010	2000	2010	2005	2005	3
Atheta (Mocyta) clientula	2010	1901	2003	1905	2010	2
Atheta (Mocyta) fungi	2010	1899	2010	1905	2009	7
Atheta (Mocyta) orbata	2004	1905	2004			2
Atheta (Acrotona) aterrima	2010	1901	2010	1905	2005	3
Atheta (Acrotona) exigua	1985	1907	1907	1984	1985	1
Atheta (Acrotona) muscorum	2009	1901	2009	1905	1905	2
Atheta (Acrotona) obfuscata	2004	1996	2004			2
Atheta (Acrotona) parvula	2009	1901	2009			1
Atheta (Acrotona) pygmaea	2005	1905	2005	2004	2004	2

Species	Cumbria latest year	VC 70 Cumberland		VC 69 Westmorland		Frequency
		first year	last year	first year	last year	
Atheta (Rhagocneme) subsinuata	1989	1914	1989			1
Atheta (Datomicra) canescens	1907	1905	1907			0
Atheta (Datomicra) celata	2008	1901	2008	1984	1986	2
Atheta (Datomicra) nigra	2010	1901	2010	1864	2010	4
Atheta (Datomicra) sordidula	1907	1905	1907			0
Atheta (Datomicra) zosteræ	1905	1905	1905			0
Atheta aeneicollis	2010	1901	2010	2007	2007	2
Atheta aquatica	2010	1901	2010	1905	2006	3
Atheta aquatilis	2007			2007	2007	1
Atheta brunneipennis	2010	1901	2010			2
Atheta castanoptera	2010	1899	2010	1864	2007	4
Atheta graminicola	2008	1899	2008	2006	2010	4
Atheta hypnorum	2010	1899	2010	1971	2007	2
Atheta incognita	1999	1907	1999			1
Atheta triangulum	1907	1865	1907	1864	1864	0
Atheta xanthopus	2008	1901	2008	2000	2000	2
Atheta basicornis	1910	1906	1910			0
Atheta britanniae	2010	1901	2009	1905	2010	2
Atheta coriaria	2008	1907	2008	1864	1864	2
Atheta crassicornis	2010	1901	2010	1905	2006	4
Atheta fungicola	2008	1905	2008			2
Atheta intermedia	1907	1905	1907			0
Atheta (Mycetota) laticollis	2010	1899	2009	2010	2010	3
Atheta oblita	2010	1903	2010			3
Atheta pilicornis	2009	1900	2009			1
Atheta ravilla	2010	1907	2010			2
Atheta strandiella	2006			2006	2006	1
Atheta (Dimetrota) atramentaria	2010	1901	2010	1905	2008	5
Atheta (Dimetrota) cinnamoptera	1927	1899	1927			0
Atheta (Dimetrota) ischnocera	1991	1901	1991			1
Atheta (Dimetrota) laevana	1906	1905	1906			0
Atheta (Dimetrota) macrocera	1923	1910	1923	1913	1913	0
Atheta (Dimetrota) marcida	2008	1905	2008			3
Atheta (Dimetrota) nigripes	2008	1903	2008	1984	2001	2
Atheta (Dimetrota) puncticollis	2005	2005	2005	1968	1968	1
Atheta (Dimetrota) setigera	2009	1957	2009	1984	1984	1
Atheta (Chaetida) longicornis	2009	1899	2009	1905	2000	4
Atheta (Brundinia) marina	2011	1901	2008	2011	2011	2
Atheta (Thinobaena) vestita	2008	1898	2008	1960	2007	4
Halobrecta algae	1905	1905	1905			0
Halobrecta flavipes	1995	1903	1995			2
Alianta incana	2003	1931	2003			1
Trichiura immigrata	2010	2006	2010			3
Drusilla canaliculata	2011	1898	2011	1905	2010	5
Zyras collaris	2004	1901	2004			1
Zyras humeralis	1927	1898	1927			0
Zyras limbatus	2001	1926	1985	2001	2001	2
Lomechusa emarginata	1979			1956	1979	0
Dinarda maerkeli	1906	1906	1906			0
Phloeopora scribae	2009	2003	2009			2
Phloeopora corticalis	1993	1993	1993			1
Phloeopora testacea	2010	1901	2010	2006	2006	5
Ilyobates benettii	1907	1845	1907			0
Calodera aethiops	1960	1903	1926	1960	1960	0
Calodera riparia	2002	1906	2002			2
Chiloporata longitarsis	2004	1904	2004			2

Species	Cumbria latest year	VC 70 Cumberland		VC 69 Westmorland		Frequency
		first year	last year	first year	last year	
Chiloporata rubicunda	1845	1845	1845			0
Amarochara umbrosa	1903	1903	1903			0
Ocalea badia	1992	1845	1992	1960	1960	1
Ocalea picata	2009	1898	2009	1864	1984	3
Ocalea rivularis	1993	1897	1993			2
Meotica anglica	1915	1905	1915			0
Meotica apicalis	2006	1906	2006			1
Ocyusa defecta	1913			1913	1913	0
Ocyusa hibernica	2008	2008	2008	1984	1986	2
Ocyusa maura	1999	1904	1999	1960	1960	1
Mniusa incrassata	2011	1905	2008	1960	2011	4
Oxypoda alternans	2010	1898	2010	1971	1971	4
Oxypoda amoena	2008	1913	2008			1
Oxypoda annularis	2008	1905	2008	2001	2006	2
Oxypoda brachyptera	2000	1845	2000			1
Oxypoda carbonaria	1990	1907	1990			1
Oxypoda elongatula	2010	1898	2010	1960	2011	4
Oxypoda exoleta	2004	1901	2004			2
Oxypoda formiceticola	2011	1906	2011			1
Oxypoda haemorrhoea	2009	1901	2009			2
Oxypoda induta	1907	1905	1907			0
Oxypoda islandica	2008	1904	2008	1979	1986	2
Oxypoda lentula	2008	1906	2008			2
Oxypoda lividipennis	2006	1901	2006	1905	1905	2
Oxypoda nigricornis	2007	2007	2007			1
Oxypoda opaca	2008	1897	2008	1905	1986	3
Oxypoda procerula	2010	1994	2010	2001	2002	4
Oxypoda soror	1989	1911	1989	1984	1986	2
Oxypoda spectabilis	1984	1898	1910	1984	1984	0
Oxypoda tarda	1905	1903	1905			0
Oxypoda tirolensis	2003	1901	2003	1984	1984	1
Oxypoda umbrata	2010	1901	2010	1984	2001	4
Oxypoda vittata	1910	1907	1910			0
Ischnoglossa prolixa	2011	1897	2011	2006	2006	3
Dexiogyia corticina	2007	1835	2007			1
Thiasophila angulata	2011	1906	2011	1997	1997	2
Cratarea suturalis	2009	1906	2009	1960	1960	2
Haploglossa nidicola	1999	1904	1999			1
Haploglossa pulla	1907	1903	1907			0
Tinotus morion	2010	1900	2010	1905	1986	3
Aleochara bilineata	2004	1901	1910	2004	2004	1
Aleochara bipustulata	2011	1897	2011	1905	2007	2
Aleochara brevipennis	2011	1908	2011			2
Aleochara cuniculorum	1996	1901	1996			1
Aleochara curtula	2011	1897	2011	1905	2006	3
Aleochara discipennis	1920	1920	1920			0
Aleochara funebris	1959	1897	1959			0
Aleochara fumata	1908	1908	1908			0
Polystomota grisea	1996	1900	1996	1960	1960	2
Polystomota intricata	1996	1900	1996	1913	1996	2
Aleochara lanuginosa	2010	1897	2010	1905	2010	5
Aleochara lygaea	1910	1909	1910			0
Aleochara moerens	1997	1907	1997			1
Aleochara ruficornis	2007	1901	1915	2007	2007	1
Aleochara spadicea	1960	1863	1960			0
Aleochara sparsa agg.	2009	1900	2009	1905	1905	2

Species	Cumbria latest year	VC 70 Cumberland		VC 69 Westmorland		Frequency
		first year	last year	first year	last year	
Emplenota algarum	1902	1901	1902			0
Emplenota punctatella	1993	1898	1993			1
Aleochara villosa	1960	1905	1907	1960??	1960??	0
PSELAPHIDAE						
Bibloporus bicolor	2002	1904	1993	2002	2002	2
Biblopectus ambiguus	2001	1905	2001	2001	2001	2
Biblopectus minutissimus	1906	1906	1906			0
Biblopectus pusillus	1905	1905	1905			0
Biblopectus spinosus	1905	1905	1905			0
Euplectus karsteni	1922	1901	1922			0
Euplectus kirbyi	1905	1905	1905			0
Euplectus piceus	1990	1906	1990			1
Euplectus sanguineus	2009	1905	2009	1905	1905	3
Euplectus signatus	2009	2009	2009			1
Trichonyx sulcicollis	1835	1835	1835			0
Batrisus venustus	1903	1903	1903			0
Bythinus burrelli	2008	1905	2008	1944	1944	1
Bythinus macropalpus	1944	1845?	1901	1944	1944	0
Bryaxis bulbifer	2010	1898	2010	1905	2001	3
Bryaxis curtisi	2006	1904	2006	1944	2006	2
Bryaxis puncticollis	2011	1899	2006	1905	2011	4
Tychus niger	1996	1899	1996			1
Brachygluta fossulata	2007	1898	2007	1905	1905	2
Brachygluta haematica	2009	1845?	2009			1
Brachygluta pandellei	2000	2000	2000			1
Reichenbachia juncorum	2006	1899	2006	1905	1905	2
Rybaxis longicornis	2009			2009	2009	1
Trissemus impressus	1829	1829	1829			0
Pselaphaulax dresdensis	1988	1902	1977	1988	1988	1
Pselaphus heisei	2007	1899	2007	1971	2002	4
LUCANIDAE						
<i>Lucanus cervus</i>	1967	1908	1960	1908	1967	0
Sinodendron cylindricum	2006	1897	2005	1904	2006	5
TROGIDAE						
Trox sabulosus	1900	1900	1900			0
Trox scaber	2004	1905	2004			2
GEOTRUPIDAE						
Typhaeus typhoeus	2003	1899	2003	1905	2000	3
Geotrupes spiniger	2007	1901	2007	1905	2005	3
Geotrupes stercorarius	2002	1897	2001	1905	2002	3
Geotrupes stercorosus	2010	1897	2010	1904	2003	7
Geotrupes vernalis	2011	1898	2011	1964	1995	2
SCARABAEIDAE						
Aegialia arenaria	1999	1898	1999	1960	1985	3
Aegialia sabuleti	2004	1899	2004			2
Aphodius ater	2010	1898	2010	1904	2010	5
Aphodius borealis	1998	1943	1998			3
Aphodius conspurcatus	1964	1899	1952?	1905	1964	0
Aphodius constans	1956	1940	1940	1904	1956	0
Aphodius contaminatus	2009	1898	2009	1905	1998	6
Aphodius depressus	2010	1897	2010	1864	2010	6
Aphodius distinctus	1951	1898	1951	1918	1918	0
Aphodius equestris	2010	1991	1991	2004	2010	2
Aphodius erraticus	2008	1899	2008	1905	1963	2
Aphodius fasciatus	2010	1909	2010	1955	1956	2
Aphodius fimetarius	2012	1897	2007	1905	2012	4

Species	Cumbria latest year	VC 70 Cumberland		VC 69 Westmorland		Frequency
		first year	last year	first year	last year	
Aphodius foetens	1991	1901	1991	1904	1960	2
Aphodius foetidus (= scybalarius)	2002	1905	2002	1993	1993	2
Aphodius fossor	2009	1897	2009	1905	2009	4
Aphodius granarius	2010	1835	2010	1985	2005	2
Aphodius haemorrhoidalis	2012	1905	1905	1985	2012	2
Aphodius ictericus	2000	1901	2000	1960	1985	2
Aphodius lapponum	2010	1865	2008	1904	2010	5
Aphodius luridus	2007	1899	2002	1955	2007	2
Aphodius merdarius	1991	1897	1991	1905	1960	1
Aphodius nemoralis	2007	1971	1987	1963	2007	2
Aphodius oblitteratus	2009	1905	2009	1964	2007	3
Aphodius paykulli	2009	1902	2009	1960	1964	2
Aphodius plagiatus	2007	1992	2007	1960	2007	3
Aphodius porcus	2008	1901	2008			1
Aphodius prodromus	2009	1897	2010	1960	2010	6
Aphodius pusillus	1989	1900	1989	1971	1985	2
Aphodius rufipes	2009	1897	2010	1905	1999	5
Aphodius rufus	1991	1901	1991	1985	1985	2
Aphodius sordidus	1830	1830	1830			0
Aphodius sphacelatus	2012	1897	2008	1905	2012	5
Aphodius subterraneus	1835	1835	1835			0
Psammodytes asper	1993			1993	1993	1
Onthophagus coenobite	2010			1996	2010	2
Onthophagus joannae	1989			1989	1989	2
Onthophagus nuchicornis	1835	1835	1920?			0
Onthophagus similis	2007	1898	2007	1963	2007	3
Serica brunnea	2008	1897	2008	1905	2007	3
Melolontha hippocastani	1914	1845	1914	1899	1899	0
Melolontha melolontha	2010	1897	2010	1905	1971	4
Hoplia philanthus	2007	1897	2005	1905	2007	3
Phyllopertha horticola	2010	1897	2007	1899	2010	5
Anomala dubia	2007	1898	2007	1960	1986	3
Cetonia aurata	2003			2003	2003	1
Gnorimus nobilis	1835	1835	1835			0
DASCILLIDAE						
Dascillus cervinus	2010	1894	2010	1904	2010	6
CLAMBIDAE						
Calymene dubius	1907	1904	1907			0
Clambus armadillo	1911	1904	1911	1905	1905	0
Clambus evae	1913	1905	1905	1913	1913	0
Clambus nigrellus	1904	1904	1904			0
Clambus nigriclavus	1907	1904	1907			0
Clambus pubescens	1907	1901	1907			0
Clambus punctulus	1909	1909	1909			0
SCIRTIDAE						
Elodes marginata	2010	1894	2010	1865	2010	5
Elodes minuta agg.	2010	1898	2010	1905	2010	3
Elodes pseudominuta	1905	1905	1905			0
Microcara testacea	2003	1898	2003	1971	2003	4
Cyphon coarctatus	2010	1901	2010	1905	2010	5
Cyphon hilaris	2010	1901?	2010	1971	2010	5
Cyphon konsbergensis	2007	2000	2000	1999	2007	2
Cyphon ochraceus	2008	1905	2008	1980	2000	4
Cyphon padi	2010	1901	2009	1971	2010	4
Cyphon palustris	2004	1901	2004	1913	2003	3
Cyphon phragmiteticola	2010	1901?	2010	1905?	2009	3

Species	Cumbria latest year	VC 70 Cumberland		VC 69 Westmorland		Frequency
		first year	last year	first year	last year	
Cyphon pubescens	2006	1902	2004	2001	2006	2
Cyphon punctipennis	2009	1901	2009			2
Cyphon variabilis	2010	1901	2008	1905	2010	4
Prionocyphon serricornis	2000			1998	2000	3
Hydrocyphon deflexicollis	2010	1899	2010	1864	2000	3
Scirtes hemisphaericus	2006	2005	2006			2
BYRRHIDAE						
Simplocaria semistriata	1997	1899	1997	1905	1960	2
Morychus aeneus	2004	1902	2004			2
Cytilus sericeus	2005	1897	2005	1905	1992	4
Byrrhus arietinus	2006	1901	2006	1971	1971	4
Byrrhus fasciatus	1990	1901	1990	1865	1905	1
Byrrhus pilula	2002	1897	2002	1904	2002	4
Byrrhus pustulatus	1999	1901	1999	1960	1988	2
Curimopsis maritima	1993			1960	1993	1
PSEPHENIDAE						
Eubria palustris	1993			1993	1993	1
HETEROCERIDAE						
Heterocerus fenestratus	1902	1902	1902	1960?	1960?	0
Heterocerus flexuosus	2009	1990	2009	1973	1990	3
Heterocerus fossor	1999	1999	1999	1929	1929	2
Heterocerus marginatus	2004	1901	2004			2
Heterocerus maritimus	2006	1900	2006	1993	2006	2
DRYOPIDAE						
Pomatinus substriatus	1990	1960	1990			1
Dryops ernesti	2010	1898	2010	1905	2001	4
Dryops luridus	2012	1899	2004	1960	2012	4
Dryops nitidulus	1971			1971	1971	0
Dryops striatellus	2010	1901	1985	2010	2010	2
ELMIDAE						
Elmis aenea	2011	1900	2011	1865	2001	3
Esolus parallelepipedus	2004	1845	2004	1913	1913	2
Limnius volckmari	2008	1900	2004	1905	2008	3
Normandia nitens	1905	1901	1905			0
Oulimnius troglodytes	2000	1981	2000	1963	1963	2
Oulimnius tuberculatus	2008	1900	2005	1905	2008	4
Riolus cupreus	1995	1845	1995	1967	1977	2
Riolus subviolaceus	2007	1900	2000	1865	2007	2
Stenelmis canaliculata	1978			1960	1978	0
BUPRESTIDAE						
<i>Buprestis aurulenta</i>	1948	1948	1948			0
Trachys troglodytes	1991	1991	1991			1
ELATERIDAE						
Agrypnus murinus	2006	1898	2006	1972	2006	3
Hypnoidus riparius	2010	1894	2010	1905	2010	7
Actenicerus sjaelandicus	2006	1894	2002	1864	2006	3
Ctenicera cuprea	2008	1894	2008	1865	2004	5
Ctenicera pectinicornis	1996	1903	1996	1865	1996	2
Aplotarsus incanus	2010	1898	2010	1865	2010	6
Paraphotistus impressus	2008	1845	2008	2003	2003	2
Prosternon tessellatum	2005	1909	2005	1865	2006	3
Selatosomus aeneus	2004	1980	1993	1910	2004	2
Cidnopus aeruginosus	2008	1897	2008	2002	2007	4
Kibunea minuta	2002	1894	2000	2002	2002	3
Denticollis linearis	2010	1898	2010	1899	2010	5
Athous bicolor	1835	1835	1835			0

Species	Cumbria latest year	VC 70 Cumberland		VC 69 Westmorland		Frequency
		first year	last year	first year	last year	
Athous haemorrhoidalis	2010	1897	2006	1905	2010	6
Athous vittatus	2010	1894	2010	1905	2010	5
Diacanthous undulatus	2003			2003	2003	1
Hemicrepidius hirtus	2008	1894	2008	1904	2002	4
Adrastus pallens	2008	1897	2008	1971	2007	3
Synaptus filiformis	2007			2003	2007	2
Agriotes acuminatus	2010	1845	2008	1971	2010	4
Agriotes lineatus	1999	1898	1999	1987	1987	3
Agriotes obscurus	2010	1897	2010	1905	2007	5
Agriotes pallidulus	2010	1898	2010	1905	2003	6
Agriotes sputator	2006	1897	2006	1993	1993	2
Dalopius marginatus	2010	1897	2010	1905	2010	6
Ampedus balteatus	2005	1897	2005	1913	2002	3
Ampedus nigrinus	2009	1928	2009	1941	2010	3
Ampedus pomorum	2006			1971	2006	1
Sericus brunneus	1989	1894	1989	1913	1971	2
Melanotus castanipes	2008	1897	2008	1910	2010	4
Fleutiauxellus maritimus	2004	1902	2004	2004	2004	3
Negastrius sabulicola	2004	1911	2004	2004	2004	2
Zoroachros minimus	2008	1898	2008	1905	2004	5
Cardiophorus gramineus	1835	1835	1835			0
THROSCIDAE						
Trixagus dermestoides	2007	1901	2002	1913	2007	3
Trixagus carinifrons	2002			2001	2002	2
EUCNEMIDAE						
Microrhagus pygmaeus	1993			1971	1993	2
CANTHARIDAE						
Podabrus alpinus	2010	1898	2009	1899	2010	4
Ancistrionycha abdominalis	1999	1897	1997	1864	1999	2
Cantharis cryptica	2010	1897	2010	1905	2010	5
Cantharis decipiens	2010	1897	2010	1905	2003	6
Cantharis figurata	2010	1899	2010	1899	2010	3
Cantharis fusca	2006	2006	2006			1
Cantharis lateralis	2007	1943	1987	1998	2007	2
Cantharis livida	2004	1897	2004	1905	1985	4
Cantharis nigra	2010	1897	2010	1913	2010	6
Cantharis nigricans	2010	1897	2010	1905	2010	6
Cantharis obscura	2002	1898	2006	1899	2002	4
Cantharis pallida	2010	1990	2008	1971	2010	5
Cantharis paludosa	2008	1900	2002	1904	2008	3
Cantharis pellucida	2010	1898	2009	1971	2010	6
Cantharis rufa	2010	1898	2010	1905	2010	4
Cantharis rufa darwiniana	1907	1898	1907			0
Cantharis rustica	2010	1897	2004	1905	2010	3
Cantharis thoracica	2004	1835	2004	1971	2001	3
Rhagonycha fulva	2010	1897	2010	1971	2010	7
Rhagonycha lignosa	2010	1897	2010	1905	2010	5
Rhagonycha limbata	2010	1899	2010	1905	2010	5
Rhagonycha testacea	2010	1835	2008	1971	2010	4
Rhagonycha translucida	2007	1913	1996	1999	2007	2
Malthinus balteatus	1993			1913	1993	1
Malthinus flaveolus	2007	1898	2006	1905	2007	3
Malthinus frontalis	1960	1900	1960			0
Malthinus seriepunctatus	2001			1905	2001	1
Malthodes dispar	2007	1903	2007	1993	1993	4
Malthodes fibulatus	1905			1905	1905	0

Species	Cumbria latest year	VC 70 Cumberland		VC 69 Westmorland		Frequency
		first year	last year	first year	last year	
Malthodes flavoguttatus	2010	1901	2008	1905	2010	4
Malthodes fuscus	2007	1901	1993	1913	2007	2
Malthodes guttifer	2004	1901	2004	1980	1993	2
Malthodes marginatus	2010	1898	2010	1865	2010	6
Malthodes maurus	2011	2011	2011	1993	1993	2
Malthodes minimus	2008	1905	2008	1903	1998	2
Malthodes mysticus	2007	1901	2006	1971	2007	5
Malthodes pumilus	1993	1902	1993	1905	1918	2
LAMPYRIDAE						
Lampyrus noctiluca	2010	1897	2005	1802	2010	3
DERMESTIDAE						
Dermestes frischii	1953	1953	1953			0
Dermestes maculatus	1910	1910	1910			0
Dermestes murinus	2005	2005	2005	1960	1985	2
Dermestes lardarius	1922	1899	1922	1905	1905	0
Attagenus pellio	1988	1899	1988	1905	1967	2
Ctesias serra	1988	1907	1987	1988	1988	2
Anthrenus museorum	1993	1907	1910	1993	1993	1
Anthrenus fuscus	1989	1989	1989	1983	1983	2
Anthrenus verbasci	2011	1989	2008	2011	2011	2
DERODONTIDAE						
Laricobius erichsoni	2011	1995	2011	1997	1997	3
ANOBIIDAE						
Hedobia imperialis	1915	1905	1915			0
Grynobius planus	2004	1901	2004	1905	1907	4
Dryophilus pusillus	2008	1900	2008	1905	1957	3
Ochina ptinoides	1960	1901	1924	1905	1960	0
Xestobium rufovillosum	1835	1835	1835			0
Ernobius mollis	2005	1899	2005	1905	1905	2
Ernobius nigrinus	1936	1936	1936			0
Stegobium paniceum	1905	1905	1994?			1
Anobium fulvicorne	2012	2012	2012			1
Anobium inexpectatum	1982	1982	1982			0
Anobium punctatum	2009	1901	2009	1905	2002	6
Ptilinus pectinicornis	1999	1999	1999	1991	1991	2
Lasioderma serricorne	2008	2008	2008			1
Caenocara bovistae	1964			1964	1964	0
PTINIDAE						
Gibbium psyllodes	1908	1897	1908			0
Mezium affine	1915	1915	1915			0
Trigonogenius globulus	1915	1901	1915			0
Niptus hololeucus	1998	1897	1998	1905	1960	1
Tipnus unicolor	1905	1901	1905	1905	1905	0
Ptinus sexpunctatus	1835	1835	1835			0
Ptinus fur	1995	1897	1960	1905	1995	1
Ptinus lichenum	1960			1960	1960	0
Ptinus subpilosus	1905	1902	1905			0
Ptinus tectus	2004	1905	2004	1905	1960	1
BOSTRICHIDAE						
Bostrichus capucinus (imported)	1912	1912	1912			0
LYCTIDAE						
Lyctus linearis	1919	1919	1919			0
Lyctus brunneus	2009	2009	2009			1
PHLOIOPHILIDAE						
Phloiophilus edwardsi	2002	1902	2002			2
TROGOSSITIDAE						

Species	Cumbria latest year	VC 70 Cumberland		VC 69 Westmorland		Frequency
		first year	last year	first year	last year	
Tenebroides mauritanicus	1960	1897	1960			0
PELTIDAE						
Thymalus limbatus	2006			1964	2006	3
CLERIDAE						
Tillus elongatus	1835	1835	1835			0
Thanasimus formicarius	1996	1980	1980	1965	1996	1
Necrobia ruficollis	2003	1901	2003			1
Necrobia rufipes	1907	1907	1907			0
Necrobia violacea	2007	1901	2007	1905	1971	3
MELYRIDAE						
Aplocnemus pini	1910	1906	1910			0
Dasytes aeratus	2012	1898	1996	1905	2012	3
Psilothrix viridicoeruleus	1997	1921	1997	1955	1960	1
Malachius bipustulatus	2005	1897	2005	1905	2000	3
Malachius viridis	1835	1835	1835			0
Anthocomus fasciatus	1835	1835	1835			0
LYMEXYLIDAE						
Hylecoetus dermestoides	2004	2001	2001	2003	2004	2
NITIDULIDAE						
Kateretes bipustulatus	2001	1901	1992	1905	2001	2
Kateretes pedicularius	1993	1898	1993	1905	1907	1
Kateretes rufilabris	2010	1898	2010	1991	2010	5
Brachypterus glaber	2012	1898	2010	1905	2012	4
Brachypterus urticae	2012	1901	2010	1905	2012	4
Brachypterolus linariae	2001	2001	2001			1
Brachypterolus pulicarius	1987	1987	1987			1
Carpophilus marginellus	1992	1992	1992			1
Pria dulcamarae	1909	1909	1909			0
Meligethes aeneus	2010	1897	2010	1905	2010	7
Meligethes atratus	2011	1909	1994	1913	2011	3
Meligethes bidens	2002	1909	1994			2
Meligethes brunnicornis	2008	1924	2008	c.1949	c.1949	2
Meligethes difficilis	1999	1972	1999	c.1949	c.1949	1
Meligethes erythropus	2006	1901	2006	1905	1905	2
Meligethes exilis	2002	1901	2002			2
Meligethes flavimanus	2012	1899	2010	1905	2012	4
Meligethes persicus	1993	1993	1993			1
Meligethes lugubris	2009			1955	2009	2
Meligethes morosus	c.1949	c.1949	c.1949	c.1949	c.1949	0
Meligethes nigrescens	2009	1901	2009	1905	2007	3
Meligethes obscurus	2011	1930	1993	1913	2011	2
Meligethes viduatus	2008	1901	2008	1905	1913	2
Meligethes subrugosus	1910	1908	1910			0
Meligethes umbrosus	1907	1907	1907			0
Meligethes viridescens	2004	1901	2004	1905	1960	2
Epuraea terminalis	1910	1910	1910			0
Epuraea aestiva	2010	1897	2010	1905	2010	6
Epuraea angustula	1971			1971	1971	0
Epuraea deleta	2009	1903	2009	1865	2009	4
Epuraea florea	1905	1901	1903	1905	1905	0
Epuraea limbata	2003	1845	2003			1
Epuraea melanocephala	2010	1935	2010	1971	2010	6
Epuraea melina	2008	1903	2008	1905	2008	4
Epuraea pusilla	2003	1901	1932	1971	2003	1
Epuraea rufomarginata	2001	1901	1994	2001	2001	2
Epuraea biguttata	2009	1898	2009	2007	2007	3

Species	Cumbria latest year	VC 70 Cumberland		VC 69 Westmorland		Frequency
		first year	last year	first year	last year	
<i>Nitidula bipunctata</i>	2011	1898	2011	1905	1971	2
<i>Omosita colon</i>	2007	1898	2007	1963	1993	2
<i>Omosita depressa</i>	2011	1899	2011	1905	2000	3
<i>Omosita discoidea</i>	2011	1898	2011	1960	1971	1
<i>Soronia grisea</i>	1918	1899	1918	1905	1905	0
<i>Soronia punctatissima</i>	2006	2003	2006	1962	1970	2
<i>Pocadius ferrugineus</i>	2007	1901	2007			3
<i>Thalycra ferrida</i>	1918	1918	1918			0
<i>Cychramus luteus</i>	2010	1898	2010	1964	2010	2
<i>Pityophagus ferrugineus</i>	1988	1901	1988			1
<i>Glischrochilus hortensis</i>	1920	1899	1920			0
<i>Glischrochilus quadriguttatus</i>	2000	1845	1994	1968	2000	2
<i>Glischrochilus quadripunctatus</i>	2010	1921	2010	2003	2003	2
RHIZOPHAGIDAE						
<i>Rhizophagus bipustulatus</i>	2010	1897	2010	1905	2006	4
<i>Rhizophagus cribratus</i>	1913	1898	1913	1905	1905	0
<i>Rhizophagus depressus</i>	2012	1900	1976	1971	2012	1
<i>Rhizophagus dispar</i>	2010	1899	2010	1971	2010	6
<i>Rhizophagus ferrugineus</i>	2008	1901	2008	1945	1993	3
<i>Rhizophagus nitidulus</i>	2010	1996	2010	1971	2010	4
<i>Rhizophagus parallelocollis</i>	1990	1901	1990			1
<i>Rhizophagus perforatus</i>	2009	1992	2009			2
<i>Rhizophagus picipes</i>	1971			1971	1971	0
<i>Cyanostolus aeneus</i>	1991	1991	1991			1
<i>Monotoma angusticollis</i>	1906	1906	1906	pre 1977	pre 1977	0
<i>Monotoma bicolor</i>	2009	1914	2009			3
<i>Monotoma conicicollis</i>	1992	1906	1992	1979	1979	1
<i>Monotoma longicollis</i>	1992	1906	1992			1
<i>Monotoma picipes</i>	2008	1901	2008	1905	1905	3
SPHINDIDAE						
<i>Aspidiphorus orbiculatus</i>	2003	1903	2003			1
CUCUJIDAE						
<i>Uleiota planata</i>	1906	1906	1906			0
<i>Cryptolestes ferrugineus</i>	2009	1905	2009			1
<i>Cryptolestes pusillus</i>	1908	1905	1908	1905	1905	0
SILVANIDAE						
<i>Ahasverus advena</i>	2009	1913	2009			1
<i>Oryzaephilus surinamensis</i>	1960	1900	1908	1905	1960	0
CRYPTOPHAGIDAE						
<i>Telmatophilus caricis</i>	2010	1907	2010	1960	1993	4
<i>Telmatophilus typhae</i>	2006	1997	2006	1971	2002	3
<i>Paramecosoma melanocephalum</i>	2008	1897	2005	1905	2008	2
<i>Henoticus serratus</i>	1927	1835	1927			0
<i>Cryptophagus acuminatus</i>	1901	1901	1901			0
<i>Cryptophagus acutangulus</i>	2008	1907	2008			1
<i>Cryptophagus angustus</i>	1905	1905	1905			0
<i>Cryptophagus cellaris</i>	1960	1905	1926	1905	1960	0
<i>Cryptophagus dentatus</i>	2008	1915	2008	1905	2008	3
<i>Cryptophagus distinguendus</i>	2008	1905	2008	1905	1905	1
<i>Cryptophagus laticollis</i>	2002	1901	2002	1905	1905	2
<i>Cryptophagus lycoperdi</i>	2011	1903	2011	1964	1971	2
<i>Cryptophagus pallidus</i>	1991	1905	1991			1
<i>Cryptophagus pilosus</i>	2009	1906	2009	1905	1999	3
<i>Cryptophagus postpositus</i>	2008	1905	2008			1
<i>Cryptophagus pseudodentatus</i>	1994	1898	1994	1900	1907	2
<i>Cryptophagus pubescens</i>	1993	1907	1993	1960	1960	1

Species	Cumbria latest year	VC 70 Cumberland		VC 69 Westmorland		Frequency
		first year	last year	first year	last year	
Cryptophagus ruficornis	1958	1958	1958			0
Cryptophagus saginatus	2009	1898	2009			2
Cryptophagus scanicus	2010	1898	2010	1905	1905	1
Cryptophagus scutellatus	2008	1906	2008			2
Cryptophagus setulosus	2009	1898	2009	1907	1907	1
Cryptophagus subdepressus	1947	1900	1947			0
Micrambe villosus	2006	1901	2006			2
Micrambe vini	2012	1897	2010	1905	2012	5
Antherophagus nigricornis	2006	1899	2005	1995	2006	4
Antherophagus pallens	1998	1898	1998	1905	1986	3
Caenoscelis ferruginea	1927	1924	1927			0
Atomaria apicalis	2011	1901	2007	1905	2011	3
Atomaria atra	2009	1907	1992	2009	2009	2
Atomaria atricapilla	2010	1903	2009	1905	2010	4
Atomaria rubella	2010	1901	2010	1987	1987	2
Atomaria clavigera	1924	1924	1924			0
Atomaria fuscata	2010	1899	2008	1905	2010	5
Atomaria fuscipes	1943	1905	1943	1905	1907	0
Atomaria lewisi	2010	1991	2008	1960	2010	3
Atomaria mesomela	2010	1905	1998	1905	2010	2
Atomaria munda	1985	1906	1980	1985	1985	1
Atomaria nigripennis	1906	1906	1906			0
Atomaria nitidula	1993	1899	1993	1905	1907	2
Atomaria pusilla	1997	1899	1997	1905	1905	1
Atomaria rubida	1971	1901	1915	1971	1971	0
Atomaria testacea	2010	1901	2010	1987?	2010	5
Atomaria turgida	1996			1996	1996	1
Atomaria diluta	1907	1905	1907			0
Atomaria fimetarii	1908	1908	1908			0
Atomaria impressa	1845	1845	1845			0
Atomaria nigrirostris	2010	1906	2010	1905	1971	1
Atomaria pulchra	1943	1906	1943			0
Atomaria punctithorax	1908	1908	1908			0
Atomaria strandi	1904	1904	1904			0
Ootypus globosus	1925	1845	1925			0
Ephistemus globulus	2010	1899	2010	1905	1986	3
BYTURIDAE						
Byturus ochraceus	2012			2012	2012	1
Byturus tomentosus	2010	1897	2010	1905	2004	6
EROTYLIDAE						
Triplax aenea	2013	1942	2013	1960	2003	2
Tritoma bipustulata	2002			1956	2002	2
Dacne bipustulata	1954	1954	1954			0
Dacne rufifrons	2007	2006	2007			1
BIPHYLLIDAE						
Biphyllus lunatus	2007			2007	2007	1
PHALACRIDAE						
Olibrus aeneus	2002	1907	2002			2
Olibrus affinis	2006	2006	2006			2
Olibrus liquidus	2010	2006	2006	2010	2010	2
CERYLONIDAE						
Cerylon fagi	2002			1989	2002	2
Cerylon ferrugineum	2008	1918	2008	1971	2008	4
Cerylon histeroideis	2009	1897	2007	1905	2009	4
CORYLOPHIDAE						
Orthoperus atomus	1910	1907	1910			0

Species	Cumbria latest year	VC 70 Cumberland		VC 69 Westmorland		Frequency
		first year	last year	first year	last year	
Sericoderus lateralis	2008	2008	2008			2
COCCINELLIDAE						
Subcoccinella 24-punctata	2010	1902	2010	1963	1963	7
Coccidula rufa	2010	1897	2010	1905	2009	6
Rhyzobius litura	2008	1897	2008	1985	1985	5
Scymnus frontalis	1960	1901	1901	1960	1960	0
Scymnus interruptus	2009	2009	2009			1
Scymnus nigrinus	2004	1899	1991	1971	2004	2
Scymnus schmidtii	2007	1901	2007	1995	1995	2
Scymnus auritus	1835	1835	1835			0
Scymnus haemorrhoidalis	2000	1904	2000	1973?	1973?	1
Scymnus limbatus	1981			1981	1981	0
Scymnus suturalis	2006	1914	2006	1905	1971	3
<i>Nephus quadrimaculatus</i>	2002	2001	2002	2001	2001	2
Nephus redtenbacheri	2010	1915?	2010	2008	2008	2
Hyperaspis pseudopustulata	2007	1904	2007	1905	2007	3
Chilocorus bipustulatus	2007	1897	2004	1964	2007	3
Chilocorus renipustulatus	2010	1901	2006	1991	2010	4
Exochomus quadripustulatus	2007	1835	2007	1971	2006	4
Hippodamia tredecimpunctata	1835	1835	1835			0
Hippodamia variegata	1989	1921	1989	1960	1970	1
Anisosticta novemdecimpunctata	2010	1932	2005	?	2010	3
Aphidecta oblitterata	2009	1899	2009	1905	2002	7
Tytthaspis sedecimpunctata	2005	1835	1835	1986	2005	3
Adalia bipunctata	2010	1897	2010	1971	2000	5
Adalia decempunctata	2010	1897	2009	1905	2010	7
Coccinella magnifica	1990			1990	1990	1
Coccinella hieroglyphica	2008	1897	2008	1905	1991	4
Coccinella quinquepunctata	1922	1835	1922			0
Coccinella septempunctata	2010	1897	2010	1905	2010	7
Coccinella undecimpunctata	2010	1897	2005	1960	2010	5
Harmonia oxyridis	2012	2012	2012	2012	2012	2
Anatis ocellata	2005	1897	2005	1944	1980	4
Myrrha octodecimguttata	2005	1897	2005	1905	1981	3
Calvia quattuordecimguttata	2010	1897	2010	1971	2010	6
Propylea quattuordecimpunctata	2010	1835	2010	1964	2010	5
Myzia oblongoguttata	2010	1897	2005	1905	2010	4
Halyzia sedecimguttata	2008	1845	2008	1990	2007	5
Psyllobora vigintiduopunctata	2010	1897	2008	c.1980	2010	5
ENDOMYCHIDAE						
Sphaerosoma piliferum	2012	1906	1907	2012	2012	1
Mycetaea hirta	2010	1906	2010	1905	1905	3
Endomychus coccineus	2007	1830	1989	2007	2007	2
LATHRIDIIDAE						
Lithostygnus serripennis	1995	1995	1995			1
Stephostethus lardarius	2006	1899	2006	1905	2004	3
Aridius bifasciatus	2008	1990	2008			5
Aridius nodifer	2009	1901	2009	1905	2002	6
Lathridius anthracinus	1999	1999	1999			1
Lathridius pseudominutus	2009	1901	2009	1905	1913	2
Thes bergrothi	1907	1907	1907			0
Enicmus brevicornis	1906	1905	1906			0
Enicmus fungicola	1993	1901	1906	1993	1993	1
Enicmus histrio	2010	1910	1997	1905	2010	2
Enicmus rugosus	2005	2005	2005			1
Enicmus testaceus	1917	1905	1917			0

Species	Cumbria latest year	VC 70 Cumberland		VC 69 Westmorland		Frequency
		first year	last year	first year	last year	
<i>Enicmus transversus</i>	1993	1901	1993	1905	1907	2
<i>Dienerella elongata</i>	1960			1960	1960	0
<i>Dienerella filiformis</i>	1906	1906	1906			0
<i>Dienerella ruficollis</i>	1920	1906	1920			0
<i>Corticaria crenulata</i>	1995	1909	1995	1986	1986	2
<i>Corticaria elongata</i>	2010	1901	2010	1905	1960	2
<i>Corticaria ferruginea</i>	1925	1906	1925			0
<i>Corticaria fulva</i>	1910	1910	1910			0
<i>Corticaria impressa</i>	2004	1903	2004	1905	1960	1
<i>Corticaria punctulata</i>	1909	1898	1909			0
<i>Corticaria serrata</i>	1922	1922	1922			0
<i>Corticarina fuscula</i>	2010	1899	2010	1986	2010	3
<i>Corticaria gibbosa</i>	2010	1901	2010	1905	1986	5
CISIDAE						
<i>Octotemnus glabriculus</i>	2010	1899	2010	1905	2009	5
<i>Sulcacis affinis</i>	1991	1991	1991			1
<i>Cis alni</i>	2006	1901	2006			1
<i>Cis festivus</i>	1989	1845?	1989			1
<i>Cis pygmaeus</i>	1991	1991	1991			1
<i>Cis bidentatus</i>	2008	1903	2008	1992	2008	4
<i>Cis bilamellatus</i>	2008	1990	2008	1999	2002	3
<i>Cis boleti</i>	2010	1897	2010	1905	2009	5
<i>Cis hispidus</i>	2012	1907	2012			1
<i>Cis lineatocribratus</i>	1907	1907	1907			0
<i>Cis micans</i>	1907	1907	1907			0
<i>Cis nitidus</i>	2009	1899	2009	1905	2006	3
<i>Cis punctulatus</i>	1907	1907	1907			0
<i>Cis vestitus</i>	2009	2009	2009			1
<i>Cis villosulus</i>	2011			2011	2011	1
<i>Ennearthron cornutum</i>	2012	1993	2012	2006	2006	2
MYCETOPHAGIDAE						
<i>Pseudotriphyllus suturalis</i>	2000	1900	1926	1905	2000	1
<i>Litargus connexus</i>	2003			1971	2003	1
<i>Mycetophagus multipunctatus</i>	1903	1901	1903			0
<i>Mycetophagus atomarius</i>	2005	1905	2005	1988	2002	2
<i>Mycetophagus piceus</i>	2008	2008	2008			1
<i>Mycetophagus quadripustulatus</i>	1999	1900	1999	1905	1905	1
<i>Typhaea stercorea</i>	2010	1899	2010	1905	1991	3
COLYDIIDAE						
<i>Orthocerus clavicornis</i>	2003	1985	2003			2
<i>Synchita humeralis</i>	1971			1971	1971	0
TENEBRIONIDAE						
<i>Blaps lethifera</i>	1900	1900	1900			0
<i>Blaps mucronata</i>	2005	1901	2005	1905	1907	1
<i>Phylan gibbus</i>	2007	1897	2007	1960	2007	4
<i>Melanimon tibialis</i>	2005	1899	2005	1960	1992	3
<i>Opatrum sabulosum</i>	2010	1992	2010			2
<i>Phaleria cadaverina</i>	2007	1909	2006	2007	2007	3
<i>Diaperis boleti</i>	1907	1835	1907			0
<i>Gnatocerus cornutus</i>	1953	1905	1953	1905	1905	0
<i>Tribolium castaneum</i>	1908	1899	1908	1905	1905	0
<i>Tribolium confusum</i>	1953	1903	1953	1905	1905	0
<i>Latheticus oryzae</i>	1905	1905	1905	1905	1905	0
<i>Palorus ratzeburgi</i>	1960	1960	1960			0
<i>Palorus subdepressus</i>	1953	1953	1953			0
<i>Alphitobius diaperinus</i>	1917	1909	1917			0

Species	Cumbria latest year	VC 70 Cumberland		VC 69 Westmorland		Frequency
		first year	last year	first year	last year	
<i>Tenebrio molitor</i>	1897	1897	2006?			1
<i>Tenebrio obscurus</i>	1942	1901	1942			0
<i>Helops caeruleus</i>	1835	1835	1835			0
<i>Cylindrinotus laevioctostriatus</i>	2001	1898	2001			1
<i>Cylindrinotus pallidus</i>	2007	2004	2007			2
<i>Lagria hirta</i>	2012	1901	2012	2007	2007	3
<i>Gonodera luperus</i>	2012			1954	2012	1
TETRATOMIDAE						
<i>Isomira murina</i>	2012	1904	2007	1905	2012	3
<i>Cteniopus sulphureus</i>	1989			c.1870	1989	1
<i>Tetratoma ancora</i>	1908	1902	1908			0
<i>Tetratoma desmaresti</i>	1907	1907	1907			0
<i>Tetratoma fungorum</i>	2003	1903	2003			2
SALPINGIDAE						
<i>Rabocerus gabrieli</i>	2005	1902	2005	1988	1993	2
<i>Salpingus castaneus</i>	2003	1901	2003	1905	1993	2
<i>Salpingus ater</i>	1960	1906	1960	1905	1906	0
<i>Vincenzellus ruficollis</i>	2009	1899	2009	1905	1991	2
<i>Rhinosimus planirostris</i>	2010	1897	2010	1905	1993	5
<i>Rhinosimus ruficollis</i>	1992	1899	1992	1905	1964	1
PYROCHROIDAE						
<i>Pyrochroa coccinea</i>	2009	1993	1993	1958	2009	3
<i>Pyrochroa serraticornis</i>	2010	1896	2010	1971	2007	6
MELANDRYIDAE						
<i>Hallomenus binotatus</i>	1986	1986	1986			1
<i>Orchesia micans</i>	2007	1906	2007			2
<i>Orchesia minor</i>	2000	1845	1998	1988	2000	3
<i>Orchesia undulata</i>	2009	1903	2007	1971	2009	4
<i>Abdera flexuosa</i>	1998	1905	1998	1991	1996	3
<i>Melandrya caraboides</i>	2002	1897	1996	1899	2002	3
<i>Conopalpus testaceus</i>	1835	1835	1835			0
SCRAPTIIDAE						
<i>Scraptia testacea</i>	1907	1907	1907			0
<i>Anaspis frontalis</i>	2010	1897	2010	1905	2010	5
<i>Anaspis garneysi</i>	2012	1905	2012	1905	2007	3
<i>Anaspis humeralis</i>	2010	1901	1999	1905	2010	3
<i>Anaspis lurida</i>	2002	1903	1903	2002	2002	1
<i>Anaspis maculata</i>	2010	1897	2010	1905	2010	7
<i>Anaspis regimbarti</i>	2010	1897	2010	1905	2010	5
<i>Anaspis rufilabris</i>	2010	1901	2010	1905	2010	6
<i>Anaspis thoracica</i>	1924	1905	1924			0
RHIPIPHORIDAE						
<i>Metoecus paradoxus</i>	1999	1901	1999	1995	1995	2
OEDEMERIDAE						
<i>Nacerdes melanura</i>	2011	1901	2001	1986	2011	2
<i>Ischnomera cinarens</i>	2011			2011	2011	1
<i>Oncomera femorata</i>	2001			1924	2001	1
<i>Oedemera lurida</i>	2010	1907	2010	1913	2010	5
<i>Oedemera nobilis</i>	2005	1899?	2005			2
MELOIDAE						
<i>Meloe proscarabaeus</i>	2010	1898	2010	1905	1998	2
<i>Meloe violaceus</i>	2003	1925	2003	1899	1998	3
ANTHICIDAE						
<i>Notoxus monoceros</i>	2010	1909	2005	1992	2010	3
<i>Anthicus bimaculatus</i>	1995			1995	1995	1
<i>Anthicus constrictus</i>	2001	1909	2001			1

Species	Cumbria latest year	VC 70 Cumberland		VC 69 Westmorland		Frequency
		first year	last year	first year	last year	
Anthicus floralis	2008	1898	2008	1905	1910	3
Anthicus formicarius	2009	1901	2009			3
Anthicus scoticus	2005	1897	2005			2
CERAMBYCIDAE						
Aseum striatum	2006	1896	2006	1957	2002	3
Tetropium castaneum	2010	2008	2009			2
Tetropium gabrieli	2009	1934	2009	1947	1947	1
Rhagium bifasciatum	2010	1896	2010	1904	2003	5
Rhagium mordax	2011	1897	2009	1958	2011	5
Stenocorus meridianus	1918	1901	1907	1898	1918	0
Grammoptera ruficornis	2010	1898	2010	1904	2002	5
Alosterna tabacicolor	2008	1903	2008	1905	1905	3
Pachytodes cerambyciformis	2004	1835	2004			2
Rutpela maculata	2010	1835	2010	1958	2002	5
Strangalia melanura	2011	1897	1998	1978	2011	2
Strangalia quadrifasciata	2009	1835	2002	1945	2009	3
<i>Cerambyx cerdo (imported)</i>	1940	1920	1940			0
Gracilia minuta	1925	1925	1925			0
Molorchus umbellatarum	1958			1958	1958	0
Aromia moschata	1906	1898	1906	2009?	2009?	1
Callidium violaceum	1916	1899	1916			0
Phymatodes alni	1835	1835	1835			0
Phymatodes testaceus	1958	1958	1958			0
Clytus arietis	2006	1896	2005	1905	2006	4
Plagionotus arcuatus	1911	1835	1911			0
<i>Monochamus sartor (imported)</i>	1935	1934	1935			0
<i>Monochamus sutor (imported)</i>	1934	1934	1934			0
Pogonocherus hispidulus	2009	1901	2009	1905	2007	3
Pogonocherus hispidus	1993	1835	1930	1945	1993	2
Leiopus nebulosus	2007	1896	1960	1904	2007	3
Acanthocinus aedilis	1906	1905	1906			0
Saperda populnea	1959	1899	1959	pre1948?	pre1948?	0
Saperda scalaris	2005	1835	2005			1
Stenostola dubia	1993	1903	1976	1993	1993	1
Tetrops praeusta	1993	1901	1991	1905	1993	2
BRUCHIDAE						
Bruchus loti	2005	1993	1998	1993	2005	2
Bruchus pisorum	1917	1910	1917			0
Bruchus rufimanus	1905	1835	1905			0
Bruchidius cisti	2011			c.1975	2011	1
Bruchidius villosus	2004	2004	2004			2
Acanthoscelides obtectus	1914	1914	1914			0
Callosobruchus chinensis	1905			1905	1905	0
ORSODACNIDAE						
Orsodacne cerasi	2008			2007	2008	2
CHRYSOMELIDAE						
Macrolea appendiculata	1994	1911	1994			2
Donacia aquatica	2005	1898	1991	1864	2005	2
Donacia cinerea	1904			1904	1904	0
Donacia clavipes	1993			1905	1993	1
Donacia crassipes	1835	1835	1835	1880?	1880?	0
Donacia dentata	1835	1835	1835			0
Donacia impressa	2005	1905	2005	1963	2004	2
Donacia obscura	2005	1902	1905	1987	2005	2
Donacia semicuprea	2007			2007	2007	1
Donacia simplex	2010	1897	2010	1905	2001	3

Species	Cumbria latest year	VC 70 Cumberland		VC 69 Westmorland		Frequency
		first year	last year	first year	last year	
Donacia thalassina	2004	1993	1995	1904	2004	3
Donacia versicolore	2012	1900	2005	1991	2012	3
Donacia vulgaris	2005	1981	2005	1993	1993	2
Plateumaris affinis	2000	1900	1991	1864	2000	2
Plateumaris discolor	2010	1894	2010	1904	2005	5
Plateumaris sericea	2005	1898	2003	1904	2005	3
Zeugophora subspinos	1993	1898	1993			1
Zeugophora flavicollis	c.1860			c1860	c.1860	0
Lema cyanella (puncticollis)	2010	2004	2010	1971	1971	2
Oulema lichenis	2010	1897	2010	1905	2010	7
Oulema melanopa agg.	2010	1901	2010	1960	2010	5
Oulema rufocyanea	1978	1898	1978			0
Crioceris asparagi	1835	1835	1835			0
Lilioceris lili	1940	1940	1940			0
Clytra quadripunctata	2007	1897	2003	1975	2007	2
Cryptocephalus aureolus	2003	1909	1979	1946	2003	2
Cryptocephalus bipunctatus	2007			1941	2007	2
Cryptocephalus fulvus	1985	1835	1985			1
Cryptocephalus hypochaeridis	1975			1975	1975	0
Cryptocephalus labiatus	2011	1901	2010	1865	2011	5
Cryptocephalus moraei	2007	1979	1996	1865	2007	2
Cryptocephalus parvulus	2012	1978	1978	1964	2012	1
Cryptocephalus pusillus	2009	1908	2004	1971	2009	3
Lamprosoma concolor	1971	1935	1935	1971	1971	0
Timarcha tenebricosa	2010	1908	2010	1918	1918	2
Chrysolina banksi	2008	1989	2008			3
Chrysolina americana	2012	2008	2008	2011	2012	2
Chrysolina brunsvicensis	2007	1964	2007	1946	1988	4
Chrysolina fastuosa	2008	1835	2008	1921	2001	4
Chrysolina graminis	1835	1835	1835			0
Chrysolina hyperici	2008	1901	2008	1905	1905	2
Chrysolina marginata	1966	1835	1960	1964	1966	0
Chrysolina menthastri	1987	1835	1987			1
Chrysolina orichalcia	1835	1835	1835			0
Chrysolina polita	2007	1897	2006	1905	2007	5
Chrysolina staphylaea	2010	1897	2010	1905	2007	4
Chrysolina varians	2012	1901	2012	1905	2009	3
Gastrophysa polygoni	1999	1897	1999	1905	1992	2
Gastrophysa viridula	2010	1901	2010	1905	2009	7
Phaedon armoraciae	2010	1901	2010	1905	1991	4
Phaedon cochleariae	2010	1901	2010	1905	2000	5
Phaedon concinnus	2011	1901	1999	1960	2011	3
Phaedon tumidulus	2010	1897	2010	1905	2009	6
Hydrothassa glabra	2010	1897	2010	1865	1960	5
Hydrothassa hannoveriana	1960	1900	1960			0
Hydrothassa marginella	2010	1897	2009	1905	2010	6
Prasocuris junci	2004	1898	2004	1905	1960	2
Prasocuris phellandrii	2004	1897	2004	1905	1996	4
Chrysomela aenea	2006	1897	2006	1991	2006	5
Chrysomela populi	2005	1835	2005			2
Phytodecta decemnotata	1835	1835	1835			0
Gonioctena olivacea	2008	1897	2008			2
Gonioctena pallida	2007	1894	1998	1905	2007	2
Phyllodecta laticollis	2008	1990	2008	1960	1995	3
Phratora vitellinae	2012	1897	2004	1905	2012	4
Phratora vulgatissima	2010	1897	2009	1905	2010	5

Species	Cumbria latest year	VC 70 Cumberland		VC 69 Westmorland		Frequency
		first year	last year	first year	last year	
<i>Galerucella calvariensis</i>	2007	1899	2007	1991	2007	5
<i>Galerucella lineola</i>	2010	1897	2010	1905	2006	5
<i>Galerucella nymphaeae</i>	2001	1901	1901	2001	2001	1
<i>Galerucella pusilla</i>	1900+	1900+	1900+			0
<i>Galerucella sagittariae</i>	2008	1901	2008	1905	2007	4
<i>Galerucella tenella</i>	2008	1898	2008	1905	2002	5
<i>Pyrrhalta viburni</i>	2009	1908	1996	1981	2009	2
<i>Galeruca tanacetii</i>	2008	1901	2008	1913	1960	2
<i>Lochmaea caprea</i>	2009	1899	2008	1971	2009	4
<i>Lochmaea crataegi</i>	2002	1902	2002	1971	2002	4
<i>Lochmaea suturalis</i>	2010	1897	2010	1905	2007	5
<i>Phyllobrotica quadrimaculata</i>	2008	1963	2008	1920	2002	4
<i>Luperus flavipes</i>	2007	1894	2004	1905	2007	2
<i>Luperus longicornis</i>	2010	1894	2008	1913	2010	5
<i>Sermylassa halensis</i>	2010	1898	2006	1905	2010	3
<i>Phyllotreta exclamatoris</i>	2006	1901	2006			2
<i>Phyllotreta flexuosa</i>	2009	1902	2008	1971	2009	3
<i>Phyllotreta nemorum</i>	2007	1897	2007	1905	1905	1
<i>Phyllotreta tetrastigma</i>	2008	1905	2008	1993	1993	4
<i>Phyllotreta undulata</i>	2004	1897	2004	1905	2002	4
<i>Phyllotreta striolata</i>	1912	1911	1912	1913	1934	0
<i>Phyllotreta vittula</i>	1998	1914	1998			0
<i>Aphthona atrocaerulea</i>	1995	1995	1995			1
<i>Aphthona euphorbiae</i>	2008	1994	2008	2001	2001	2
<i>Aphthona herbigrada</i>	2011			1971	2011	2
<i>Aphthona melancholica</i>	2007	1990	1992	2007	2007	2
<i>Aphthona nigricipes</i>	1925	1925	1925			0
<i>Aphthona nonstriata</i>	2010	1901	2008	1905	2010	5
<i>Longitarsus anchusae</i>	1920	1903	1920			0
<i>Longitarsus atricollis</i>	2007	1899	2007	1905	1907	2
<i>Longitarsus brunneus</i>	1910	1910	1910			0
<i>Longitarsus exoletus</i>	1908	1908	1908			0
<i>Longitarsus ganglbaueri</i>	1905	1905	1990?			1
<i>Longitarsus gracilis</i>	2009	1901	2004	1905	2009	3
<i>Longitarsus holsaticus</i>	1914	1905	1914			0
<i>Longitarsus jacobaeae</i>	2010	1898	1998	1905	2010	3
<i>Longitarsus kutscherae</i>	2012			1979	2012	1
<i>Longitarsus luridus</i>	2010	1897	2008	1905	2010	6
<i>Longitarsus melanocephalus</i>	2012	1901	2008	1905	2012	4
<i>Longitarsus membranaceus</i>	2011	1981	2008	2001	2011	3
<i>Longitarsus nigrofasciatus</i>	1960	1908	1960			0
<i>Longitarsus ochroleucus</i>	1989	1901	1989	1880?	1880?	1
<i>Longitarsus parvulus</i>	2001	1845	1845	2001	2001	1
<i>Longitarsus plantagomaritimus</i>	2011	1979	1987	1980	2011	2
<i>Longitarsus pratensis</i>	2010	1901	2010	1905	2009	4
<i>Longitarsus reichei</i>	2005	1905	2005	1989	1989	2
<i>Longitarsus rubiginosus</i>	2007	1981	2007	1986	1986	3
<i>Longitarsus succineus</i>	2008	1901	2008	1993	2004	3
<i>Longitarsus suturellus</i>	2009	1901	2008	1905	2009	4
<i>Altica longicollis</i>	2007	1901	2002	1971	2007	3
<i>Altica lythri</i>	2010	2000	2004	2004	2010	2
<i>Altica oleracea</i>	2008	1898	2008	1913	2003	4
<i>Altica palustris</i>	2010	1987	2008	1993	2010	3
<i>Altica pusilla</i>	2009			1905	2009	2
<i>Hermaphysa mercurialis</i>	1993			1993	1993	1
<i>Batophila rubi</i>	2010	1910	2010	1913	2010	2

Species	Cumbria latest year	VC 70 Cumberland		VC 69 Westmorland		Frequency
		first year	last year	first year	last year	
Ochrosis ventralis	1835	1835	1835			0
Crepidodera ferruginea	2010	1897	2008	1913	2010	5
Crepidodera impressa	2011			1993	2011	2
Crepidodera transversa	2010	1898	2005	1905	2010	5
Derocrepis rufipes	2008	1899	2008	1905	2008	3
Hippuriphila modeeri	2004	1910	2004	1905	2003	3
Chalcoides aurata	2006	1897	2006	1905	1905	2
Chalcoides aurea	1986	1835	1835	1986	1986	1
Chalcoides fulvicornis	2010	1901	2010	1905	2002	6
Epitrix pubescens	2007			2007	2007	1
Podagrica fuscicornis	1835	1835	1835			0
Mantura obtusata	2005	1897	2005	1905	2001	3
Mantura rustica	2005	1898	2005	1905	1905	1
Chaetocnema concinna	2004	1897	2004	1905	2004	4
Chaetocnema confusa	1991	1925?	1991			1
Chaetocnema hortensis	2004	1910	2004	1993	1993	3
Chaetocnema sahlbergi	1994	1910	1994	1987	1993	2
Sphaeroderma rubidum	2011	1901	2008	1905	2011	4
Sphaeroderma testaceum	2008	1897	2008	1905	2001	4
Apteropeda globosa	1995	1903	1995	1905	1993	2
Apteropeda orbiculata	2008	1898	2008	1905	1991	3
Mniophila muscorum	1917	1905	1917	1905	1907	0
Psylliodes affinis	2004	1901	2004	1905	1993	3
Psylliodes chrysocephala	2007	1897	2005	2007	2007	3
Psylliodes cuprea	2010	1901	1996	1905	2010	2
Psylliodes marcida	2005	1899	2005	1988	1988	4
Psylliodes napi	2010	1898	2010	1905	2010	5
Psylliodes picina	2005	1907	2005	1971	1971	4
Psylliodes laticollis	2000	1987	2000			3
Cassida flaveola	2008	1901	2008	1998	2001	4
Cassida hemisphaerica	1919	1899	1919			0
Cassida nobilis	2006	1997	2006	2004	2004	2
Cassida prasina	2004	1906	2004	1905	1977	4
Cassida rubiginosa	2009	1897	2009	1955	2009	6
Cassida vibex	1980+	1980+	1980+			1
Cassida viridis	2004	1835	2004	1905	2002	4
Cassida vittata	1995	1995	1995	1983	1983	1
NEMONYCHIDAE						
Cimberis attelaboides	1987	1898	1987	1971	1971	1
ANTHRIBIDAE						
Anthribus nebulosus	1991	1898	1991	1905	1973	1
Choragus sheppardi	2000	2000	2000			1
Araecerus fasciculatus	1908	1908	1908			0
ATTELABIDAE						
Attelabus nitens	1991	1898	1991			1
Apoderus coryli	2002	1835	1835	1946	2002	2
Rhynchites cupreus	1994	1900	1994	1948	1993	2
Rhynchites aeneovirens	1998	1897	1998	1960	1971	2
Rhynchites aequatus	2002	1997	2002			2
Rhynchites germanicus	2000	1899	2000	1905	1913	3
Rhynchites pauxillus	2008	1978	2008			1
Rhynchites longiceps	1989	1897	1989	1971	1971	2
Rhynchites nanus	1993	1901	1989	1971	1993	2
Rhynchites tomentosus	1941	1941	1941			0
Byctiscus betulae	1971	1835	1835	1905	1971	0
Deporaus betulae	2010	1897	2010	1905	2003	4

Species	Cumbria latest year	VC 70 Cumberland		VC 69 Westmorland		Frequency
		first year	last year	first year	last year	
Deporaus mannerheimi	2005	1897	2005	1905	1995	3
APIONIDAE						
Omphalapion hookerorum	1998	1996	1998			2
Ceratapion onopordi	2010	1901	2010	1864	2009	3
Ceratapion gibbirostre	2008	1899	2008	1905	2007	5
Diplapion stolidum	1897	1897	1897			0
Diplapion confluens	2008	1905	2008	1986	1986	4
Aspidapion radiolus	1999	1901	1999			1
Aspidapion aeneum	1835	1835	1835			0
Kalcapion pallipes	2012	1901	1998	1905	2012	2
Pseudapion rufirostre	1960			1960	1960	0
Exapion genistae	1924	1914	1924			0
Exapion ulicis	2008	1897	2008	1905	2004	5
Protapion apricans	2010	1897	2009	1905	2010	5
Protapion assimile	2008	1899	2008	1905	1907	4
Protapion fulvipes	2010	1897	2010	1905	1913	6
Protapion nigrifemur	2003	1897	2003	1905	1960	3
Protapion ononicola	2011	1998	2006	2011	2011	2
Protapion trifolii	2008	1909	2008			2
Perapion curtirostre	2010	1898	2010	1905	2010	7
Perapion marchicum	2004	1901	2004	1904	1913	3
Perapion affine	2005	1897	2005			3
Perapion hydrolapathi	2010	1905	2009	1960	2010	3
Perapion violaceum	2008	1897	2008	1905	2003	5
Apion cruentatum	2004	1930	2004	1998	1998	3
Apion miniatum (= frumentarium)	2005	1901	2005			2
Apion haematodes	2006	1897	2006	1904	2001	4
Apion rubens	2010	1983	2010			2
Apion rubiginosum (sanguineum)	pre1970			pre 1970	pre 1970	0
Catapion pubescens	1983			1983	1983	0
Catapion seniculus	2009	1897	2009	1905	2009	4
Trichapion simile	2007	1889	2007			3
Stenopterapion tenue	2005	1901	2005	1905	1913	2
Stenopterapion scutellare	2005	1901	2005			2
Ischnopterapion loti	2012	1897	2009	1905	2012	4
Ischnopterapion modestum	2009	1989	2009			3
Ischnopterapion virens	2008	1898	2008	1905	1913	4
Protopirapion atratum	2006	1897	2006	1905	1905	4
Synapion ebeninum	2005	1899	2005			2
Holotrichapion ononis	2005	1898	2005	2000	2000	3
Holotrichapion pisi	1991	1901	1991	1905	1907	2
Holotrichapion aethiops	1995	1899	1995	1905	1905	2
Pirapion immune	2004	1901	2004			2
Cyanapion spencii	2001	1906	2001			2
Cyanapion afer (= platylea)	2000	1901	2000	1905	1905	1
Cyanapion gyllenhali	2000	1898	2000			2
Oxystoma cerdo	2008	1845	2008			2
Oxystoma cracca	2010	1979	2008	2010	2010	2
Oxystoma subulatum	2012	1901	2010	2012	2012	3
Eutrichapion ervi	2010	1898	2010	1905	2003	5
Eutrichapion viciae	2010	1899	2010	1905	2010	5
Eutrichapion punctigerum	2010	1899	2010	1905	1960	4
Nanophyes marmoratus	2010	1911	2005	1971	2010	2
CURCULIONIDAE						
Otiorhynchus arcticus	1991	1991	1991			1
Otiorhynchus atroapterus	2005	1898	2005	1960	1992	3

Species	Cumbria latest year	VC 70 Cumberland		VC 69 Westmorland		Frequency
		first year	last year	first year	last year	
Otiorhynchus desertus	2005	1901	2005	1905	1979	2
Otiorhynchus ligneus	2011	1898	2005	1905	2011	3
Otiorhynchus nodosus	1992	1900	1992	1899	1980	3
Otiorhynchus ovatus	2007	1899	2007	1905	2007	5
Otiorhynchus porcatus	2011	1969	2005	1974	2011	3
Otiorhynchus rugifrons	2006	1901	2006	1905	2002	3
Otiorhynchus rugosostriatus	1998	1835	1998	1996	1996	2
Otiorhynchus singularis	2009	1898	2009	1905	2004	7
Otiorhynchus sulcatus	2008	1898	2008	1905	2002	4
Caenopsis fissirostris	2007	1974	1994	1971	2007	2
Caenopsis waltoni	2005	1876	2005			3
Trachyploeus angustisetulus	1998	1909	1998	?1979	?1979	2
Trachyploeus aristatus	1993	1907	1982	1979	1993	1
Trachyploeus rectus	1982	1978	1982	1979	1979	0
Omiamima mollina	1994	1903	1994			1
Phyllobius argentatus	2009	1897	2009	1905	2006	6
Phyllobius calcaratus	2010	1897	2010	1905	2010	5
Phyllobius maculicornis	2007	1897	2007	1905	2001	3
Phyllobius oblongus	2005	1897	2005	1905	2003	3
Phyllobius pomaceus	2010	1898	2008	1905	2010	5
Phyllobius pyri	2010	1897	2010	1905	2010	7
Phyllobius roboretanus	2010	1899	2010	1905	2010	5
Phyllobius vespertinus	1944	1944	1944			0
Phyllobius viridiaeris	2007	1901	2005	1905	2007	4
Phyllobius viridicollis	2012	1899	2011	1905	2012	4
Polydrusus cervinus	2006	1897	2006	1905	2002	4
Polydrusus pulchellus	2011	1900	1999	1913	2011	3
Polydrusus flavipes	1980	1919	1980			0
Polydrusus mollis	2002	1902	1981	1904	2002	2
Polydrusus pilosus	2007	1965	2002	1999	2007	4
Polydrusus pterygomalis	2008	1897	2008	1905	2008	5
Polydrusus undatus	2008	1899	2008	1905	2003	4
Barypeithes araneiformis	2010	1898	2010	1905	2002	5
Barypeithes pellucidus	2012	1943	2010	1950	2012	4
Barypeithes sulcifrons	2006	1978	1982	2006	2006	1
Sciaphilus asperatus	2010	1897	2010	1905	2002	4
Brachysomus echinatus	1999	1899	1999	1905	1979	2
Strophosoma capitatum	2007	1898	1998	1905	2007	3
Strophosoma faber	1905	1901	1901	1905	1905	0
Strophosoma melanogrammum	2008	1897	2008	1905	2006	6
Strophosoma nebulosum	2008	1901	2007	1905	2008	2
Strophosoma sus	2007	1897	2007	1905	1905	3
Cneorhinus plumbeus	2005	1897	2005	1960	2000	2
Philopodon plagiatu	2005	1897	2005	1975	1992	5
Liophloeus tessulatus	2003	1898	1994	2000	2003	2
Barynotus moerens	2010	1897	2008	1905	2010	3
Barynotus obscurus	2006	1897	2006	1905	1991	4
Barynotus squamosus	2006	1897	2006	1905	1907	3
Tropiphorus obtusus	2000	1903	1994	1905	2000	2
Tropiphorus terricola	1999	1897	1999	1905	1907	2
Tanymecus palliatus	2003	1899	1993	1993	2003	2
Sitona ambiguus	2005	1977	2005	1979	1979	3
Sitona cambricus	2008	1899	2008			3
Sitona griseus	1998	1901	1998	1963	1992	2
Sitona hispidulus	1999	1898	1999	1905	1960	4
Sitona humeralis	1998	1901	1998	1905	1905	2

Species	Cumbria latest year	VC 70 Cumberland		VC 69 Westmorland		Frequency
		first year	last year	first year	last year	
Sitona lepidus	2011	1897	2006	1905	2011	6
Sitona lineatus	2009	1897	2009	1963	2006	4
Sitona lineellus	2006	1905	2006	1979	1981	3
Sitona macularius	1998	1988	1998			2
Sitona ononidis	1998	1901	1998			2
Sitona puncticollis	2010	1899	2000	2010	2010	3
Sitona regensteiniensis	2010	1897	2010	1905	2000	5
Sitona striatellus	2008	1897	2008	1979	2007	4
Sitona sulcifrons	2009	1897	2008	1905	2009	4
Sitona suturalis	2010	1898	2010	1905	2010	6
Cleonus piger	2004	1898	2004	1976	1985	3
Hypera arator	2003	1897	2003	1905	1960	2
Hypera dauci	1996	1909	1996			1
Hypera nigrirostris	2008	1897	2008	1905	1960	3
Hypera ononidis	2012	1909	2002	2012	2012	1
Hypera plantaginis	2011	1897	2006	1905	2011	3
Hypera pollux	1994	1994	1994			1
Hypera postica	2006	1905	2006	1905	1960	2
Hypera punctata	2002	1897	2002	1905	1905	2
Hypera rumicis	2007	1898	2004	1905	2007	3
Hypera suspiciosa	1997	1899	1997	1905	1905	2
Hypera venusta	2003	1899	2003	1905	1905	2
Limobius borealis	1998	1994	1998	1958	1958	2
Cionus scrophulariae	2010	1897	2010	1905	2003	5
Cleopus pulchellus	2005	1898	2005	1905	1995	3
Alophus triguttatus	2006	1897	2006	1905	1978	3
Hylobius abietis	2006	1897	2006	1905	1993	4
Leiosoma deflexum	2010	1898	2010	1905	2007	6
Leiosoma oblongulum	1993	1979	1979	1993	1993	1
Gronops lunatus	1997	1997	1997			1
Pissodes castaneus	2006	2003	2006			2
Pissodes pini	2001	1900	2001			3
Magdalis armigera	1982	1902	1903	1982	1982	0
Magdalis carbonaria	2007	1915	1988	1947	2007	2
Magdalis duplicata	1980	1980	1980			0
Magdalis phlegmatica	2005	1907	1978	2005	2005	1
Magdalis ruficornis	2010	1901	2010	1948	1948	2
Anoplus plantaris	2011	1897	2005	1905	2011	4
Anoplus roboris	1991	1908	1991			1
Euophryum confine	2010	1972	2010	2007	2007	3
Pentarthrum huttoni	1901	1901	1901			0
Mesites tardii	1999	1979	1999	1868	1909	3
Phloeophagus lignarius	1988			1988	1988	1
Sitophilus granarius	1960	1905	1910	1960	1960	0
Sitophilus oryzae	1910	1903	1910	1905	1905	0
Trachodes hispidus	2003	1835	1998	1971	2003	2
Cryptorhynchus lapathi	1987	1899	1987	1905	1905	1
Acalles misellus	1994	1977	1994			2
Acalles ptinoides	2005	1901	2005	1971	1971	3
Acalles roboris	1994	1994	1994	1972	1993	2
Stenopelmus rufinasus	1998	1998	1998			1
Bagous collignensis	1925	1906	1925			0
Bagous limosus	1917	1909	1917			0
Bagous tempestivus	1984	1984	1984			0
Bagous glabrirostris	2007	1835?	2007			1
Bagous lutulentus	1925	1906	1925			0

Species	Cumbria latest year	VC 70 Cumberland		VC 69 Westmorland		Frequency
		first year	last year	first year	last year	
Hydronomus alismatis	1984	1908	1984			0
Dorytomus dejeani	2008	1930	1996	1971	2008	2
Dorytomus filirostris	2008	2008	2008			1
Dorytomus longimanus	1919	1897	1919	1905	1905	0
Dorytomus majalis	1960	1835	1960			0
Dorytomus melanophthalmus	1996	1901	1996	1905	1981	3
Dorytomus rufatus	2012	1899	2000	1905	2012	3
Dorytomus salicinus	1998	1978	1998			1
Dorytomus taeniatus	2010	1897	2009	1905	2010	4
Dorytomus tortrix	1971	1835	1930	1971	1971	0
Dorytomus tremulae	1905	1835	1835	1905	1905	0
Procas granulicollis	1998	1848	1992	1998	1998	2
Notaris acridulus	2008	1897	2008	1905	2008	5
Notaris aethiops	1993	1907	1993			1
Notaris bimaculatus	2005	1898	2005	1905	1981	2
Notaris scirpi	2011	1979	1982	2011	2011	1
Grypus equiseti	2005	1901	2004	1913	2005	3
Orthochaetes insignis	2001	1993	2001			2
Orthochaetes setiger	2012	1907	2012	1905	2012	2
Coeliodes dryados	2007	1897	2005	1905	2007	4
Coeliodes erythroleucos	1975	1975	1975			0
Coeliodes nigratarsis	1991	1986?	1991			2
Coeliodes ruber	1998	1901	1998	1905	1960	2
Coeliodes rubicundus	2010	1899	2010	1904	2007	4
Zacladus geranii	2008	1901	2006	1905	2008	3
Stenocarus umbrinus	1924	1905	1924			0
Micrelus ericae	2009	1897	2009	1905	1980	5
Cidnorhinus quadrimaculatus	20010	1897	2010	1905	2010	6
Trichosirocalus dawsoni	2006	1978	2006	1979	1979	3
Trichosirocalus thalhammeri	1999	1982	1999	1979	1979	2
Trichosirocalus troglodytes	2010	1898	2010	1905	2008	4
Ceutorhynchus alliariae	2010	1905	2010			2
Ceutorhynchus assimilis	2010	1899	2007	1905	2010	4
Ceutorhynchus atomus	2003	1907	2003			2
Ceutorhynchus cochleariae	2004	1907	2004			2
Ceutorhynchus constrictus	1992	1992	1992			1
Ceutorhynchus contractus	2000	1897	2000	1905	2000	3
Ceutorhynchus depressicollis	1907	1904	1907			0
Ceutorhynchus erysimi	2005	1898	2005	1905	1987	3
Ceutorhynchus euphorbiae	1973	1899	1972	1973	1973	0
Ceutorhynchus floralis	2010	1901	2002	1905	2010	4
Ceutorhynchus hirtulus	1987	1979	1987			1
Ceutorhynchus litura	2010	1898	210	1979	2006	4
Ceutorhynchus marginatus	1909	1835	1909			0
Ceutorhynchus mixtus	2008	1984	2008			2
Ceutorhynchus pleurostigma	1987	1901	1987	1905	1905	1
Ceutorhynchus pollinarius	2010	1897	2010	1905	1985	4
Ceutorhynchus pumilio	1995	1907	1995			1
Ceutorhynchus punctiger	2005	1901	2005	1975	1992	3
Ceutorhynchus pyrrhorhynchus	1999	1904	1999	1905	1905	2
Ceutorhynchus quadridens	2011	1899	2011	1905	2007	4
Ceutorhynchus quercicola	1978	1901	1978			0
Ceutorhynchus rapae	1979	1979	1979			0
Ceutorhynchus rugulosus	1999	1928	1999			3
Ceutorhynchus sulcicollis	1901	1901	1901			0
Ceutorhynchus pectoralis	1931	1905	1931	1905	1905	0

Species	Cumbria latest year	VC 70 Cumberland		VC 69 Westmorland		Frequency
		first year	last year	first year	last year	
Ceutorhynchus triangulum	2006	1920	2006			3
Ceutorhynchus viduatus	2008	1911	2008			4
Amalus scortillum	2011			2011	2011	1
Eubrychius velutus	1960	1906	1960			0
Litodactylus leucogaster	1983	1906	1983			0
Rhinoncus bruchoides	2012	1977	1997	1979	2012	2
Rhinoncus castor	2009	1901	2009	1905	1998	3
Rhinoncus inconspicuous	1909	1907	1909			0
Rhinoncus pericarpus	2010	1899	2009	1905	2010	5
Rhinoncus perpendicularis	2007	1907	2007	2004	2004	2
Phytobius canaliculatus	1993	1906	1993	1991	1991	2
Phytobius comari	2006	1904	2006	1905	2001	4
Phytobius muricatus	1907	1904	1907			0
Phytobius quadrituberculatus	2005	1900	2005	1905	2004	3
Phytobius zumpti	2009	1987	1999	1990	2009	3
Phytobius waltoni	1977	1977	1977			0
Amalorrhynchus melanarius	2000	1991	2000	1971	1971	2
Drupenatus nasturtii	1994	1900	1994			1
Poophagus sisymbrii	2003	1900	2003	1905	2003	3
Orobis cyaneus	2012	1907	2012	1905	1979	3
Limnobaris pilistriata	2005	1899	2005	1905	2001	5
Limnobaris t-album	2010	1910	2009	1913	2010	3
Anthonomus bituberculatus	2005	1960	2005	1979	1981	3
Anthonomus brunnipennis	2005	1901	2005	1905	2002	4
Anthonomus conspersus	2010	2010	2010			1
Anthonomus humeralis	1965	1965	1965			0
Anthonomus pedicularis	2010	1897	2010	1905	2008	5
Anthonomus pomorum	2010	1901	2010			1
Anthonomus rubi	2010	1898	2006	1960	2010	4
Anthonomus rufus	1964			1964	1964	0
Anthonomus ulmi	1978	1905	1978	1905	1905	0
Furcipes rectirostris	2010	1979	2010			2
Curculio nucum	1993	1835	1993	1971	1972	1
Curculio pyrrhoceras	2010	1904	2010	1905	2006	4
Curculio salicivorus	2012	1897	2010	1905	2012	4
Curculio villosus	1988	1904	1988	1971	1971	1
Tychius squamulatus	2012	1974	1997	2012	2012	2
Tychius picirostris	2004	1901	2004			3
Sibinia primitus	1998	1998	1998			1
Ellescus bipunctatus	2010	1897	1995	1905	2010	2
Mecinus collaris	2005	1976	2005	1979	1979	2
Mecinus pyraeaster	2010	1897	2008	1905	2010	4
Gymnetron antirrhini	2004	1976	2004			2
Gymnetron labile	2011	1898	2008	1905	2011	3
Gymnetron pasuorum	2012	2012	2012	2007	2008	2
Gymnetron veronicae	2010	1901	1914	1905	2010	1
Orchestes avellanae	1993	1903	1986	1993	1993	2
Orchestes fagi	2010	1897	2010	1905	2010	6
Orchestes pilosus	1980	1905	1980	1905	1905	0
Orchestes quercus	1998	1898	1998	1905	1998	2
Orchestes rusci	2010	1898	2004	1905	2010	4
Tachyerges pseudostigma	1916	1901	1916			0
Tachyerges salicis	2008	1898	2008	1905	2006	3
Tachyerges stigma	2010	1897	2010	1913	2007	3
Isochnus foliorum	1980	1897	1980	1905	1960	0
Rhamphus oxyacanthae	2010	1901	2010	1993	1993	4

Species	Cumbria latest year	VC 70 Cumberland		VC 69 Westmorland		Frequency
		first year	last year	first year	last year	
Rhamphus pulicarius	2010	1901	2010	1905	2001	4
SCOLYTIDAE						
Scolytus intricatus	2012	1942	2009	1971	2012	3
Scolytus mali	2005	2005	2005			1
Scolytus ratzeburgi	2006	1993	2003	1997	2006	3
Scolytus scolytus	1999	1899	1999	1905	1905	2
Hylesinus crenatus	2010	1900	2000	1905	2010	2
Leperisinus varius	2008	1901	2008	1905	2006	3
Acrantus vittatus	1900	1900	1900			0
Hylastinus obscurus	2006	1903	2006			1
Phloeophthorus rhododactylus	2007	1903	2007	1905	1905	2
Hylurgops palliatus	2008	1901	2008	1905	2002	3
(Hylastes ater ?)	1988	1899	1988	1988	1988	2
Hylastes brunneus	1996	1899	1996	1905	1996	1
Hylastes cunicularius	1992	1992	1992			1
Hylastes opacus	1942	1942	1942			0
Tomicus piniperda	2008	1898	2007	1905	2008	3
Dryocoetes alni	1924	1924	1924			0
Dryocoetes villosus	2006	1916	1991	1989	2006	3
Dryocoetes autographus	2010	1921	2010	2008	2008	3
Trypodendron domesticum	2011	1898	2011	1963	2011	3
Trypodendron lineatum	2003	1902	2003			2
Trypodendron signatum	2008	1985	2008	1964	2006	2
Pityogenes bidentatus	1993	1900	1943	1905	1993	1
Pityogenes chalcographus	1921	1921	1921			0
Ips acuminatus	2009	1910	2009			1
Ips typographus	1921	1921	1921			0
PLATYPODIDAE						
Platypus cylindricus	2007			2007	2007	1